



**Shernolds, Maidstone, ME15 9QG**  
**Guide Price £425,000**





\*\*\*NO FORWARD CHAIN\*\*\*GUIDE PRICE £425,000 - £450,000 THREE BEDROOM SEMI-DETACHED PROPERTY WITH A PRIVATE REAR GARDEN IN THE SOUGHT AFTER VILLAGE OF LOOSE WITHIN WALKING DISTANCE OF POPULAR PRIMARY SCHOOLS AND LOCAL AMENITIES INCLUDING SAINSBURYS LOCAL.

This semi-detached family home sits in a quiet residential location in the sought after village of Loose served with excellent local amenities including a Sainsburys Local, popular OFSTED 'Outstanding' Primary school and the Loose Conservation Area offering picturesque walking routes. Maidstone is a 2 mile distance offering a wide range of shops, restaurants and social facilities. For the commuter, Staplehurst and Marden Station are a short drive providing a frequent service to London Charing Cross, Bridge and Waterloo. The property sits on a generous plot with off road parking to the front and a private rear garden. Inside, on the ground floor, there is an entrance hall, lounge, kitchen/dining room, useful utility room and downstairs bathroom, ground floor bedroom and family room/potential forth bedroom. The utility room is of ample size and connects the garage internally giving opportunity to extend further into the space. On the first floor, there are two further good sized double bedrooms along with eaves storage and a WC completes the upstairs. This family home will generate plenty of interest so do not delay and call Page and Wells Loose Office today and book your viewing to avoid missing out.



## GROUND FLOOR

### Entrance Hall

Lounge 17'3" x 11'2" (5.26m x 3.42m)

Kitchen/Dining Room 20'10" x 9'3" (6.37m x 2.82m)

Family Room 11'0" x 8'1" (3.36m x 2.47m)

Utility 20'10" x 9'3" (6.37m x 2.82m)

Bedroom 3 12'11" x 11'2" (3.94m x 3.42m)

### Bathroom

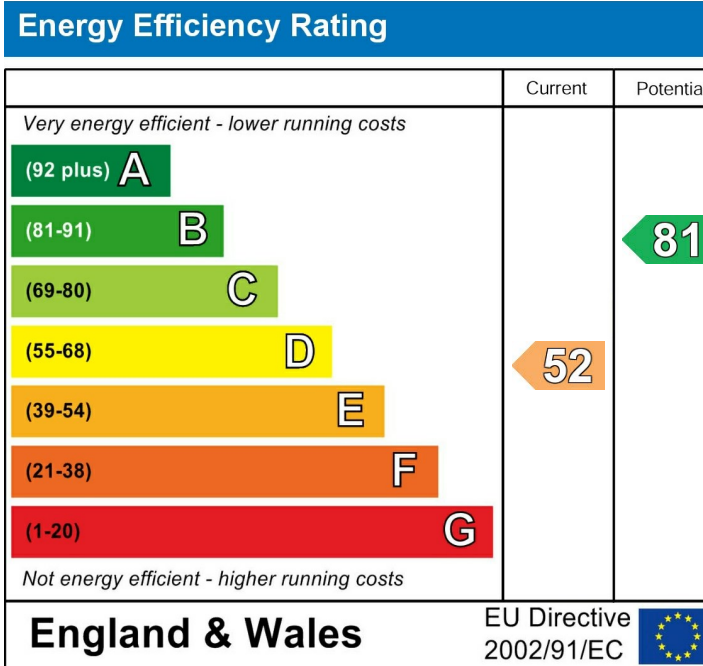
## FIRST FLOOR

Bedroom 1 15'8" x 14'6" (4.78m x 4.42m)

Bedroom 2 14'6" x 10'4" (4.42m x 3.17m)

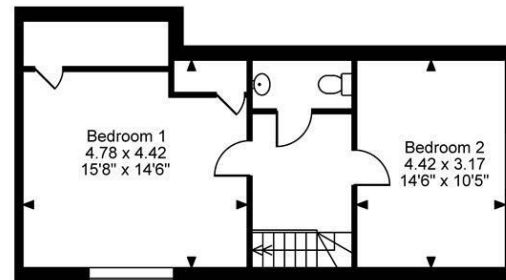
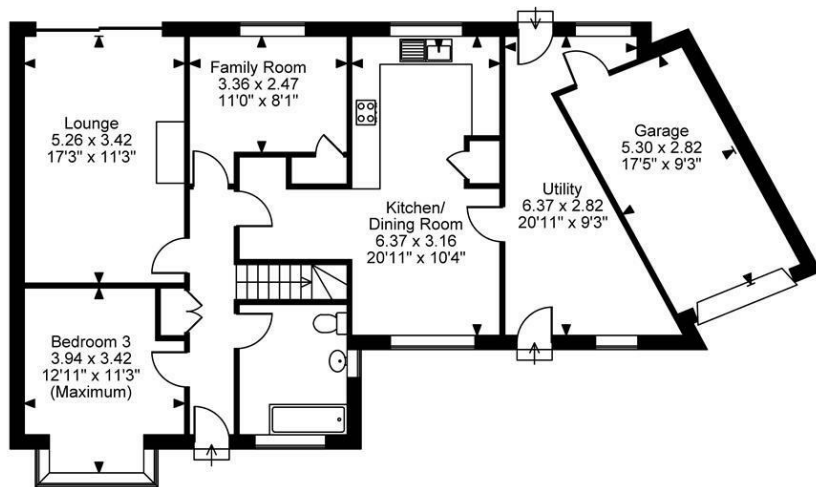
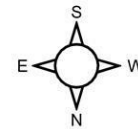
## EXTERNALLY

Garage 17'4" x 9'3" (5.30m x 2.82m)





**Shernolds, Maidstone, Kent**  
**Approximate Gross Internal Area**  
**1722 Sq Ft/160 Sq M**



**First Floor**

**Ground Floor**

**FOR ILLUSTRATIVE PURPOSES ONLY - NOT TO SCALE**

The position & size of doors, windows, appliances and other features are approximate only.  
 © ehouse. Unauthorised reproduction prohibited. Drawing ref. dig/8628686/TOW

