



Beech Court Gardens, Loose, Maidstone, Kent, ME15 6AJ
Offers In Excess Of £535,000



IMMACULATE FOUR-BEDROOM DETACHED HOUSE IN SOUGHT-AFTER DEVELOPMENT WITH BEAUTIFUL OPEN-PLAN KITCHEN/DINER AND TWO ENSUITE BATHROOMS

This fabulous four-bedroom home is located in a highly sought-after development within walking distance of local amenities, including a convenient Sainsbury's Local. For education, several excellent options, including reputable grammar schools, are easily accessible.

The home offers spacious accommodation across two floors. Inside, there is a front lounge featuring a cosy log burner, alongside a stunning open-plan kitchen/diner with a kitchen island and larder cupboards. The kitchen flows seamlessly into the dining area, which opens onto the garden patio through bi-folding doors. Upstairs, you'll find four generously sized double bedrooms and a family bathroom. Both the main bedroom and bedroom two benefit from ensuite bathrooms.

Outside, there is a driveway for off-road parking and a convenient garage. The beautifully landscaped rear garden, completed by the current owner, features a patio seating area with a pergola, a lawn area, and raised borders.

Viewing is highly recommended. Call Page and Wells today to arrange your viewing and avoid missing out!



GROUND FLOOR

Entrance Hall

Lounge 20'4" x 11'6" (6.22m x 3.51m)

Kitchen/Dining Area 21'6" x 18'6" (6.57m x 5.65m)

FIRST FLOOR

Landing

Bedroom 1 14'7" x 11'0" (4.47m x 3.36m)

En-Suite

Bedroom 2 13'4" x 10'5" (4.07m x 3.18m)

En-Suite

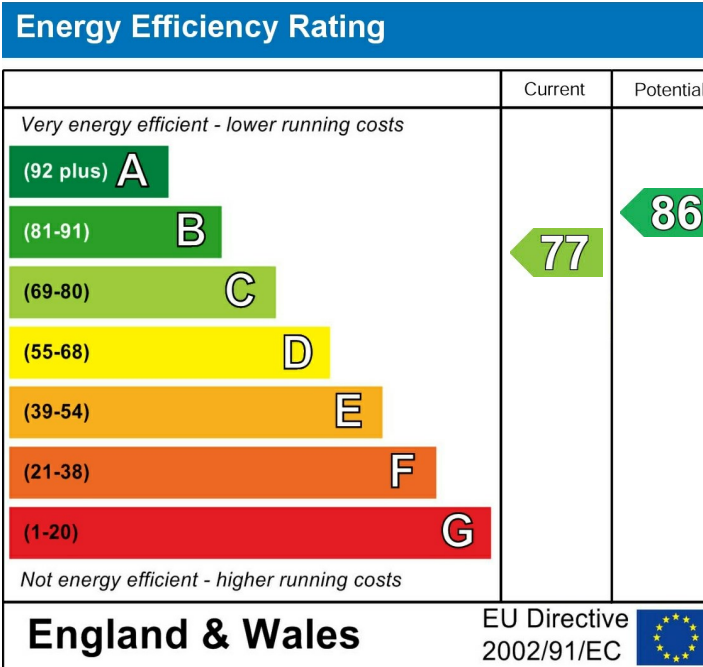
Bedroom 3 11'0" x 10'6" (3.36m x 3.21m)

Bedroom 4 10'2" x 7'0" (3.12m x 2.15m)

Family Bathroom

EXTERNALLY

Garage 17'10" x 10'0" (5.45m x 3.07m)



Page & Wells limited for themselves and for the vendors of this property whose agents they are give notice that: 1. These particulars do not constitute any part of, an offer or a contract. 2. All statements contained in these particulars as to this property are made without responsibility on the part of Page & Wells Limited or the Vendor. 3. None of the statements contained in these particulars as to the property is to be relied on as statements or representations of fact. 4. Any intending purchaser must satisfy himself by inspection or otherwise as to the correctness of each of the statements contained in these particulars. 5. The vendor does not make or give, and neither Page & Wells Limited nor any person in their employment has any authority to make or give any representation whatsoever in relation to this property. These particulars are supplied on the understanding that all negotiations are carried out throughout Page & Wells Limited. Properties with a reference prefixes EAA are those which Page & Wells Limited disclose an interest in accordance with the provisions of the Estates Agents Act 1979

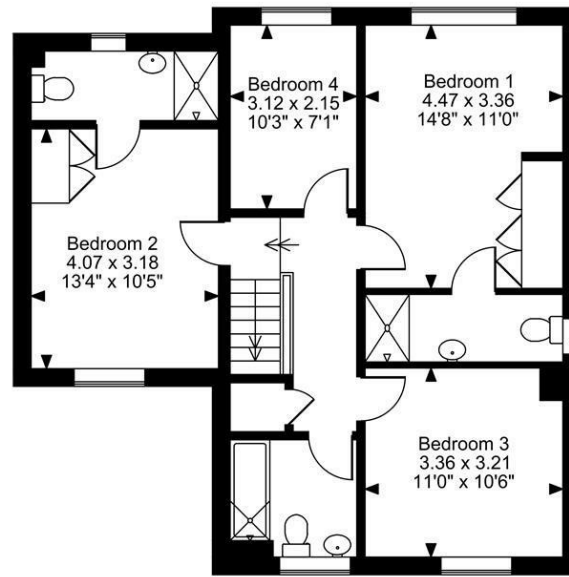
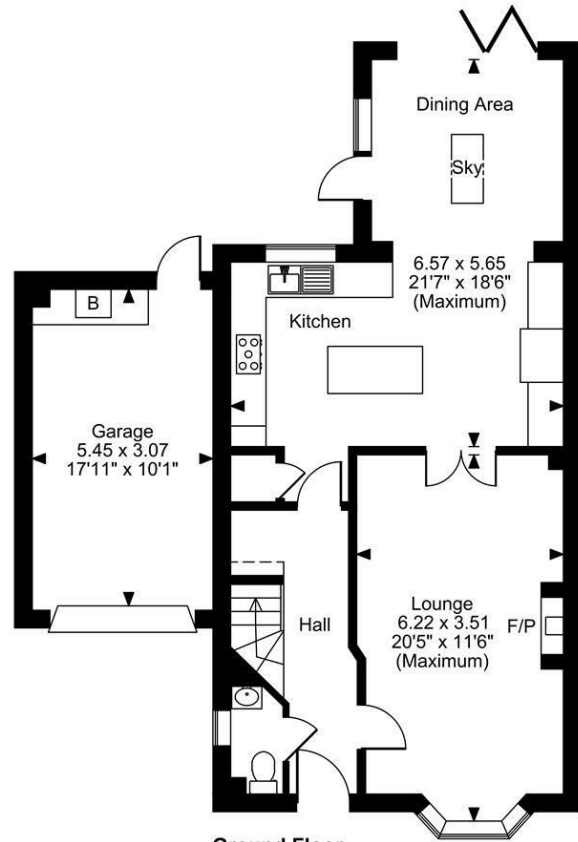
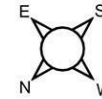
Beech Court Gardens, Maidstone, Kent

Approximate Gross Internal Area

Main House = 1410 Sq Ft/131 Sq M

Garage = 180 Sq Ft/17 Sq M

Total = 1590 Sq Ft/148 Sq M



Ground Floor

First Floor

FOR ILLUSTRATIVE PURPOSES ONLY - NOT TO SCALE

The position & size of doors, windows, appliances and other features are approximate only.

□ □ □ □ Denotes restricted head height

© ehouse. Unauthorised reproduction prohibited. Drawing ref. dig/8627645/SS

