



1 Victory Terrace North Street, Sutton Valence, Maidstone, ME17 3HU
Guide Price £325,000 to £350,000

GUIDE PRICE £325,000 TO £350,000CHARMING TWO BEDROOM COTTAGE WITH DRIVEWAY, GARAGE AND BEAUTIFUL GARDENS

Nestled in the highly sought-after village of Sutton Valence, this delightful character cottage sits in an excellent position while being just a short walk from local amenities. With easy access to the popular Sutton Valence Schools and a selection of charming pubs, it's also only 6 miles from Maidstone Town Centre, offering a wide variety of shopping, social, and educational facilities. Commuters will appreciate the convenience of Headcorn Station, just a short drive away, with frequent mainline services to London.

This charming home is full of character, featuring a welcoming entrance porch, a cosy lounge with a multi-fuel stove set into a feature fireplace, and a dining room. The fitted kitchen offers a lovely view of the cottage garden from the sink. Upstairs, there are two bedrooms, both with fitted wardrobes, and a spacious bathroom complete with a bath, vanity unit, and ample storage.

Outside, the property benefits from excellent parking facilities, with a driveway leading to a detached garage. The cottage garden stretches approximately 150ft and filled with a variety of mature shrubs and plants.

Don't miss the chance to view this fantastic character home—book your appointment today!



GROUND FLOOR

Lounge 16'8" x 10'1" (5.10m x 3.08m)

Dining Room 10'2" x 10'2" (3.10m x 3.10m)

Kitchen 10'2" x 6'2" (3.10m x 1.90m)

FIRST FLOOR

Bedroom 1 16'8" x 10'1" (5.10m x 3.08m)

Bedroom 2 10'2" x 10'2" (3.10m x 3.10m)

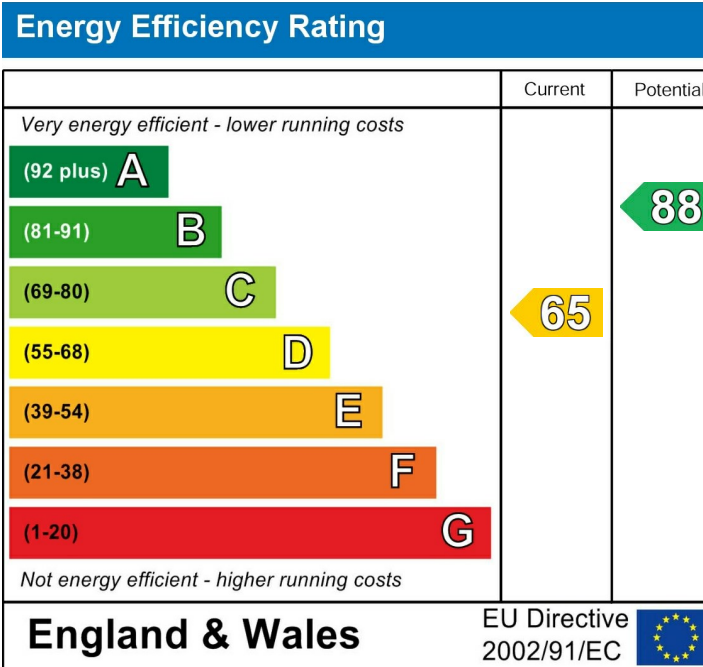
Bathroom

EXTERNALLY

Garage 18'6" x 9'0" (5.66m x 2.75m)

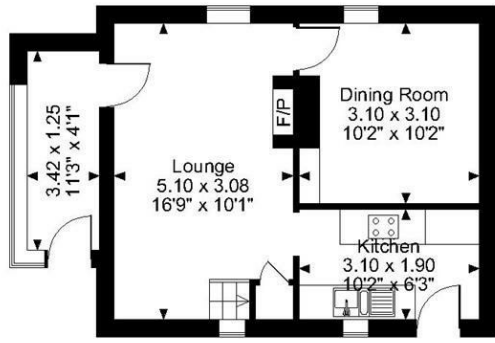
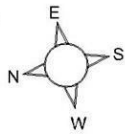
Shed 9'10" x 7'8" (3.00m x 2.36m)

Shed 6'10" x 4'8" (2.10m x 1.43m)

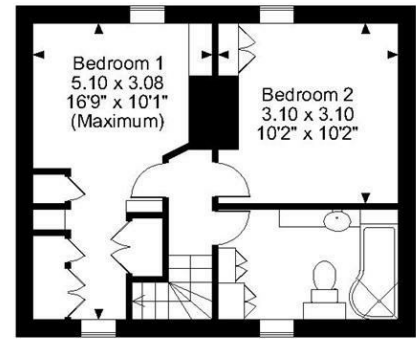


Page & Wells limited for themselves and for the vendors of this property whose agents they are give notice that: 1. These particulars do not constitute any part of, an offer or a contract. 2. All statements contained in these particulars as to this property are made without responsibility on the part of Page & Wells Limited or the Vendor. 3. None of the statements contained in these particulars as to the property is to be relied on as statements or representations of fact. 4. Any intending purchaser must satisfy himself by inspection or otherwise as to the correctness of each of the statements contained in these particulars. 5. The vendor does not make or give, and neither Page & Wells Limited nor any person in their employment has any authority to make or give any representation whatsoever in relation to this property. These particulars are supplied on the understanding that all negotiations are carried out throughout Page & Wells Limited. Properties with a reference prefixes EAA are those which Page & Wells Limited disclose an interest in accordance with the provisions of the Estates Agents Act 1979

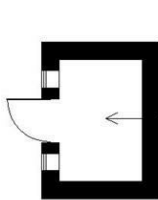
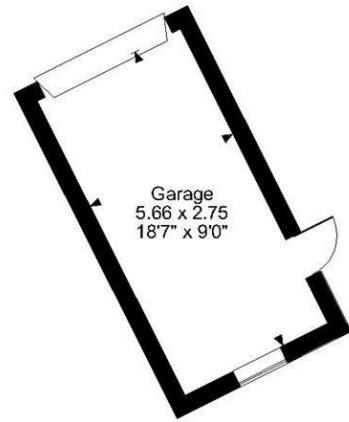
Victory Terrace, North Street, Sutton Valence, Maidstone
Approximate Gross Internal Area
Main House = 739 Sq Ft/69 Sq M
Garage = 168 Sq Ft/16 Sq M
Sheds = 108 Sq Ft/10 Sq M
Total = 1015 Sq Ft/95 Sq M



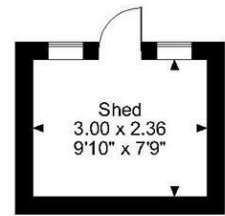
Ground Floor



First Floor



Shed
2.10 x 1.43
6'11" x 4'8"



Shed
3.00 x 2.36
9'10" x 7'9"

FOR ILLUSTRATIVE PURPOSES ONLY - NOT TO SCALE

The position & size of doors, windows, appliances and other features are approximate only.
 © ehouse. Unauthorised reproduction prohibited. Drawing ref. dig/8615517/LCO

