



Florida Goudhurst Road, Marden, Tonbridge, TN12 9JE
Price £550,000



NO FORWARD CHAINEXTENDED PERIOD HOME SITUATED IN THE SOUGHT AFTER VILLAGE OF MARDEN WITHIN WALKING DISTANCE OF LOCAL AMENITIES AND MARDEN STATION OFFERING MAINLINE SERVICES TO LONDON.

Situated within walking distance of local amenities and Marden Station, this exceptional period home offers spacious and versatile accommodation over two floors. The entrance porch leads into a welcoming hall. To the front, there is a lounge featuring a bay window and a charming fireplace. The adjacent dining room opens to a bright conservatory. The extended kitchen impresses with generous space and well fitted kitchen units. A useful shower room completes the ground floor accommodation.

The first floor comprises three sizeable double bedrooms, each with their own appeal, and a family bathroom. Outside, the driveway to the front provides ample off road parking and leads to a detached garage. The well-maintained rear garden features lush lawns, handy sheds, and well-stocked borders.

Located in the picturesque village of Marden, this excellent property is close to a range of local amenities, including a post office, pharmacy, pubs, and popular schools. Marden Station, just a short walk away, provides frequent mainline services to London Waterloo East, London Bridge, and London Charing Cross.

Homes of this style and in this convenient location are rarely available. Contact Page and Wells Estate Agents to book your viewing and avoid missing out.



ON THE GROUND FLOOR

Enclosed Entrance Porch

Entrance hall

Lounge 15'9 x 13'4 (4.80m x 4.06m)

Dining Room 12 x 11'3 (3.66m x 3.43m)

Kitchen 21'6 x 11 (6.55m x 3.35m)

Shower/Utility Room

Conservatory 14'11 x 6'1 (4.55m x 1.85m)

ON THE FIRST FLOOR

Landing

Bedroom 1 17'9 x 13'1 (5.41m x 3.99m)

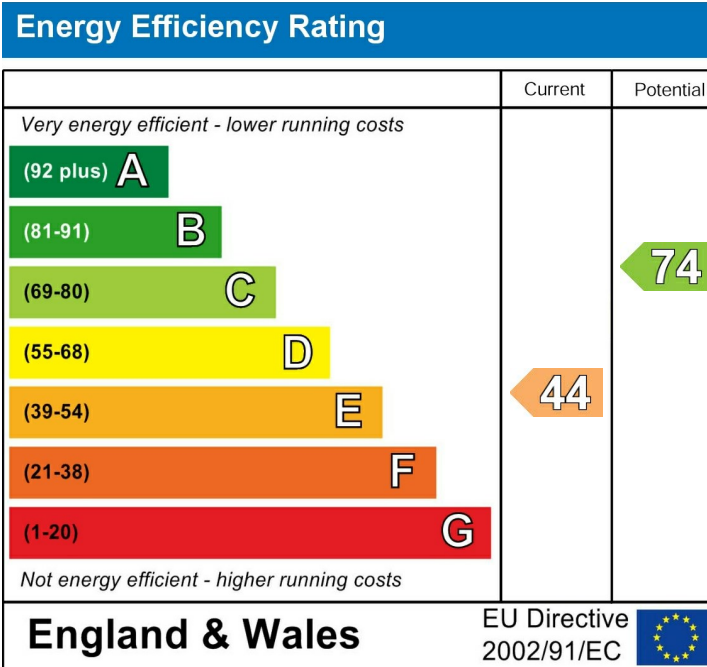
Bedroom 2 14 x 10'8 (4.27m x 3.25m)

Bedroom 3 12 x 11'3 (3.66m x 3.43m)

Bathroom

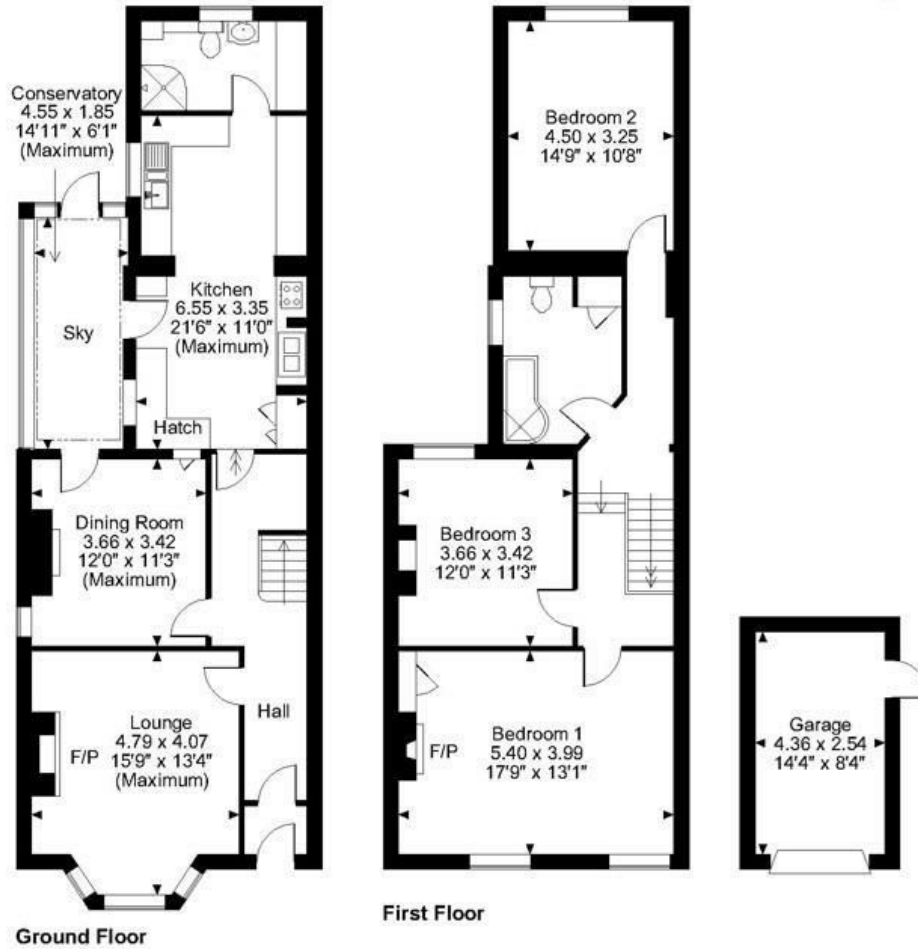
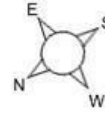
EXTERNALLY

Garage 14'4 x 8'4 (4.37m x 2.54m)



Page & Wells limited for themselves and for the vendors of this property whose agents they are give notice that: 1. These particulars do not constitute any part of, an offer or a contract. 2. All statements contained in these particulars as to this property are made without responsibility on the part of Page & Wells Limited or the Vendor. 3. None of the statements contained in these particulars as to the property is to be relied on as statements or representations of fact. 4. Any intending purchaser must satisfy himself by inspection or otherwise as to the correctness of each of the statements contained in these particulars. 5. The vendor does not make or give, and neither Page & Wells Limited nor any person in their employment has any authority to make or give any representation whatsoever in relation to this property. These particulars are supplied on the understanding that all negotiations are carried out throughout Page & Wells Limited. Properties with a reference prefixes EAA are those which Page & Wells Limited disclose an interest in accordance with the provisions of the Estates Agents Act 1979

Florida, Goudhurst Road Marden, Tonbridge, Kent
 Approximate Gross Internal Area
 Main House = 1621 Sq Ft/151 Sq M
 Garage = 119 Sq Ft/11 Sq M
 Total = 1740 Sq Ft/162 Sq M



FOR ILLUSTRATIVE PURPOSES ONLY - NOT TO SCALE

The position & size of doors, windows, appliances and other features are approximate only.
 © ehouse. Unauthorised reproduction prohibited. Drawing ref. dig/8610631/SLU

