



**Fairview Heath Road, Linton, Maidstone, ME17 4NU**  
**Offers In Excess Of £400,000**





**FOUR BEDROOM SEMI DETACHED HOME WITH A STUNNING SOUTH FACING GARDEN IN SOUGHT AFTER LINTON VILLAGE.**

this exceptional family home IS located in the popular Linton village, within walking distance of local schools and amenities, including the Bull Inn Pub and scenic walks through Greensand Way. The neighbouring village of Coxheath offers a wide range of conveniences such as Tesco Express, Post Office, and Londis. For commuters, Staplehurst and Marden Stations are just a short drive away, providing frequent mainline services to London Bridge, London Waterloo East, and London Charing Cross.

This turn-key home has been meticulously renovated and maintained by the current owner, offering spacious accommodation throughout. The ground floor features an entrance hall leading to a beautiful kitchen/dining room, which seamlessly connects to the lounge with French doors opening onto the garden patio. A conservatory adds to the charm and utility of the ground floor.

Upstairs, there are four generously sized bedrooms, with the main bedroom boasting double aspect windows that offer stunning views of the surrounding orchards. The first floor is completed by a family bathroom featuring both a freestanding bath and a separate shower unit.

Outside, the property offers off-road parking with a driveway at the front and a garage. The mature south-facing garden at the rear is a true highlight, showcasing a variety of beautiful plants, trees, and well-stocked borders. This fabulous family home is expected to generate significant interest. Contact Page and Wells Loose Office today to book your viewing and avoid missing out.



**GROUND FLOOR**

**Entrance Hall**

**Lounge 16'9" x 12'8" (5.11m x 3.87m)**

**Kitchen/Breakfast Room 22'8" x 8'11" (6.92m x 2.74m)**

**Conservatory 17'4" x 8'4" (5.29m x 2.55m)**

**FIRST FLOOR**

**Bedroom 1 15'1" x 9'0" (4.60m x 2.76m)**

**Bedroom 2 10'2" x 8'7" (3.11m x 2.64m)**

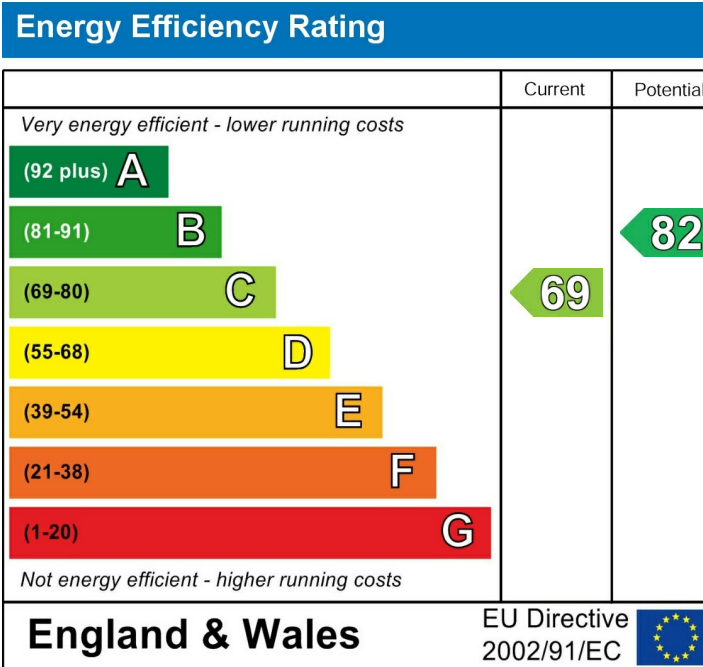
**Bedroom 3 10'6" x 7'8" (3.21m x 2.35m)**

**Bedroom 4 10'6" x 7'7" (3.21m x 2.32m)**

**Family Bathroom**

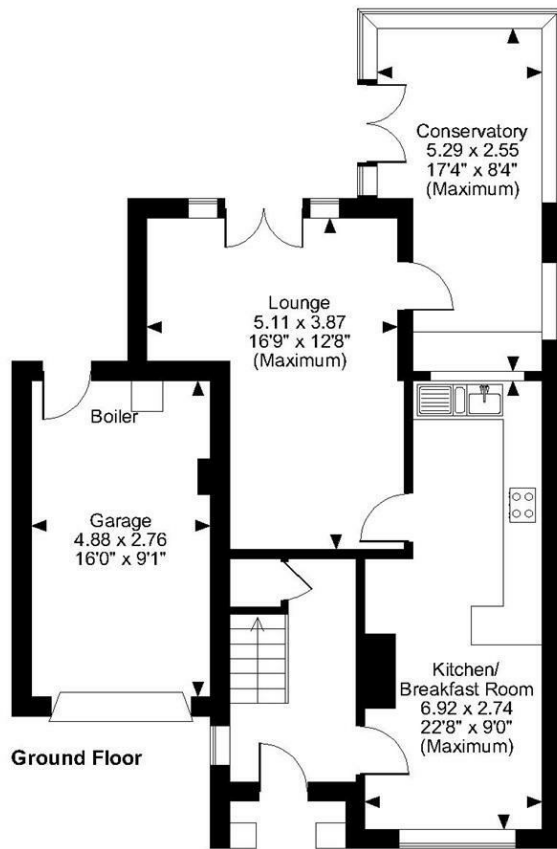
**EXTERNALLY**

**Garage 16'0" x 9'0" (4.88m x 2.76m)**



Page & Wells limited for themselves and for the vendors of this property whose agents they are give notice that: 1. These particulars do not constitute any part of, an offer or a contract. 2. All statements contained in these particulars as to this property are made without responsibility on the part of Page & Wells Limited or the Vendor. 3. None of the statements contained in these particulars as to the property is to be relied on as statements or representations of fact. 4. Any intending purchaser must satisfy himself by inspection or otherwise as to the correctness of each of the statements contained in these particulars. 5. The vendor does not make or give, and neither Page & Wells Limited nor any person in their employment has any authority to make or give any representation whatsoever in relation to this property. These particulars are supplied on the understanding that all negotiations are carried out throughout Page & Wells Limited. Properties with a reference prefixes EAA are those which Page & Wells Limited disclose an interest in accordance with the provisions of the Estates Agents Act 1979





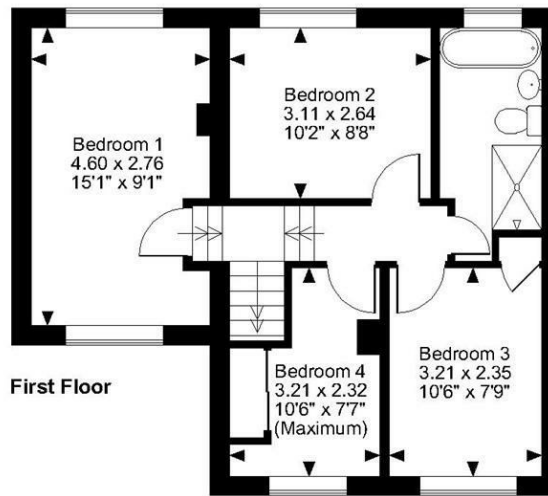
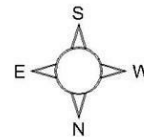
**Fairview, HeathRoad Linton, Maidstone, Kent**

Approximate Gross Internal Area

Main House = 1083 Sq Ft/101 Sq M

Garage = 145 Sq Ft/13 Sq M

Total = 1228 Sq Ft/114 Sq M



**FOR ILLUSTRATIVE PURPOSES ONLY - NOT TO SCALE**

The position & size of doors, windows, appliances and other features are approximate only.

© ehouse. Unauthorised reproduction prohibited. Drawing ref. dig/8610849/SS

