



**4 Oaklands, Maidstone, Kent, ME15 6SD**  
**Offers In Excess Of £600,000**





**\*\*\*NO FORWARD CHAIN\*\*\*STUNNING SPACIOUS 4/5 BEDROOM DETACHED FAMILY HOME SITUATED IN A SOUGHT AFTER CUL DE SAC WITHIN WALKING DISTANCE OF POPULAR SCHOOL**

Nestled in a peaceful location, this exceptional well presented four/five-bedroom family home has been impeccably maintained and set over three floors. Inside, there is a light and airy entrance hallway, a ground floor bedroom with fitted wardrobes, cloakroom, kitchen/diner, and lounge. The lounge seamlessly extends into the landscaped rear garden, an ideal spot for soaking up the sun and relaxing with family and friends. The extended kitchen is equipped with two Neff Slide&Hide ovens, an induction hob with an integrated downdraft extractor fan, a dishwasher, and space for an American fridge freezer. Additional features include a breakfast bar, a Velux window with a remote-operated blind, extra storage and work space, space for a dining table, and a personal door to the side.

The first floor comprises three generously sized bedrooms and a family bathroom. The second floor offers a private and spacious main bedroom with built-in wardrobes, and an en suite shower room enhanced by a Velux window to the rear. Externally, the property includes a garage with an electric remote control door at the front and an up-and-over door at the back, plus driveway parking in front of the garage. The rear garden offers a low maintenance retreat large patio area, artificial lawn, various raised borders, and a diverse array of established shrubs and plants.

This fabulous home is conveniently close to local amenities including Sainsbury's Local, excellent schools and Maidstone Town Centre providing high speed mainline services to London and a wide range of shopping, dining and entertainment options. Do not miss your opportunity to own this fantastic family home. Contact Page and Wells Loose Office today and book your viewing!



**GROUND FLOOR**

Entrance Hall

Lounge 16'8" x 13'7" (5.09m x 4.16m)

Bedroom 4 13'10 x 11'2 (4.22m x 3.40m)

Kitchen/Diner 25'6" x 10'11" (7.77m x 3.33m)

Dining Room 13'0" x 11'1" (3.97m x 3.40m)

**FIRST FLOOR**

Bedroom 2 14'2" x 12'7" (4.32m x 3.85m)

Bedroom 3 12'7" x 9'6" (3.85m x 2.91m)

Study/Bedroom 5 11'0" x 6'11" (3.36m x 2.11m)

Family Bathroom

**SECOND FLOOR**

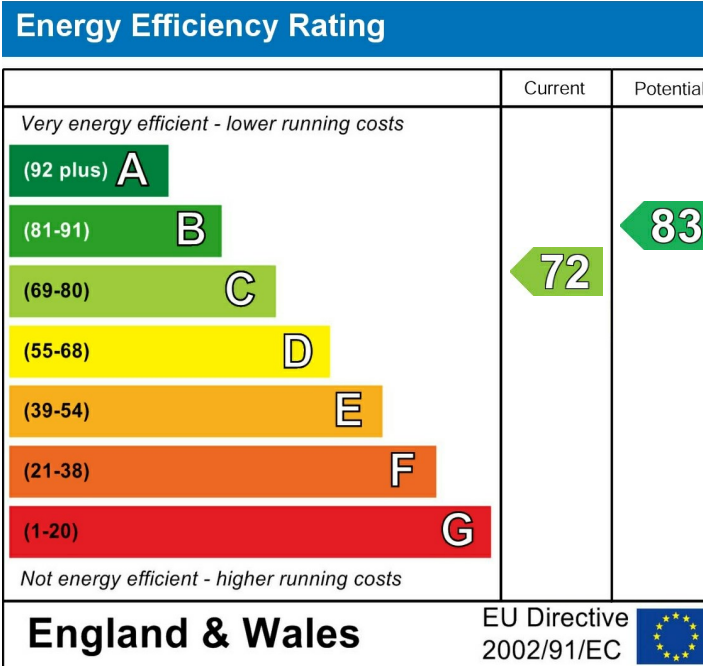
Bedroom 1 15'1" x 14'2" (4.60m x 4.32m)

En-Suite

**EXTERNALLY**

Garage 17'11" x 8'7" (5.48m x 2.62m)

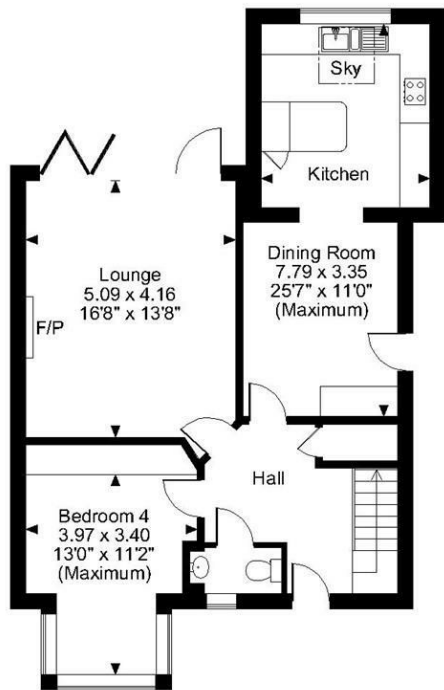
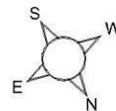
Shed 9'10" x 5'10" (3.00m x 1.80m)



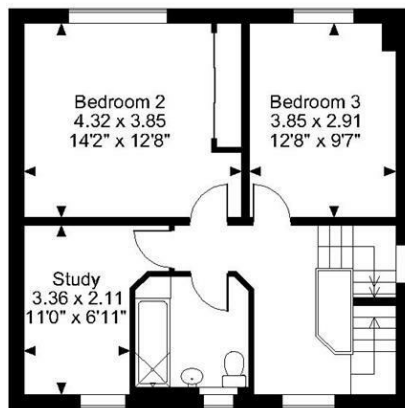
Page & Wells limited for themselves and for the vendors of this property whose agents they are give notice that: 1. These particulars do not constitute any part of, an offer or a contract. 2. All statements contained in these particulars as to this property are made without responsibility on the part of Page & Wells Limited or the Vendor. 3. None of the statements contained in these particulars as to the property is to be relied on as statements or representations of fact. 4. Any intending purchaser must satisfy himself by inspection or otherwise as to the correctness of each of the statements contained in these particulars. 5. The vendor does not make or give, and neither Page & Wells Limited nor any person in their employment has any authority to make or give any representation whatsoever in relation to this property. These particulars are supplied on the understanding that all negotiations are carried out throughout Page & Wells Limited. Properties with a reference prefixes EAA are those which Page & Wells Limited disclose an interest in accordance with the provisions of the Estates Agents Act 1979



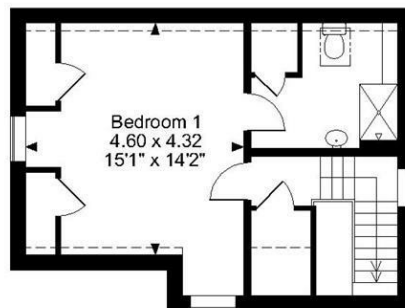
**Oaklands, Maidstone, Kent**  
**Approximate Gross Internal Area**  
**Main House = 1716 Sq Ft/159 Sq M**  
**Garage = 155 Sq Ft/14 Sq M**  
**Outbuilding = 58 Sq Ft/5 Sq M**  
**Total = 1929 Sq Ft/178 Sq M**



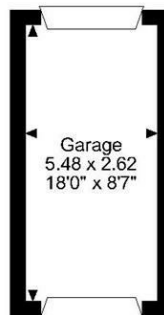
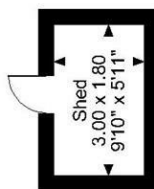
**Ground Floor**



**First Floor**



**Second Floor**



**FOR ILLUSTRATIVE PURPOSES ONLY - NOT TO SCALE**  
 The position & size of doors, windows, appliances and other features are approximate only.  
 ☐ Denotes restricted head height  
 © ehouse. Unauthorised reproduction prohibited. Drawing ref. dig/8602265/LCO

