



**Winfield Vanity Lane, Linton, Maidstone, Kent, ME17 4NX**  
**Offers In Excess Of £575,000**



**IMMACULATE ONE OFF 4 BEDROOM PROPERTY IN SOUGHT-AFTER VILLAGE OF LINTON**

Presenting an exceptional family home in the desirable village of Linton, thoughtfully upgraded by the current owners to provide superior accommodation with a wrap-around garden.

The property features a spacious entrance hall leading to a beautiful lounge with a feature log burner and French doors opening onto the south-facing section of the garden. Additionally, there is a fourth bedroom that could serve as a study if required. The heart of the home is the immaculate kitchen/diner, which has been upgraded to include a double oven, induction hob with integrated extractor fan, quartz surfaces, and a breakfast bar. The dining room extends into a seating area that offers lovely views of the garden. A useful utility room with access to the integral garage and cloakroom complete the ground floor.

Upstairs, there are three bedrooms, with the main bedroom benefitting from high-end fitted wardrobes and a recently upgraded ensuite with bath and separate shower facilities. The recently updated family bathroom features part-tiled walls, a vanity unit, and ample storage space.

Outside, the electric gated driveway, with block paving, provides ample off-road parking. The thoughtfully landscaped garden wraps around the property, offering several seating areas, lawns, and well-stocked borders.

This home is ideally located for the amenities of both Linton and Coxheath, including picturesque walks, country pubs, popular primary and secondary schools, and a newly built doctor's surgery. For commuters, nearby Marden and Staplehurst Stations offer frequent mainline services to London.

Viewing is highly recommended. Contact Page and Wells Loose Office today to book your viewing and avoid missing out



**GROUND FLOOR**

**Entrance Hall**

**Lounge 17'11" x 12'2" (5.47m x 3.72m)**

**Kitchen/Dining Room 28'6" x 12'8" (8.69m x 3.87m)**

**Conservatory 10'7" x 9'5" (3.23m x 2.89m)**

**Study/Bedroom 4 11'8" x 10'3", (3.57m x 3.13,)**

**Utility Room 12'8" x 7'9" (3.87m x 2.37m)**

**FIRST FLOOR**

**Landing**

**Bedroom 1 24'8" x 19'8" (7.53m x 6.00m)**

**En-Suite**

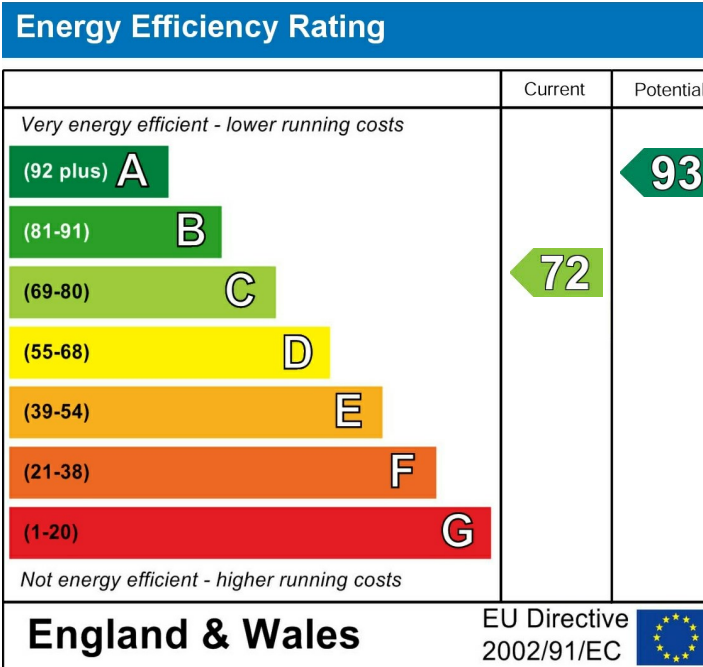
**Bedroom 2 12'9" x 11'5" (3.91m x 3.50m)**

**Bedroom 3 9'4" x 9'1" (2.87m x 2.79m)**

**Family Bathroom**

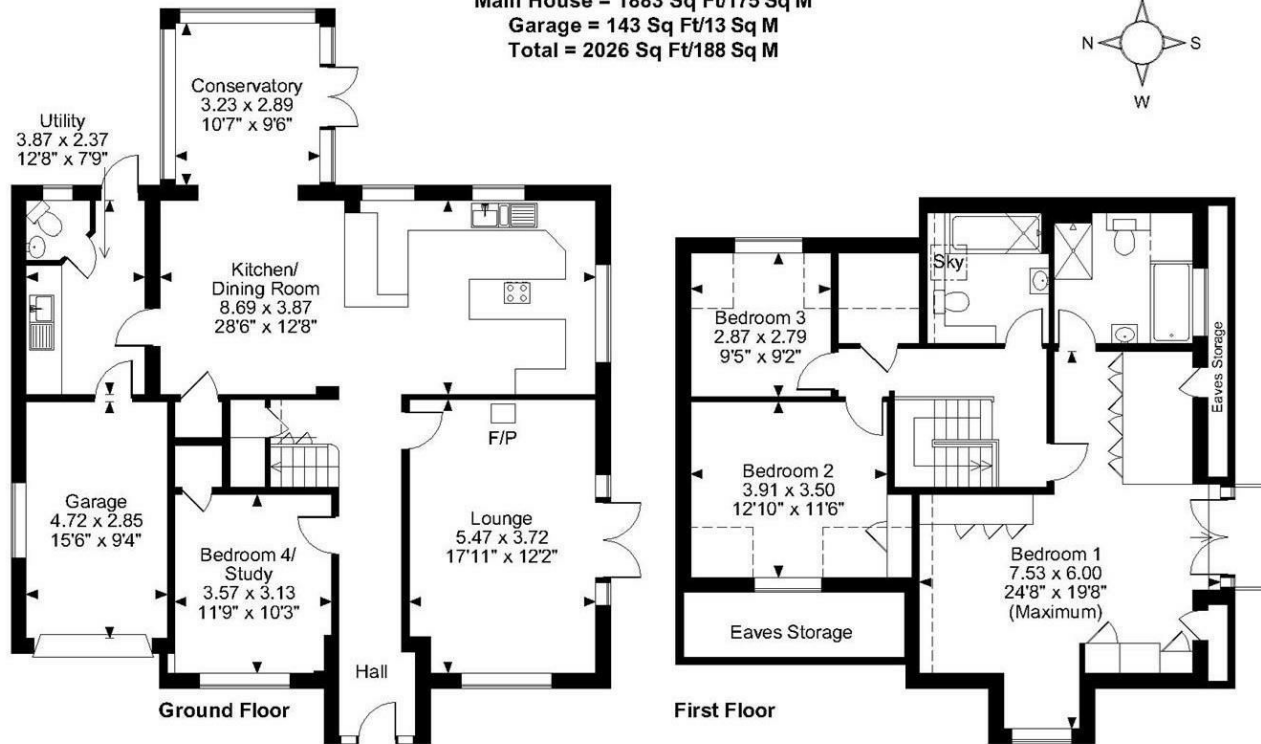
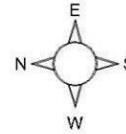
**EXTERNALLY**

**Garage 15'5" x 9'4" (4.72m x 2.85m)**



Page & Wells limited for themselves and for the vendors of this property whose agents they are give notice that: 1. These particulars do not constitute any part of, an offer or a contract. 2. All statements contained in these particulars as to this property are made without responsibility on the part of Page & Wells Limited or the Vendor. 3. None of the statements contained in these particulars as to the property is to be relied on as statements or representations of fact. 4. Any intending purchaser must satisfy himself by inspection or otherwise as to the correctness of each of the statements contained in these particulars. 5. The vendor does not make or give, and neither Page & Wells Limited nor any person in their employment has any authority to make or give any representation whatsoever in relation to this property. These particulars are supplied on the understanding that all negotiations are carried out throughout Page & Wells Limited. Properties with a reference prefixes EAA are those which Page & Wells Limited disclose an interest in accordance with the provisions of the Estates Agents Act 1979

Winfield, Vanity Lane, Linton, Maidstone, Kent  
 Approximate Gross Internal Area  
 Main House = 1883 Sq Ft/175 Sq M  
 Garage = 143 Sq Ft/13 Sq M  
 Total = 2026 Sq Ft/188 Sq M



**FOR ILLUSTRATIVE PURPOSES ONLY - NOT TO SCALE**

The position & size of doors, windows, appliances and other features are approximate only.

□ □ □ □ Denotes restricted head height

© ehouse. Unauthorised reproduction prohibited. Drawing ref. dig/8602849/LCO

