



The Tatt High Street, Yalding, Maidstone, ME18 6HT
Offers In The Region Of £700,000



*****TAKE THE VIRTUAL TOUR*** FOUR BEDROOM DETACHED GRADE II LISTED PROPERTY SITUATED IN A QUIET POSITION IN THE POPULAR VILLAGE OF YALDING**

The property is situated in the village of Yalding which lies approximately 5-miles to the south west of Maidstone. The village has excellent local amenities with the County town itself providing a wide range of shopping, educational and social facilities. There is a main line station at Paddock Wood which is about 10-15 minutes from the property, with regular services to London Charing Cross.

This stunning detached house located on the charming High Street in Yalding, Maidstone. This property boasts three spacious reception rooms, perfect for entertaining guests or simply relaxing with your family including a cosy open fireplace in the lounge and log burner in the dining room. With four generously sized bedrooms, two with en-suites there is ample space for everyone to enjoy their own private sanctuary.

Outside there is a private and peaceful garden which is mainly laid to lawn but also benefits from a patio area at the end of the garden for seating with a variety of well stocked borders and bushes. Additionally there is a spacious snug/office with its own log burner and also a separate storage room.

The house features accommodation over three floors, ensuring convenience and comfort for all residents. The detached nature of this property offers privacy and tranquillity, making it a peaceful retreat from the hustle and bustle of everyday life so don't miss the opportunity to make this charming house your new home. Book a viewing today and experience the beauty and elegance that this property has to offer.



GROUND FLOOR

Workshop 11'2 x 8'10 (3.40m x 2.69m)

Kitchen 15'9 x 14'10 (4.80m x 4.52m)

Dining Room 13'11 x 12'3 (4.24m x 3.73m)

Sitting Room 16'1 x 15 (4.90m x 4.57m)

Ground Floor Cloak Room

FIRST FLOOR

Landing

Bedroom 1 16'1 x 9'4 (4.90m x 2.84m)

En-Suite

Bedroom 3 10'11 x 9'3 (3.33m x 2.82m)

Study 6'7 x 5'5 (2.01m x 1.65m)

Family Bathroom

SECOND FLOOR

Bedroom 2 15'1 x 9'1 (4.60m x 2.77m)

En-Suite

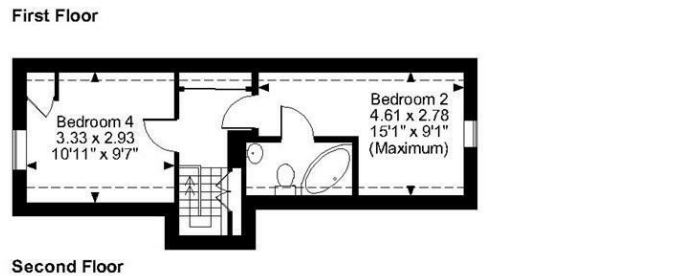
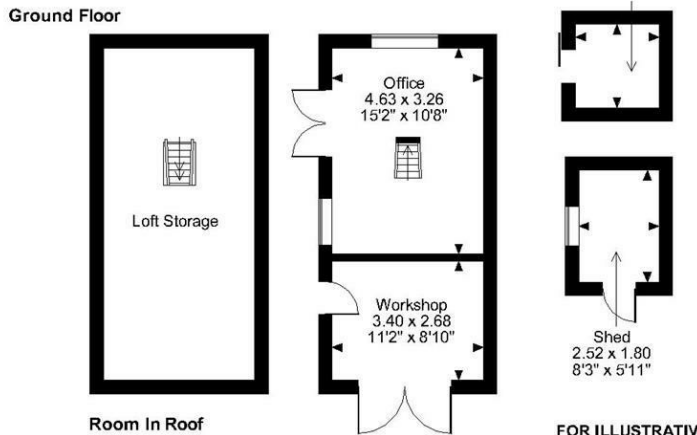
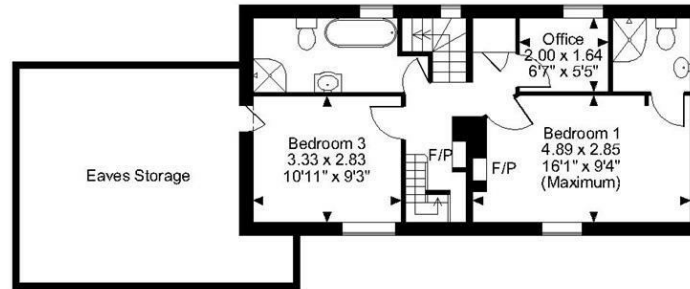
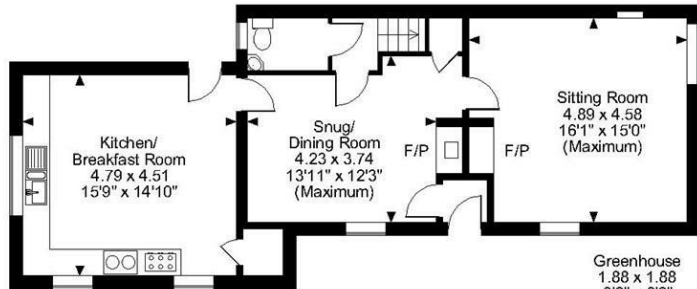
Bedroom 4 10'11 x 9'7 (3.33m x 2.92m)

EXTERNALLY

Office/Snug 15'2 x 10'8 (4.62m x 3.25m)

Page & Wells limited for themselves and for the vendors of this property whose agents they are give notice that: 1. These particulars do not constitute any part of, an offer or a contract. 2. All statements contained in these particulars as to this property are made without responsibility on the part of Page & Wells Limited or the Vendor. 3. None of the statements contained in these particulars as to the property is to be relied on as statements or representations of fact. 4. Any intending purchaser must satisfy himself by inspection or otherwise as to the correctness of each of the statements contained in these particulars. 5. The vendor does not make or give, and neither Page & Wells Limited nor any person in their employment has any authority to make or give any representation whatsoever in relation to this property. These particulars are supplied on the understanding that all negotiations are carried out throughout Page & Wells Limited. Properties with a reference prefixes EAA are those which Page & Wells Limited disclose an interest in accordance with the provisions of the Estates Agents Act 1979

The Tatt, High Street, Yalding, Maidstone
 Approximate Gross Internal Area
 Main House = 1474 Sq Ft/137 Sq M
 Outbuildings = 360 Sq Ft/33 Sq M
 Total = 1834 Sq Ft/170 Sq M



FOR ILLUSTRATIVE PURPOSES ONLY - NOT TO SCALE
 The position & size of doors, windows, appliances and other features are approximate only.
 □□□□ Denotes restricted head height
 © ehouse. Unauthorised reproduction prohibited. Drawing ref. dig/8599146/SS

