



34 Broadoak Avenue, Loose, Maidstone, ME15 6DL
Price £475,000



*****NO FORWARD CHAIN*** EXTENDED FOUR BEDROOM DETACHED FAMILY HOME IN THE SOUGHT AFTER VILLAGE OF LOOSE WITHIN WALKING DISTANCE OF LOCAL AMMENTIES.**

This extended four-bedroom detached home is nestled in a popular residential area, and is conveniently close to local amenities, such as a pharmacy and Sainsbury's Local. The property resides in the coveted Loose village, within strolling distance to essential conveniences and bus stops with frequent rides to Maidstone Town Centre. The town centre offers a variety of shopping, leisure, and educational facilities. On offer to this fabulous family home is a useful entrance porch with W/C stepping into the spacious lounge with large window to the front letting light flood into the property. Through the double doors into the well appointed dining room/family room with sliding doors allowing direct access into the garden. Adjacent is the kitchen with plenty of worktop space and storage and a window that resides over the sink and over looks the rear garden, there is also integral access to the garage via the kitchen. Upstairs, there are three double bedrooms with the main bedroom benefiting from an en-suite and one single which could easily be used as a home office or study and a family bathroom completes the upstairs. Outside, there is part lawn to the front and a bloc-paved driveway offering space for plenty of cars. The private south facing rear garden is neatly enclosed and predominately laid to lawn but also benefits from a patio area for seating with a variety of well stocked borders and bushes. Given the prime position and excellent family home on offer we anticipate plenty of forthcoming interest so if you are on the market for a family home in an excellent development then call Page and Wells Loose Office and book your viewing today to avoid missing out.



GROUND FLOOR

Porch

Lounge 14'5" x 11'7" (4.40m x 3.55m)

Dining Room/Family Room 17'8" x 11'10" (5.40m x 3.62m)

Kitchen 10'5" x 9'0" (3.18m x 2.75m)

Garage 19'3" x 9'8" (5.89m x 2.95m)

FIRST FLOOR

Bedroom 1 17'8" x 9'8" (5.40m x 2.95m)

En-Suite

Bedroom 2 13'10" x 10'3" (4.22m x 3.14m)

Bedroom 3 10'3" x 10'0" (3.14m x 3.05m)

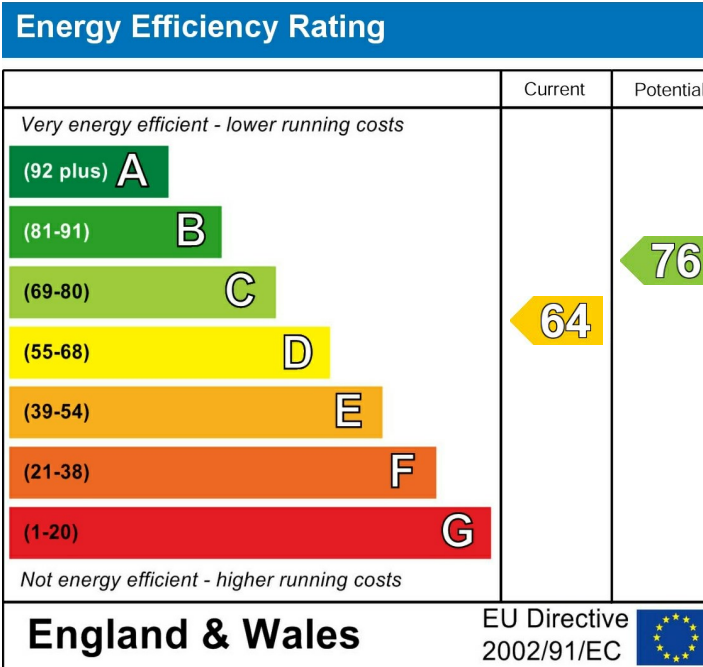
Bedroom 4/Study 9'9" x 7'1" (2.99m x 2.16m)

Family Bathroom

EXTERNALLY

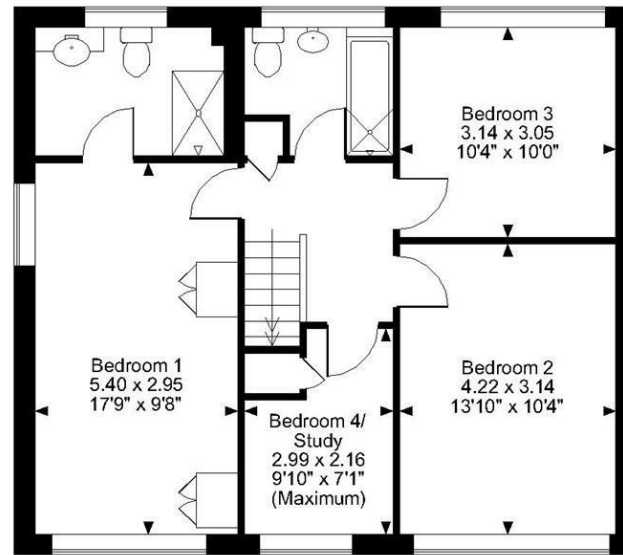
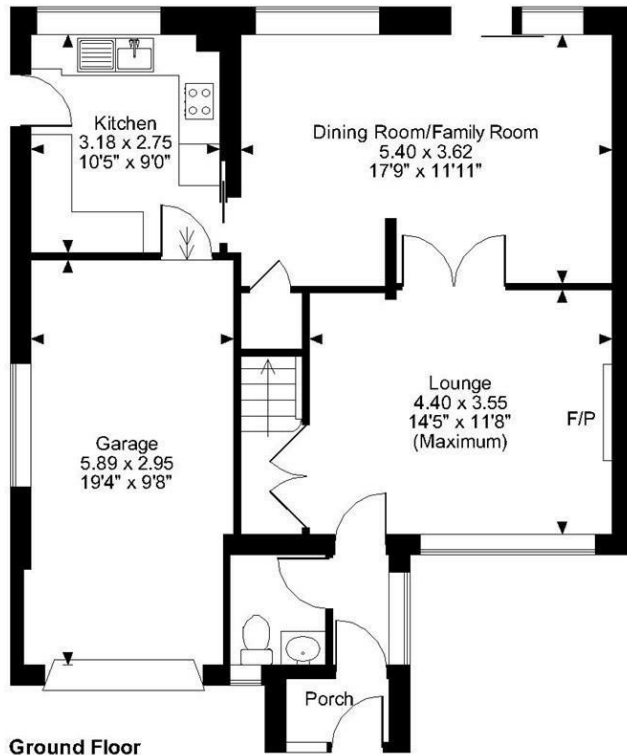
Bloc Paved Driveway to Front

Private South Facing Rear Garden



Page & Wells limited for themselves and for the vendors of this property whose agents they are give notice that: 1. These particulars do not constitute any part of, an offer or a contract. 2. All statements contained in these particulars as to this property are made without responsibility on the part of Page & Wells Limited or the Vendor. 3. None of the statements contained in these particulars as to the property is to be relied on as statements or representations of fact. 4. Any intending purchaser must satisfy himself by inspection or otherwise as to the correctness of each of the statements contained in these particulars. 5. The vendor does not make or give, and neither Page & Wells Limited nor any person in their employment has any authority to make or give any representation whatsoever in relation to this property. These particulars are supplied on the understanding that all negotiations are carried out throughout Page & Wells Limited. Properties with a reference prefixes EAA are those which Page & Wells Limited disclose an interest in accordance with the provisions of the Estates Agents Act 1979

Broadoak Avenue, Maidstone
Approximate Gross Internal Area
Main House = 1262 Sq Ft/117 Sq M
Garage = 185 Sq Ft/17 Sq M
Total = 1447 Sq Ft/134 Sq M



FOR ILLUSTRATIVE PURPOSES ONLY - NOT TO SCALE
 The position & size of doors, windows, appliances and other features are approximate only.
 © ehouse. Unauthorised reproduction prohibited. Drawing ref. dig/8598617/SLU