



Linstone East Street, Hunton, Maidstone, ME15 0RB
Guide Price £650,000

Nestled on East Street in the idyllic village of Hunton, Maidstone, this charming home is immaculately present with bedrooms and bathrooms on the first floor and ground floor, ideal for both growing families and downsizers. Hunton itself lies about 3-miles to the south of the county town. There are excellent local amenities available both at the villages of Coxheath and Marden, the latter providing a mainline station to London and Charing Cross. Inside, there is a spacious entrance hall, cosy lounge, family bathroom, useful utility room and two bedrooms on the ground floor. The highlight of this property is its magnificent open-plan kitchen diner, complete with a stylish island and French doors opening onto the westerly facing garden overlooking picturesque orchards. The main bedroom is on the first floor, with breath-taking views of the orchards along with a convenient dressing room and a luxurious ensuite bathroom.

Parking is effortless, with a driveway accommodating several vehicles, supplemented by a well cared for front lawn. The westerly facing private gardens are predominately laid to lawn with a patio seating area and well stocked borders.

Viewing is highly recommended so don't miss the opportunity to claim this home as your own sanctuary amidst the allure of Hunton's countryside. Call Page and Wells Loose Office today and book your viewing to avoid missing out.



GROUND FLOOR

Entrance Hall

Kitchen/Dining Area 23'3" x 20'11" (7.09m x 6.40m)

Sitting Room 14'10" x 11'7" (4.53m x 3.54m)

Office 13'3" x 8'5" (4.06m x 2.59m)

Utility

Shower Room

Bedroom 2 16'2" x 8'4" (4.95m x 2.56m)

Bedroom 3 14'6" x 11'3" (4.43m x 3.44m)

Bathroom

FIRST FLOOR

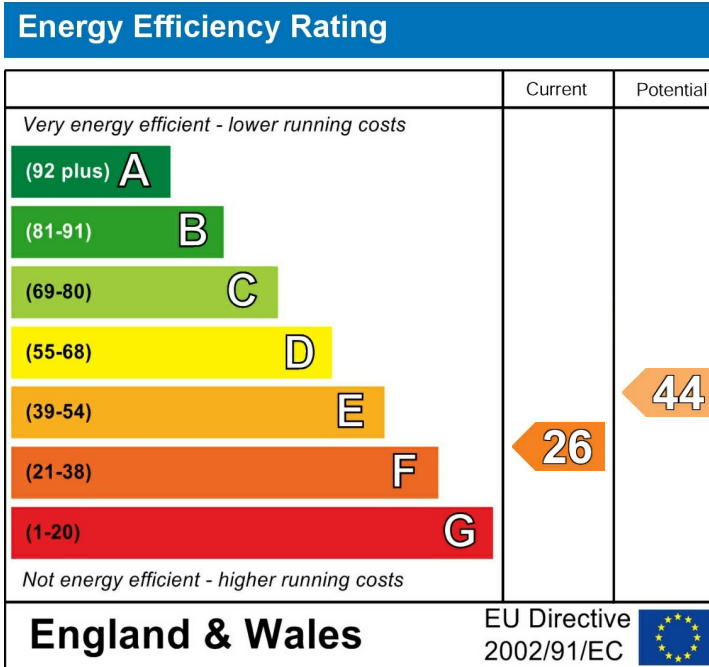
Bedroom 1 16'2" x 15'2" (4.95m x 4.64m)

En-Suite

Dressing Room

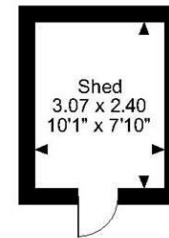
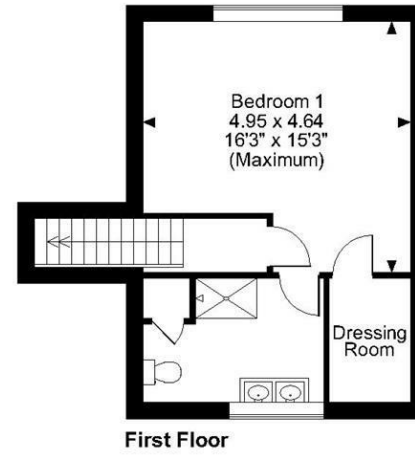
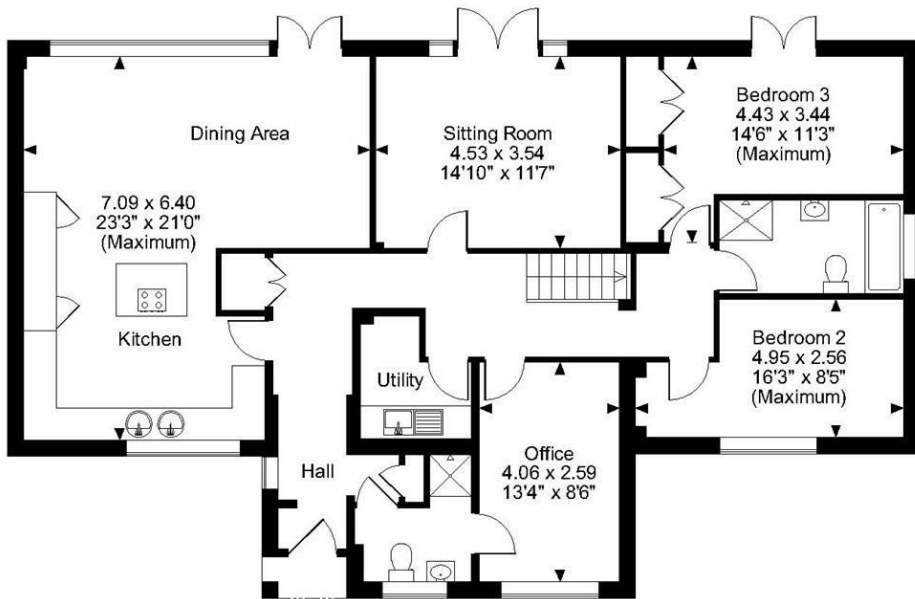
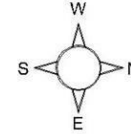
EXTERNALLY

Shed 10'0" x 7'10" (3.07m x 2.40m)



Page & Wells limited for themselves and for the vendors of this property whose agents they are give notice that: 1. These particulars do not constitute any part of, an offer or a contract. 2. All statements contained in these particulars as to this property are made without responsibility on the part of Page & Wells Limited or the Vendor. 3. None of the statements contained in these particulars as to the property is to be relied on as statements or representations of fact. 4. Any intending purchaser must satisfy himself by inspection or otherwise as to the correctness of each of the statements contained in these particulars. 5. The vendor does not make or give, and neither Page & Wells Limited nor any person in their employment has any authority to make or give any representation whatsoever in relation to this property. These particulars are supplied on the understanding that all negotiations are carried out throughout Page & Wells Limited. Properties with a reference prefixes EAA are those which Page & Wells Limited disclose an interest in accordance with the provisions of the Estates Agents Act 1979

Linstone, East Street Hunton, Maidstone, Kent
Approximate Gross Internal Area
Main House = 1782 Sq Ft/166 Sq M
Shed = 79 Sq Ft/7 Sq M
Total = 1861 Sq Ft/173 Sq M



FOR ILLUSTRATIVE PURPOSES ONLY - NOT TO SCALE
 The position & size of doors, windows, appliances and other features are approximate only.
 © ehouse. Unauthorised reproduction prohibited. Drawing ref. dig/8594270/LCO

