



11 Rosemount Close, Loose, ME15 0AJ
Price £550,000



DETACHED CHALET BUNGALOW IN SOUTGH AFTER CUL DE SAC OF LOOSE VILLAGE.

Nestled in a sought-after cul-de-sac, this detached chalet bungalow in Loose Village offers a tranquil retreat with its non-overlooked rear garden. Located just outside the picturesque Loose Conservation area, renowned for its natural beauty, streams, and woodland, this property provides a peaceful setting while being conveniently close to amenities, including a useful bus with a frequent services to Maidstone Town Centre within a few minutes walk.

The bungalow offers a spacious and adaptable layout, ideal for families or downsizers seeking versatile accommodation. The ground floor features a welcoming entrance hall leading to a well-appointed double bedroom with built-in wardrobes, complemented by a convenient ground floor bathroom with a generous corner shower. The lounge enjoys a front aspect, while the kitchen and dining area overlook the serene rear garden. An extension provides an additional family room. The ground floor has potential to reconfigure the layout to accommodate additional bedrooms if desired.

Upstairs, the main bedroom benefits from an ensuite cloakroom, offering scope for further enhancement into a full bathroom. Outside, the property delights with its manicured front gardens adorned with colorful plants and shrubs. A driveway extends to the side, leading to a practical garage equipped with power and lighting. The mature gardens at the rear provide a private peaceful retreat, complete with hedging, lawns, and an array of plant and shrubs.

With its desirable location and potential for further improvement, this charming home is sure to attract considerable interest. Don't miss out – contact Page and Wells Loose Office today to schedule your viewing.



GORUND FLOOR

Entrance Hall

Lounge 15'11" x 10'7" (4.86m x 3.23m)

Kitchen 14'10" x 11'11" (4.53m x 3.65m)

Dining Room 16'3" x 10'7" (4.97m x 3.23m)

Family Room 9'2" x 8'4" (2.80m x 2.55m)

Bedroom 2 10'9" x 10'5" (3.30m x 3.19m)

Bathroom

Separate W/C

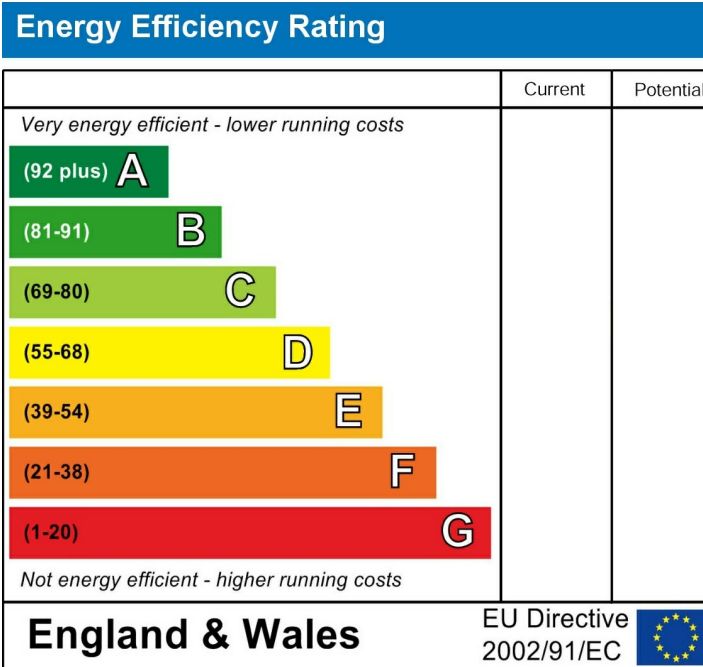
FIRST FLOOR

Bedroom 1 19'3" x 9'3" (5.89m x 2.82m)

EXTERNALLY

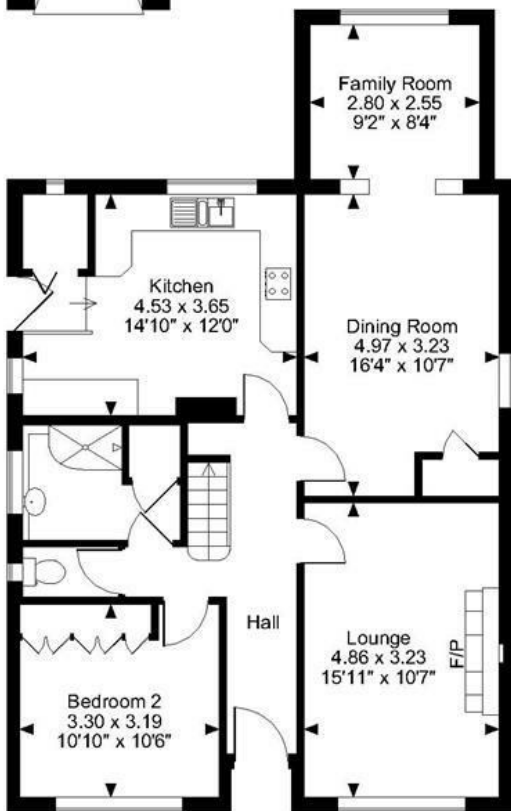
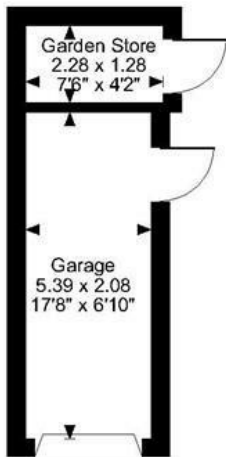
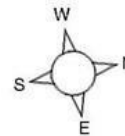
Garage 17'8" x 6'9" (5.39m x 2.08m)

Garden Store 7'5" x 4'2" (2.28m x 1.28m)

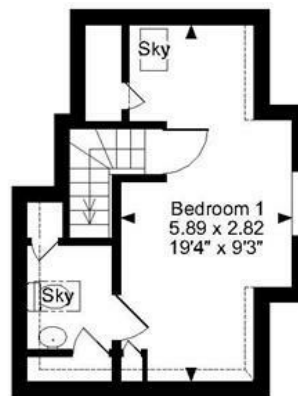


Page & Wells limited for themselves and for the vendors of this property whose agents they are give notice that: 1. These particulars do not constitute any part of, an offer or a contract. 2. All statements contained in these particulars as to this property are made without responsibility on the part of Page & Wells Limited or the Vendor. 3. None of the statements contained in these particulars as to the property is to be relied on as statements or representations of fact. 4. Any intending purchaser must satisfy himself by inspection or otherwise as to the correctness of each of the statements contained in these particulars. 5. The vendor does not make or give, and neither Page & Wells Limited nor any person in their employment has any authority to make or give any representation whatsoever in relation to this property. These particulars are supplied on the understanding that all negotiations are carried out throughout Page & Wells Limited. Properties with a reference prefixes EAA are those which Page & Wells Limited disclose an interest in accordance with the provisions of the Estates Agents Act 1979

Rosemount Close, Loose, Maidstone, Kent
 Approximate Gross Internal Area
 Main House = 1108 Sq Ft/103 Sq M
 Garage = 121 Sq Ft/11 Sq M
 Garden Store = 31 Sq Ft/3 Sq M
 Total = 1260 Sq Ft/117 Sq M



Ground Floor



First Floor

FOR ILLUSTRATIVE PURPOSES ONLY - NOT TO SCALE

The position & size of doors, windows, appliances and other features are approximate only.

□□□□ Denotes restricted head height

© ehouse. Unauthorised reproduction prohibited. Drawing ref. dig/8594084/LCO

