



**13 Springett Way, Coxheath, Maidstone, ME17 4HQ**  
**Offers In Excess Of £375,000**





**EXTENDED THREE BEDROOM HOME WITH AMPLE OFF ROAD PARKING, GARAGE AND DELIGHTFUL WEST FACING GARDEN**

Situated in the popular village of Coxheath, the home is within walking distance of local amenities including Tesco Express, Londis, Local Bakers and Post Office. Coxheath Primary School and Cornwallis Academy are also walking distance from the home, and there are frequent buses services to Maidstone Town Centre from the village, offering a variety of shops, restaurants and social facilities. For the commuter, Staplehurst and Marden train stations are a short drive away offering frequent mainline services to London.

This spacious family home offers spacious and adaptable accommodation and has been well cared for including recently fitted windows and garage door. Inside, there is a generous hallway, front lounge, dining area, and fitted kitchen. An extension at the rear adds a versatile space such as a study, family area or play area for children. On the first floor there are three bedrooms, with the first two benefitting from built-in wardrobes. Completing the layout is a family bathroom with a separate WC.

Outside, the driveway provides ample off-road parking, leading to a detached garage equipped with power and lighting. The garden has been well-landscaped by the current owner and benefits from a westerly aspect with patio seating area offering a serene outdoor retreat.

Viewing is highly recommended. Contact Page and Wells Loose Office and book your viewing to avoid missing out.



**GROUND FLOOR**

Porch

Entrance Hall

Lounge/Family Area

Kitchen

**FIRST FLOOR**

Bedroom 1

Bedroom 2

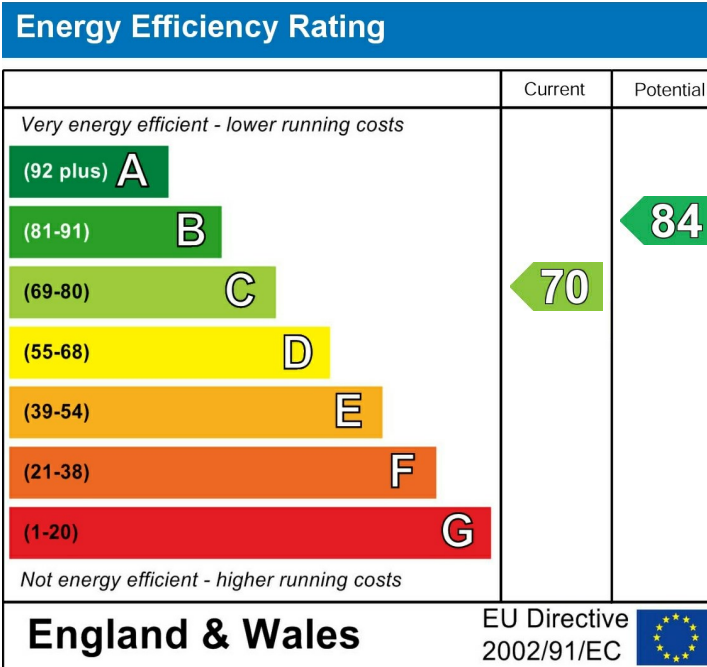
Bedroom 3

Bathroom

Separate W/C

**EXTERNALLY**

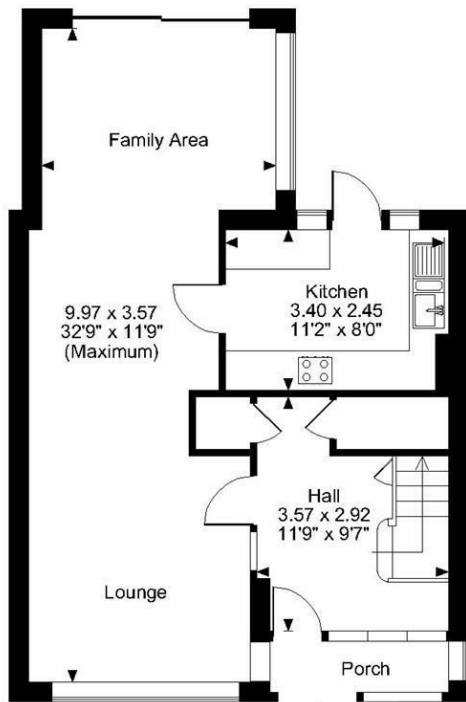
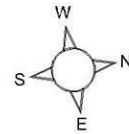
Garage



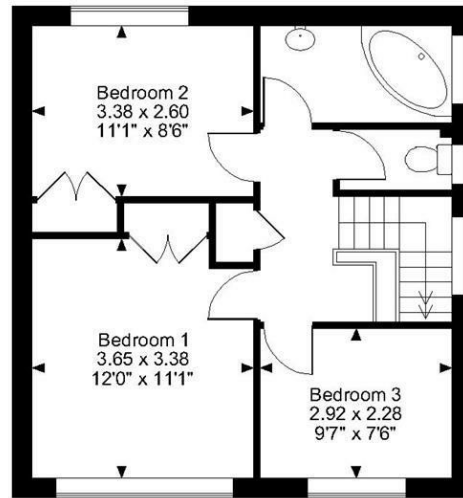
Page & Wells limited for themselves and for the vendors of this property whose agents they are give notice that: 1. These particulars do not constitute any part of, an offer or a contract. 2. All statements contained in these particulars as to this property are made without responsibility on the part of Page & Wells Limited or the Vendor. 3. None of the statements contained in these particulars as to the property is to be relied on as statements or representations of fact. 4. Any intending purchaser must satisfy himself by inspection or otherwise as to the correctness of each of the statements contained in these particulars. 5. The vendor does not make or give, and neither Page & Wells Limited nor any person in their employment has any authority to make or give any representation whatsoever in relation to this property. These particulars are supplied on the understanding that all negotiations are carried out throughout Page & Wells Limited. Properties with a reference prefixes EAA are those which Page & Wells Limited disclose an interest in accordance with the provisions of the Estates Agents Act 1979



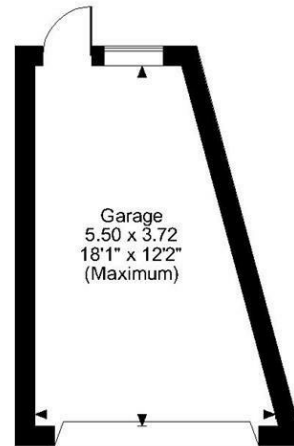
Springett Way, Coxheath, Maidstone  
 Approximate Gross Internal Area  
 Main House = 1059 Sq Ft/98 Sq M  
 Garage = 176 Sq Ft/16 Sq M  
 Total = 1235 Sq Ft/114 Sq M



Ground Floor



First Floor



**FOR ILLUSTRATIVE PURPOSES ONLY - NOT TO SCALE**

The position & size of doors, windows, appliances and other features are approximate only.  
 © ehouse. Unauthorised reproduction prohibited. Drawing ref. dig/8593096/LCO