



Pear View, 3 Forge Lane, East Farleigh, Maidstone, ME15 0HG
Price £450,000



CHARMING 3/4 BEDROOM PERIOD HOME NESTLED IN THE DESIRABLE VILLAGE OF EAST FARLEIGH

Nestled within the sought-after village of East Farleigh, this fabulous period home is within walking distance of East Farleigh Train Station, providing convenient access to London, and within easy reach of motorway services, while enjoying panoramic views of the picturesque surrounding farmland. Local amenities, including pubs, restaurants, and East Farleigh Primary School, are within walking distance, while Maidstone town centre, with its diverse range of shops and dining options, is only a brief five-minute drive away.

This excellent period home offers spacious and adaptable accommodation. On the ground there is an inviting entrance porch leads to the hallway. The ground floor features a tastefully appointed lounge with a striking fireplace and practical storage cupboard, alongside a charming kitchen diner overlooking the rear garden. Completing this level is a family bathroom with separate bath and shower facilities. Upstairs, there are three generously proportioned bedrooms with the main bedroom showcasing an exposed brick fireplace. The second floor presents a versatile loft room, ideal for use as an additional bedroom, study, or recreational space and the room benefits from a cloakroom

Externally, the property offers a driveway with parking for two cars at the front, while a garden path flanked by a variety of plants and shrubs leads to the entrance. The lovely rear gardens offers areas of lush lawns lawns, a patio area, a tranquil pond, and well-tended borders. Additionally, practical amenities include a greenhouse and shed for storage purposes.

Viewing is strongly recommended to fully appreciate the charm and functionality of this exceptional property. Contact the Page and Wells Loose Office and arrange your viewing to avoid missing out!



GROUND FLOOR

Lounge 13'5" x 12'10" (4.11m x 3.92m)

Dining Room 16'9" x 8'0" (5.13m x 2.44m)

Kitchen 9'8" x 9'4" (2.97m x 2.85m)

Bathroom

FIRST FLOOR

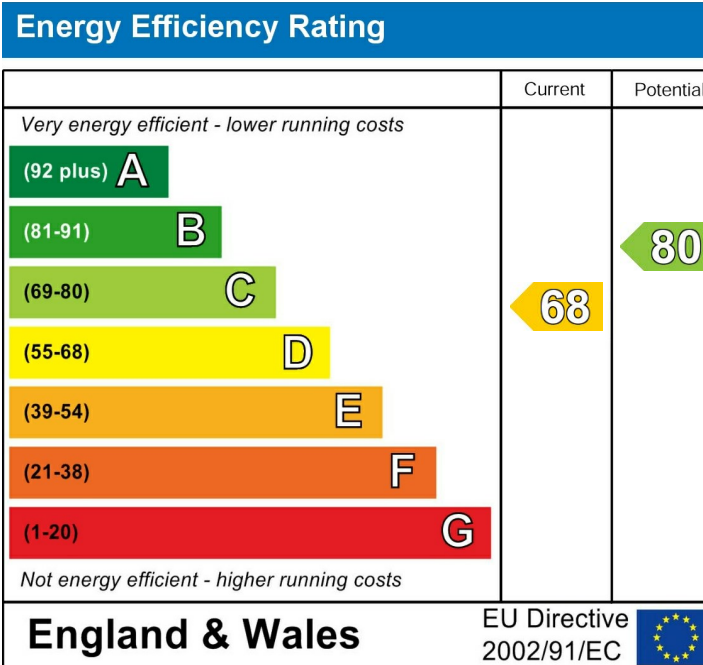
Bedroom 1 13'5" x 11'7" (4.11m x 3.54m)

Bedroom 2 11'10" x 8'10" (3.61m x 2.70m)

Bedroom 3 8'7" x 7'7" (2.63m x 2.33m)

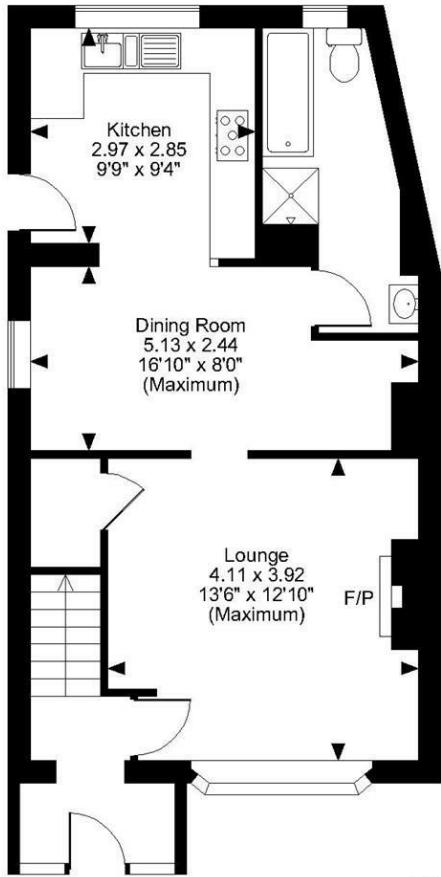
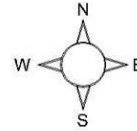
SECOND FLOOR

Bedroom 4 14'4" x 11'9" (4.39m x 3.60m)

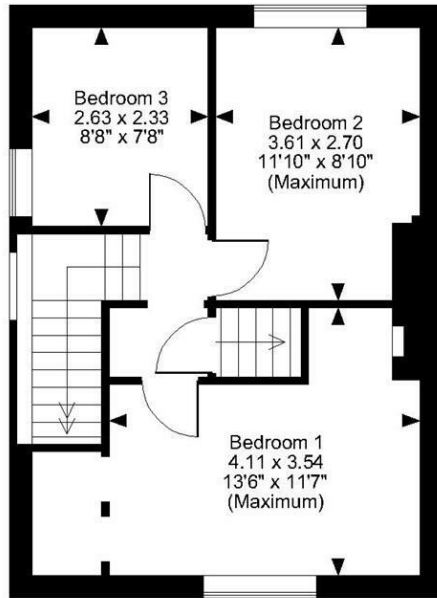


Page & Wells limited for themselves and for the vendors of this property whose agents they are give notice that: 1. These particulars do not constitute any part of, an offer or a contract. 2. All statements contained in these particulars as to this property are made without responsibility on the part of Page & Wells Limited or the Vendor. 3. None of the statements contained in these particulars as to the property is to be relied on as statements or representations of fact. 4. Any intending purchaser must satisfy himself by inspection or otherwise as to the correctness of each of the statements contained in these particulars. 5. The vendor does not make or give, and neither Page & Wells Limited nor any person in their employment has any authority to make or give any representation whatsoever in relation to this property. These particulars are supplied on the understanding that all negotiations are carried out throughout Page & Wells Limited. Properties with a reference prefixes EAA are those which Page & Wells Limited disclose an interest in accordance with the provisions of the Estates Agents Act 1979

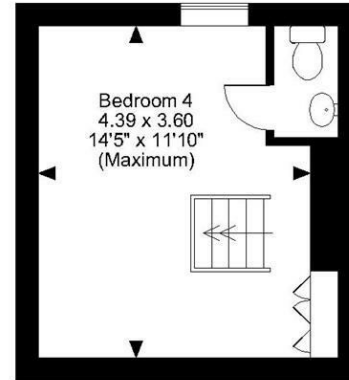
Pear View, Forge Lane, East Farleigh, Maidstone
Approximate Gross Internal Area
1122 Sq Ft/104 Sq M



Ground Floor



First Floor



Second Floor

FOR ILLUSTRATIVE PURPOSES ONLY - NOT TO SCALE

The position & size of doors, windows, appliances and other features are approximate only.

© ehouse. Unauthorised reproduction prohibited. Drawing ref. dig/8586873/LCO

