



**The Shires Plough Wents Road, Chart Sutton, Maidstone, ME17 3RY**  
**Price £600,000**



#### EXECUTIVE FOUR BEDROOM DETACHED HOME WITH BEAUTIFUL KITCHEN/DINER WITH DOUBLE GARAGE

This meticulously maintained four-bedroom detached home is situated in the sought-after village of Chart Sutton, offering convenient access to local amenities, excellent schools, and mainline services to London. Maidstone Town Centre is also within easy reach, providing a range of dining, shopping, and recreational options.

The property has been carefully tended to by its current owner. Inside, there is a welcoming entrance hall with stairs to the first floor, there is a comfortable lounge featuring a front-facing window and a gas fireplace. Adjacent is a well-appointed kitchen diner with bespoke cabinetry, granite countertops, and a sink maceratorator. The dining area flows seamlessly into a charming conservatory with a recently installed lightweight tiled roof. Completing the ground floor is a practical cloakroom with laundry facilities.

Upstairs, the main bedroom offers fitted wardrobes and an ensuite, while the remaining three bedrooms offer ample space, with the second bedroom also featuring fitted wardrobes. A family bathroom completes the first floor. Externally, a driveway provides parking for three to four cars and double garage complete with new garage doors, and the neatly enclosed garden offers a serene retreat, predominantly laid to lawn with carefully tended borders and hedging. This refined property is sure to attract interest. Contact the Page and Wells Loose Office promptly to arrange a viewing.



**GROUND FLOOR**

Entrance Hall

Lounge 17'9" x 11'11" (5.43m x 3.64m)

Kitchen/Dining Area 27'5" x 9'8" (8.36m x 2.95m)

Conservatory 12'11" x 11'11" (3.94m x 3.64m)

**FIRST FLOOR**

Landing

Bedroom 1 17'7" x 11'11" (5.36m x 3.64m)

En-Suite

Bedroom 2 12'8" x 8'10" (3.87m x 2.70m)

Bedroom 3 11'6" x 8'10" (3.52m x 2.70m)

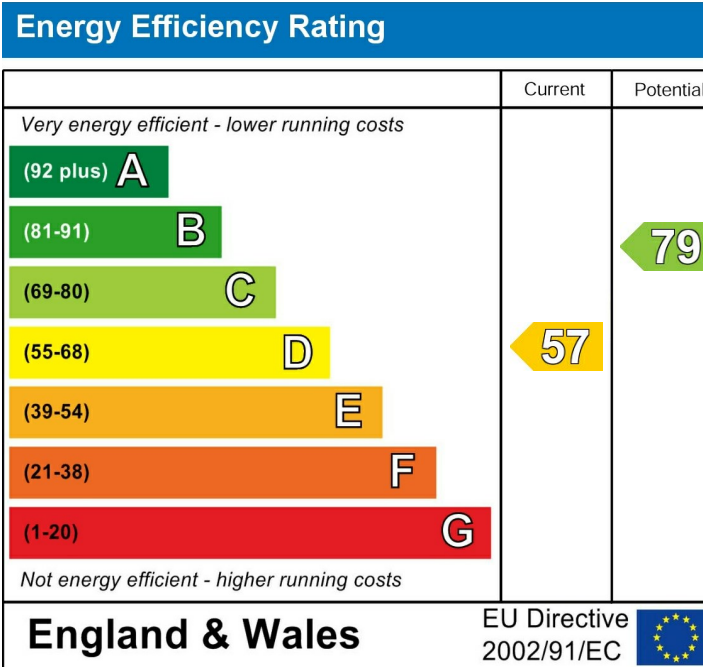
Bedroom 4 11'1" x 9'10" (3.39m x 3.02m)

Family Bathroom

**EXTERNALLY**

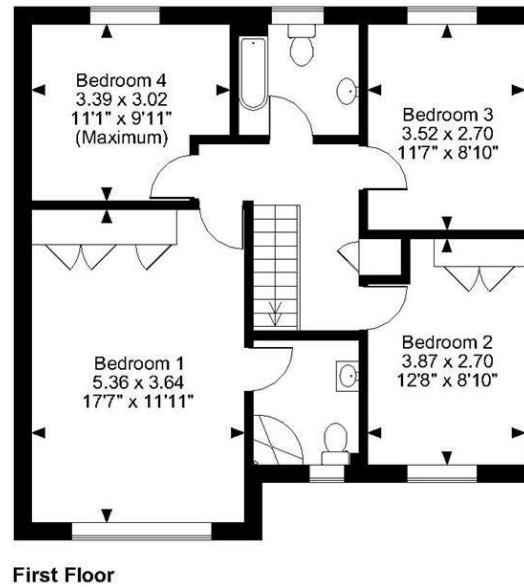
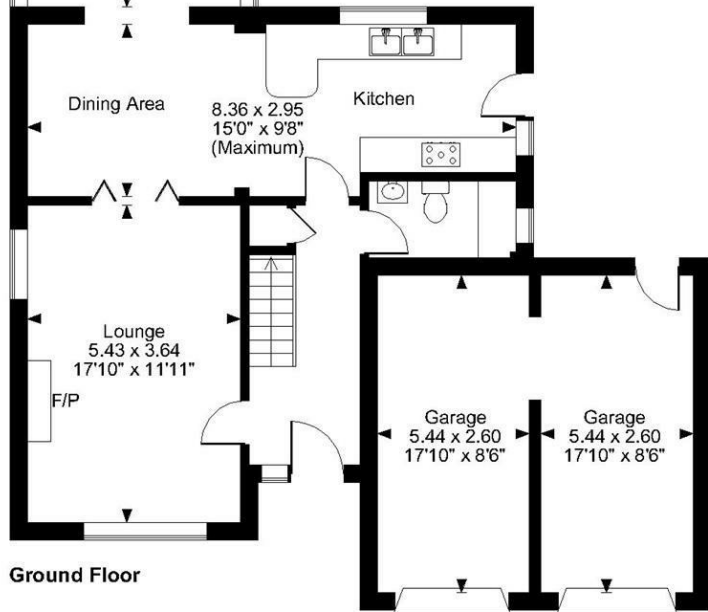
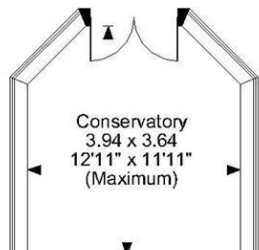
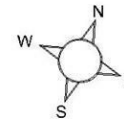
Garage 17'10" x 8'6" (5.44m x 2.60m)

Garage 17'10" x 8'6" (5.44m x 2.60m)



Page & Wells limited for themselves and for the vendors of this property whose agents they are give notice that: 1. These particulars do not constitute any part of, an offer or a contract. 2. All statements contained in these particulars as to this property are made without responsibility on the part of Page & Wells Limited or the Vendor. 3. None of the statements contained in these particulars as to the property is to be relied on as statements or representations of fact. 4. Any intending purchaser must satisfy himself by inspection or otherwise as to the correctness of each of the statements contained in these particulars. 5. The vendor does not make or give, and neither Page & Wells Limited nor any person in their employment has any authority to make or give any representation whatsoever in relation to this property. These particulars are supplied on the understanding that all negotiations are carried out throughout Page & Wells Limited. Properties with a reference prefixes EAA are those which Page & Wells Limited disclose an interest in accordance with the provisions of the Estates Agents Act 1979

**The Shires, PloughWents Road Chart Sutton, Maidstone**  
 Approximate Gross Internal Area  
 Main House = 1485 Sq Ft/138 Sq M  
 Garage = 316 Sq Ft/29 Sq M  
 Total = 1801 Sq Ft/167 Sq M



**FOR ILLUSTRATIVE PURPOSES ONLY - NOT TO SCALE**

The position & size of doors, windows, appliances and other features are approximate only.  
 © ehouse. Unauthorised reproduction prohibited. Drawing ref. dig/8591460/LCO

