



32 St. Lawrence Crescent, Coxheath, Maidstone, ME17 4FS
Offers In Excess Of £340,000



BEAUTIFULLY PRESENTED THREE BEDROOM SEMI-DETACHED HOME WITH TWO PARKING SPACES IN A POPULAR RESIDENTIAL DEVELOPMENT

This fabulous home is perfectly situated in a highly sought-after location being walking distance from Coxheath Primary School and local amenities such as Tesco Express, Post Office, and the Spice Lounge Curry House. Coxheath itself is conveniently located a short distance from Maidstone Town Centre, offering a variety of shopping, social, and educational facilities, including well-regarded Grammar Schools. Additionally, the property benefits from its proximity to picturesque countryside, allowing for delightful walks through the nearby Weald area. This inviting 3-bedroom property is move-in ready. On the ground floor, you'll find an entrance hallway, WC, modern kitchen, and a spacious lounge/diner with access out to the garden. Ascending to the first floor, a landing leads to 3 bedrooms, with the additional benefit of an en-suite to the main bedroom, and a family bathroom. Externally, two allocated parking space to the front includes an EV electric charging point, while a garden/patio area provides a delightful space for outdoor gatherings. This property is a must-see, and internal viewing is highly recommended to fully appreciate its charms. Contact Page & Wells today to schedule your viewing.



GROUND FLOOR

Entrance Hall

Kitchen 11'10" x 9'9" (3.62m x 2.98m)

Lounge/Dining Room 16'10" x 13'10" (5.15m x 4.24m)

W/C

FIRST FLOOR

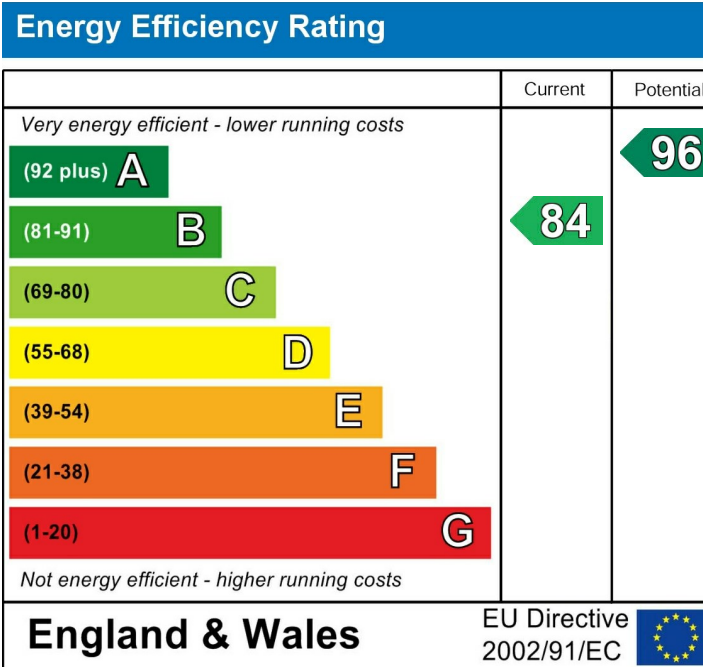
Bedroom 1 15'9" x 9'9" (4.81m x 2.98m)

En-Suite

Bedroom 2 10'0" x 9'9" (3.05m x 2.98m)

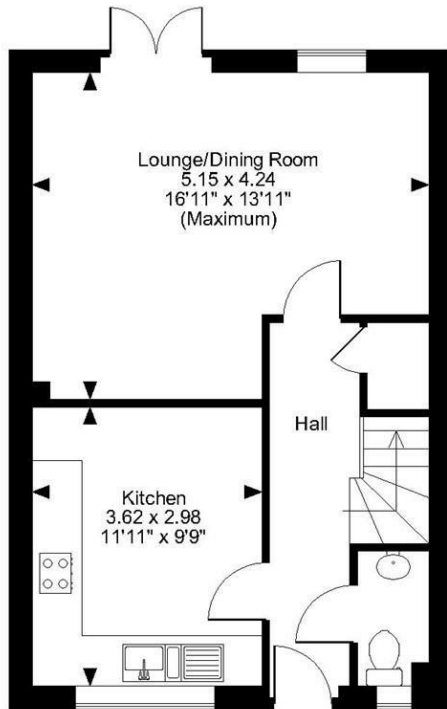
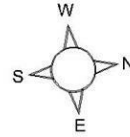
Bedroom 3 10'3" x 6'9" (3.14m x 2.07m)

Family Bathroom

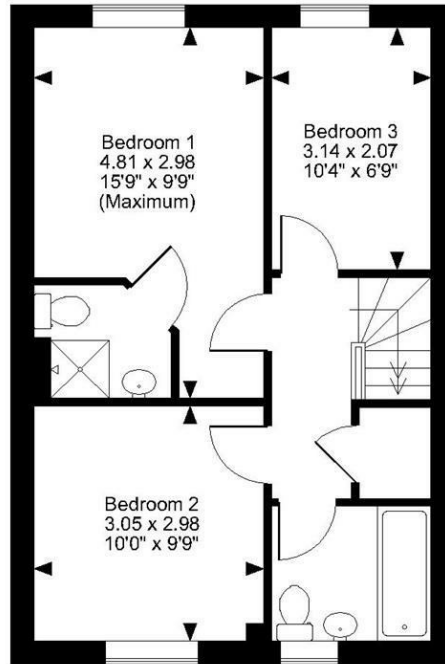


Page & Wells limited for themselves and for the vendors of this property whose agents they are give notice that: 1. These particulars do not constitute any part of, an offer or a contract. 2. All statements contained in these particulars as to this property are made without responsibility on the part of Page & Wells Limited or the Vendor. 3. None of the statements contained in these particulars as to the property is to be relied on as statements or representations of fact. 4. Any intending purchaser must satisfy himself by inspection or otherwise as to the correctness of each of the statements contained in these particulars. 5. The vendor does not make or give, and neither Page & Wells Limited nor any person in their employment has any authority to make or give any representation whatsoever in relation to this property. These particulars are supplied on the understanding that all negotiations are carried out throughout Page & Wells Limited. Properties with a reference prefixes EAA are those which Page & Wells Limited disclose an interest in accordance with the provisions of the Estates Agents Act 1979

St. Lawrence Crescent, Coxheath, Maidstone
Approximate Gross Internal Area
887 Sq Ft/82 Sq M



Ground Floor



First Floor

FOR ILLUSTRATIVE PURPOSES ONLY - NOT TO SCALE

The position & size of doors, windows, appliances and other features are approximate only.
© ehouse. Unauthorised reproduction prohibited. Drawing ref. dig/8591745/LCO

