



2 Forge Cottages Forge Lane, Boxley, Maidstone, Kent, ME14 3DT
Offers In Excess Of £400,000



Discover tranquility and charm in this delightful character cottage nestled in the heart of Boxley village, offering picturesque views and doorstep access to the countryside, surrounded by Chapel Down vineyards. Situated in an elevated position along a quiet private lane, this delightful home provides a serene retreat in an area of Outstanding Natural Beauty at the foot of the North Downs, while being conveniently located for access to M2 and M20 motorway networks and only three miles from Maidstone Town Centre offering a wide range of amenities and mainline services to London.

The home offers an abundance of character throughout. Inside, there is a welcoming entrance porch, leading into the lounge, accentuated by a striking log burner and exposed brick surround. The kitchen/diner exudes country charm, featuring oak carpentry, elegant granite worksurfaces, space for an Aga and a convenient integrated dishwasher. There is a quaint stable door opening to the rear garden from the kitchen. Upstairs, the recently renovated family bathroom showcases a high quality finish, boasting, underfloor heated marble stone floor, marble tops/tiles and 'Heritage' cabinets and suite. Both bedrooms offer ample space, adorned with handcrafted oak draws and bed in the main bedroom.

Outside, the generous garden offers considerable privacy and hosts a delightful block paved patio, great for a BBQ with friends or late morning breakfast in the summer. In addition, there is a functional workshop equipped with power, along with a cleared space ready for an outbuilding, perfect for a home office with the village supporting Gigabit internet. Rarely seen with this type of property, a useful garage accompanies the property.

DON'T MISS OUT. Schedule your viewing today and experience the tranquility and beauty of countryside living, walks along the North Downs, church bells and the home cooked food of the Kings Arms Public House all within a few steps of your front door.



ON THE GROUND FLOOR

Porch

Lounge 13'10" x 13'5" (4.23m x 4.10m)

Kitchen/Dining Room 14'5" x 10'7" (4.41m x 3.24m)

Pantry

ON THE FIRST FLOOR

Landing

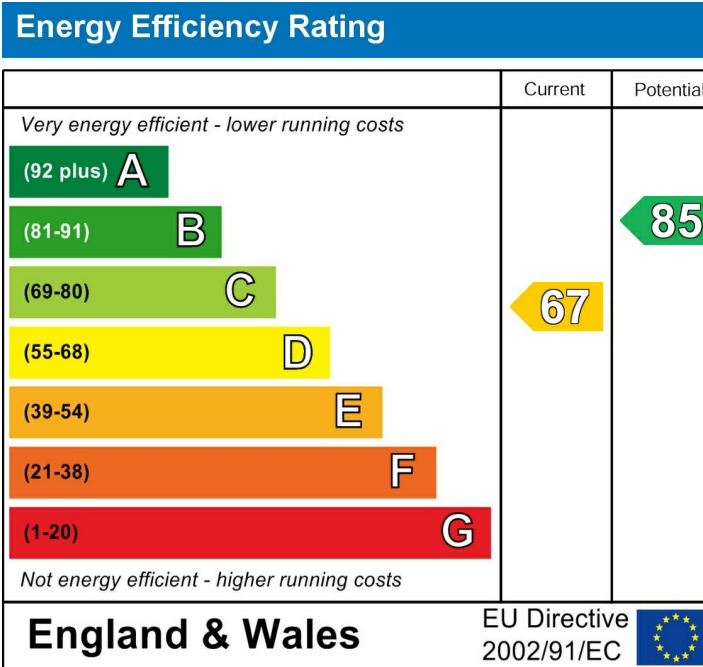
Bedroom 1 14'2" x 13'11" (4.33m x 4.25m)

Bedroom 2 10'10" x 7'6" (3.31m x 2.30m)

Bathroom

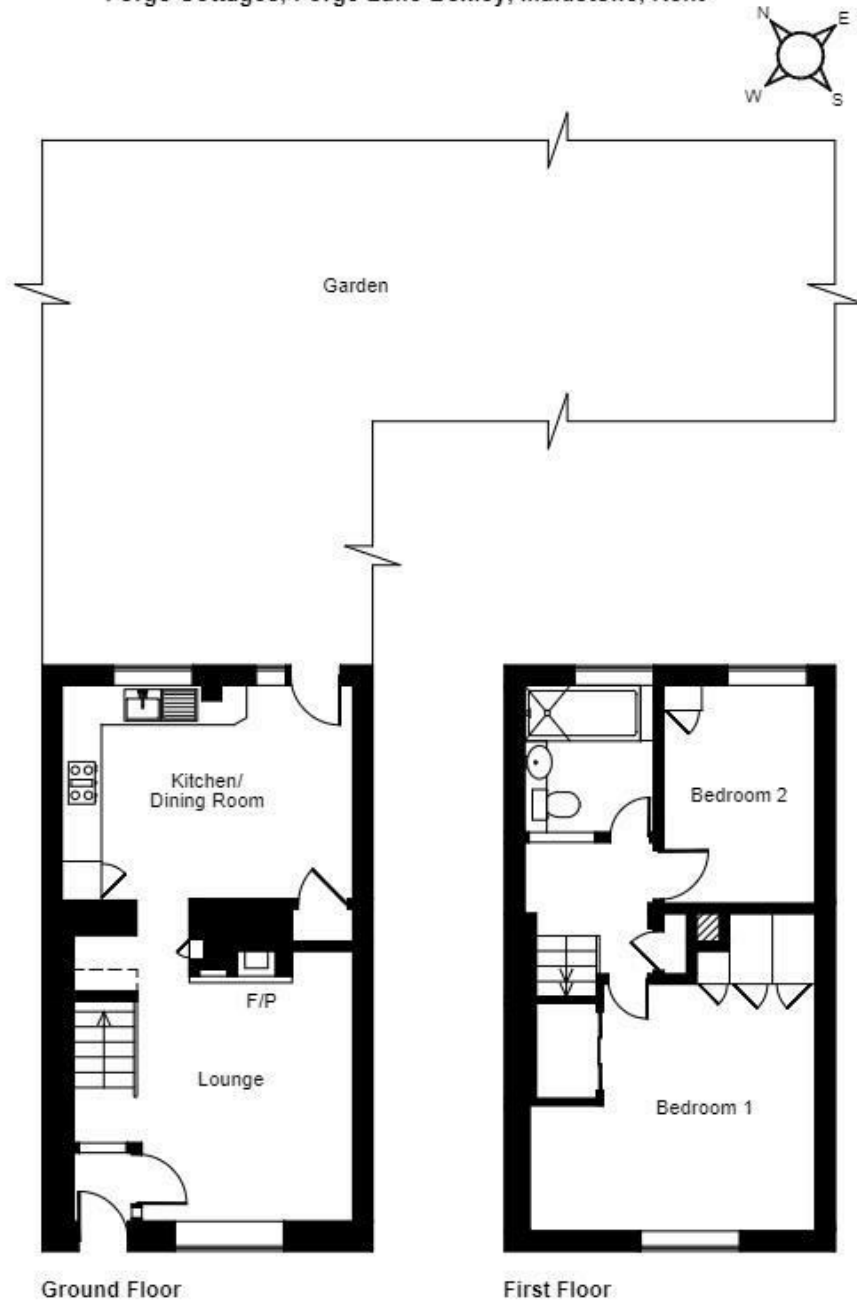
EXTERNALLY

Garage and Workshop



Page & Wells limited for themselves and for the vendors of this property whose agents they are give notice that: 1. These particulars do not constitute any part of, an offer or a contract. 2. All statements contained in these particulars as to this property are made without responsibility on the part of Page & Wells Limited or the Vendor. 3. None of the statements contained in these particulars as to the property is to be relied on as statements or representations of fact. 4. Any intending purchaser must satisfy himself by inspection or otherwise as to the correctness of each of the statements contained in these particulars. 5. The vendor does not make or give, and neither Page & Wells Limited nor any person in their employment has any authority to make or give any representation whatsoever in relation to this property. These particulars are supplied on the understanding that all negotiations are carried out throughout Page & Wells Limited. Properties with a reference prefixes EAA are those which Page & Wells Limited disclose an interest in accordance with the provisions of the Estates Agents Act 1979

Forge Cottages, Forge Lane Boxley, Maidstone, Kent



Ground Floor

First Floor

FOR ILLUSTRATIVE PURPOSES ONLY - NOT TO SCALE

The position & size of doors, windows, appliances and other features are approximate only.

□□□□ Denotes restricted head height

© ehouse. Unauthorised reproduction prohibited. Drawing ref. dig/8503110/SS

