



**Le Havre Heath Road, Boughton Monchelsea, Maidstone, Kent, ME17 4HR**  
**Price £600,000**



VERSATILE DETACHED 4/5 BEDROOM FAMILY HOME WITH STUNNING VIEWS SITUATED IN THE SOUGHT AFTER VILLAGE OF BOUGHTON MONCHELSEA

This exceptional family home offers a flexible layout spread across three floors, providing spacious and adaptable living spaces. The ground floor comprises a welcoming lounge with a dual burner and surround, a dining room for entertaining, a conservatory opening onto the garden, and a well-appointed kitchen boasting ample fitted units and worktop space. Additionally, there's a convenient utility room housing the washing machine and serviced boiler, along with a ground floor study featuring an ensuite, ideal for use as an additional bedroom if desired. On the first floor, there are three generously sized bedrooms, one of which enjoys ensuite facilities, alongside a family bathroom and a dressing room that can be utilised as an extra bedroom if needed. The second floor reveals the guest bedroom retreat, complete with an ensuite, walk in wardrobe, and captivating countryside views. Outside, the property boasts a recently laid driveway providing parking for multiple vehicles, gated side access leading to a meticulously maintained 160ft garden featuring lush lawns, well-stocked borders, and two sheds with power supply. A fabulous patio seating area overlooks a field adorned with newly planted cherry trees. Situated in the sought-after village of Boughton Monchelsea, residents benefit from proximity to excellent schools easy access to Staplehurst Station, offering swift mainline services to London in approximately 50 minutes. With its convenient location and exceptional features, this property is sure to generate significant interest. Contact Page and Wells Loose Office today to arrange your viewing and secure your opportunity to experience this remarkable family home.



## GROUND FLOOR

Entrance Hall 14'2" x 6'3" (4.33m x 1.91m)

Lounge 14'6" x 13'6" (4.44m x 4.12m)

Kitchen 16'4",272'3" x 8'4" (5,83m x 2.56m)

Dining Room 11'10" x 9'11" (3.62m x 3.04m)

Conservatory 11'7" x 8'8" (3.55m x 2.66m)

Utility Room 6'6" x 5'5" (1.99m x 1.66m)

Office 13'11" x 8'2" (4.26m x 2.49m)

## FIRST FLOOR

Landing

Bedroom 2 17'0" x 8'2" (5.19m x 2.49m)

En-Suite

Bedroom 3 11'11" x 11'9" (3.64m x 3.60m)

Bedroom 4 11'9" x 10'10" (3.60m x 3.32m)

Dressing Room 9'10" x 7'10" (3.01m x 2.39m)

Family Bathroom

## SECOND FLOOR

Bedroom 1 24'3" x 13'7" (7.40m x 4.16m)

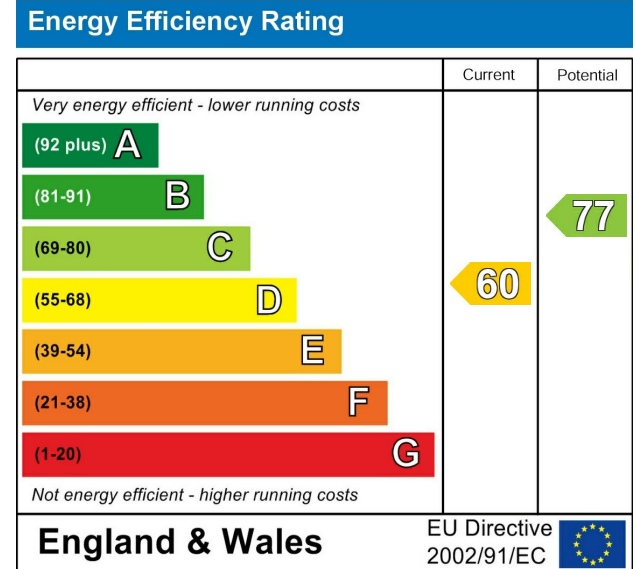
En-Suite

Walk-in Wardrobe

## EXTERNALLY

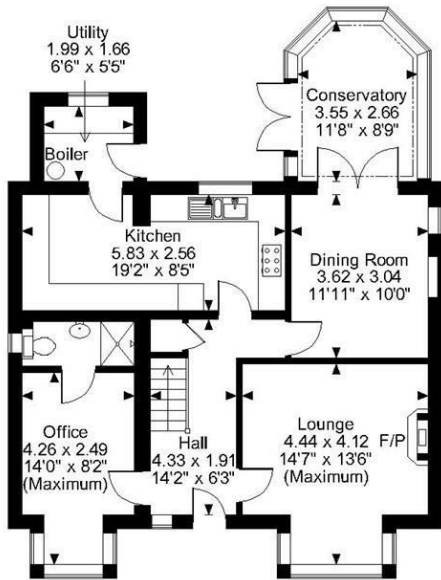
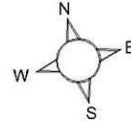
Shed 11'11" x 9'10" (3.65m x 3.00m)

Shed 9'11" x 7'11" (3.03m x 2.42m)

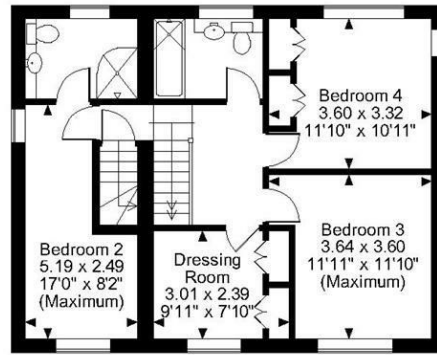


Page & Wells limited for themselves and for the vendors of this property whose agents they are give notice that: 1. These particulars do not constitute any part of, an offer or a contract. 2. All statements contained in these particulars as to this property are made without responsibility on the part of Page & Wells Limited or the Vendor. 3. None of the statements contained in these particulars as to the property is to be relied on as statements or representations of fact. 4. Any intending purchaser must satisfy himself by inspection or otherwise as to the correctness of each of the statements contained in these particulars. 5. The vendor does not make or give, and neither Page & Wells Limited nor any person in their employment has any authority to make or give any representation whatsoever in relation to this property. These particulars are supplied on the understanding that all negotiations are carried out throughout Page & Wells Limited. Properties with a reference prefixes EAA are whose which Page & Wells Limited disclose an interest in accordance with the provisions of the Estates Agents Act 1979

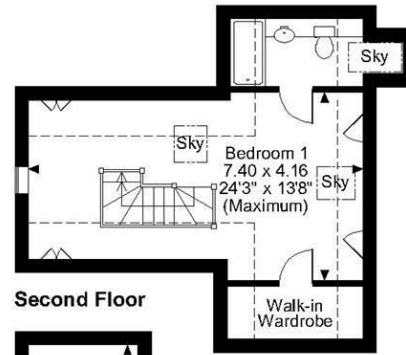
**Le Havre, Heath Road Boughton Monchelsea, Maidstone, Kent**  
**Approximate Gross Internal Area**  
**Main House = 1784 Sq Ft/166 Sq M**  
**Sheds = 197 Sq Ft/18 Sq M**  
**Total = 1981 Sq Ft/184 Sq M**



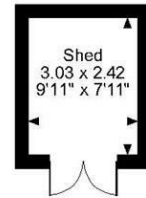
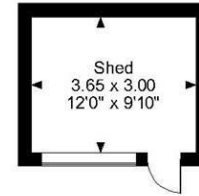
**Ground Floor**



**First Floor**



**Second Floor**



**FOR ILLUSTRATIVE PURPOSES ONLY - NOT TO SCALE**  
 The position & size of doors, windows, appliances and other features are approximate only.  
 □ Denotes restricted head height  
 © ehouse. Unauthorised reproduction prohibited. Drawing ref. dig/8589289/SS

