



**32 Springett Way, Coxheath, Maidstone, ME17 4HQ**  
**Price £375,000**



\*\*\*CHAIN FREE\*\*\* THREE BEDROOM BUNGALOW IN A QUIET CUL DE SAC LOCATION

Located in a quiet cul-de-sac in Coxheath, this three-bedroom bungalow offers a practical living space without the hassle of a forward chain. Situated on the south side of Maidstone, Kent, the property enjoys convenient access to local amenities and public transport. Coxheath is well-regarded for its community atmosphere and accessibility to essential services. Within walking distance, residents have access to medical facilities and village shops including a butchers, bakers, and Tesco Express.

Internally, the bungalow provides spacious and adaptable accommodation. The entrance hall features useful cupboard storage, leading to a double-aspect lounge with a fireplace and sliding patio doors. The kitchen/diner and bathroom with separate W/C cater to practical living needs. Additionally, three well-proportioned bedrooms, two with built-in storage, offer comfortable living spaces.

Externally, the property features ample off-road parking via a driveway leading to a detached garage. The mature garden is neatly enclosed, with lawn areas, borders, and various trees. A summer house, greenhouse, and shed provide additional utility.

This excellent bungalow offers a functional living space in a desirable location. Call Page and Wells Loose Office today and book your viewing to avoid missing out.



**Entrance Hall**

**Lounge 15'8" x 12'0" (4.79m x 3.67m)**

**Kitchen/Dining Room 12'10" x 11'0" (3.92m x 3.36m)**

**Bedroom 1 11'10" x 10'10" (3.63m x 3.31m)**

**Bedroom 2 11'10" x 9'11" (3.63m x 3.04m)**

**Bedroom 3 10'10" x 6'10" (3.31m x 2.09m)**

**Bathroom**

**Separate WC**

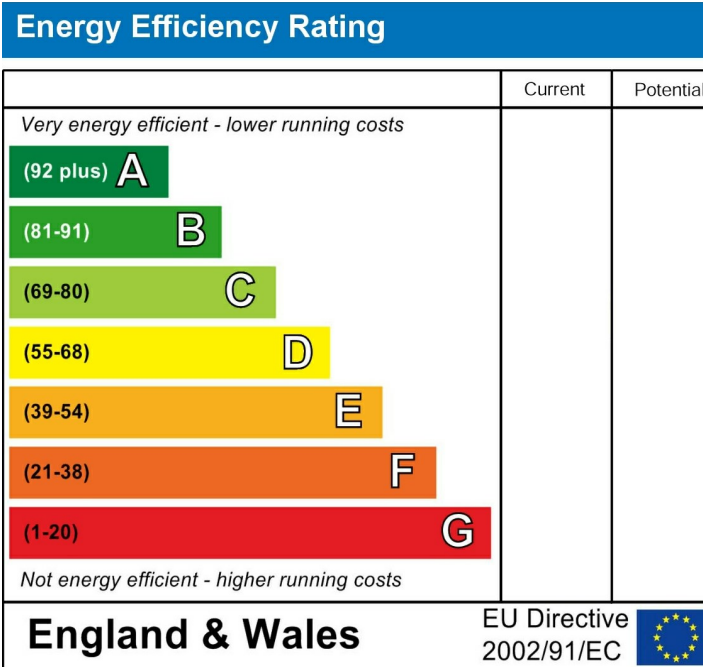
**EXTERNALLY**

**Garage 19'4" x 8'2" (5.90m x 2.50m)**

**Summer House 10'9" x 7'6" (3.29m x 2.29m)**

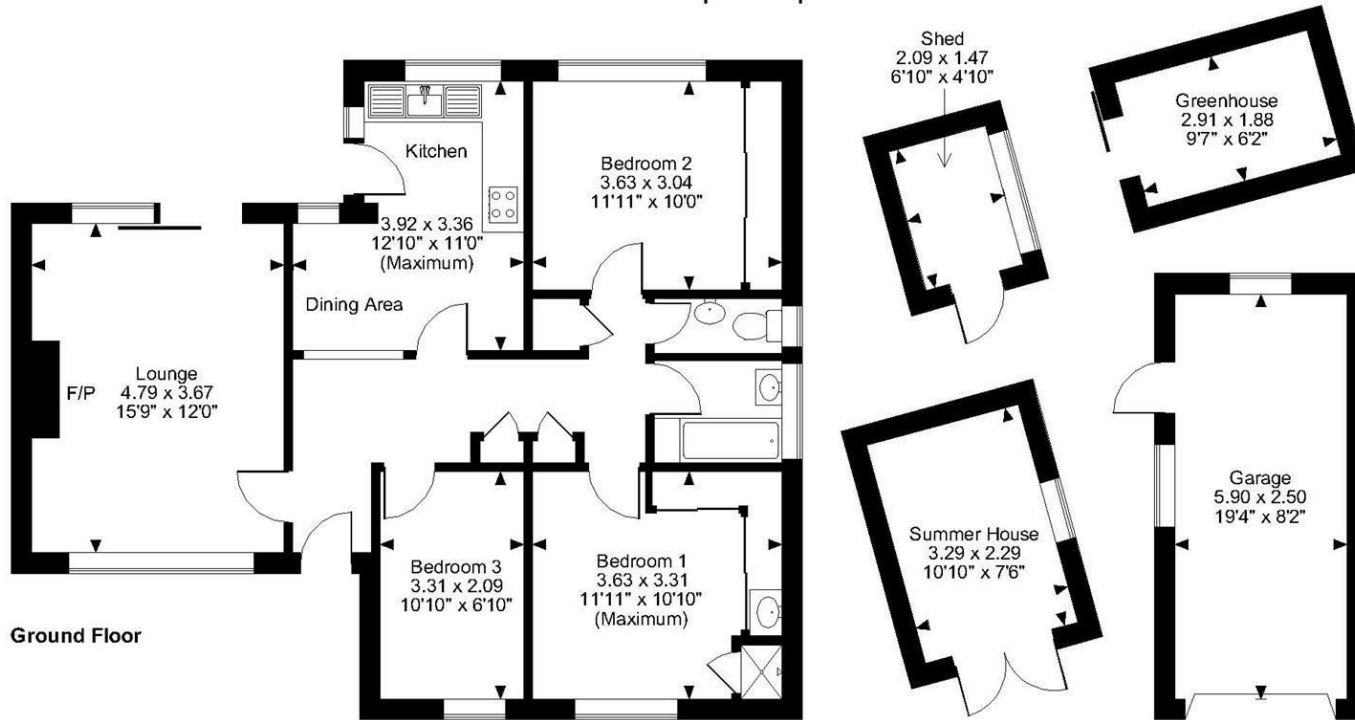
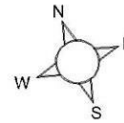
**Greenhouse 9'6" x 6'2" (2.91m x 1.88m)**

**Shed 6'10" x 4'9" (2.09m x 1.47m)**



Page & Wells limited for themselves and for the vendors of this property whose agents they are give notice that: 1. These particulars do not constitute any part of, an offer or a contract. 2. All statements contained in these particulars as to this property are made without responsibility on the part of Page & Wells Limited or the Vendor. 3. None of the statements contained in these particulars as to the property is to be relied on as statements or representations of fact. 4. Any intending purchaser must satisfy himself by inspection or otherwise as to the correctness of each of the statements contained in these particulars. 5. The vendor does not make or give, and neither Page & Wells Limited nor any person in their employment has any authority to make or give any representation whatsoever in relation to this property. These particulars are supplied on the understanding that all negotiations are carried out throughout Page & Wells Limited. Properties with a reference prefixes EAA are those which Page & Wells Limited disclose an interest in accordance with the provisions of the Estates Agents Act 1979

Springett Way, Coxheath, Maidstone, Kent  
 Approximate Gross Internal Area  
 Main House = 833 Sq Ft/77 Sq M  
 Garage = 159 Sq Ft/15 Sq M  
 Outbuildings = 173 Sq Ft/16 Sq M  
 Total = 1165 Sq Ft/108 Sq M



Ground Floor

**FOR ILLUSTRATIVE PURPOSES ONLY - NOT TO SCALE**

The position & size of doors, windows, appliances and other features are approximate only.  
 © ehouse. Unauthorised reproduction prohibited. Drawing ref. dig/8587313/SS

