



8 Saxon Way, Maidstone, ME15 6AL
Offers In Excess Of £1,000,000



EXECUTIVE FIVE BEDROOM DETACHED HOME

Nestled on the borders of the picturesque Loose Conservation Area, this exceptional detached family home offers luxury living amidst stunning natural beauty and tranquil countryside walks. Conveniently positioned, it provides easy access to essential amenities including the nearby Sainsbury's Local. The area offers a selection of highly regarded public and state schools such as Loose Primary School, Sutton Valance Preparatory School, and Maidstone Grammar Schools. Additionally, the bustling Maidstone Town Centre is just a short drive away, offering superb shopping and recreational facilities. For the commuter, high speed mainline services are available from Maidstone West with a journey time of approximately 45 minutes.

This impressive family home boasts spacious and versatile accommodation designed to meet the needs of modern living. The ground floor features a generous entrance hall, home office, inviting lounge, formal dining room, convenient cloakroom, and a functional utility room. The heart of the home lies in its high-quality kitchen/diner featuring a breakfast bar, integrated appliances, and ample kitchen units. The kitchen/diner seamlessly extends to the outdoors through bi-folding doors, opening onto a delightful garden patio, perfect for entertaining.

The accommodation comprises a luxurious main bedroom with an ensuite offering both a bath and separate shower unit, alongside a second bedroom also with ensuite facilities. Bedrooms three, four, and five share the main family bathroom, with the third bedroom thoughtfully converted into a walk-in dressing room.

Externally, a block paved driveway provides ample off road parking and leads to a detached double garage. The south facing private rear garden offers a tranquil retreat, complemented by a timber built hot tub shelter with an outdoor bar.

Contact Page and Wells Loose Office and arrange your viewing to avoid missing out



GROUND FLOOR

Entrance Hall

Lounge 16'4" x 13'10" (4.98m x 4.23m)

Kitchen/Breakfast Room 23'4" x 20'0" (7.12m x 6.11m)

Study 13'8" x 10'4" (4.19m x 3.15m)

Dining Room 13'11" x 13'1" (4.26m x 4.00m)

Utility Room

FIRST FLOOR

Landing

Bedroom 1 13'10" x 12'10" (4.23m x 3.93m)

En-Suite

Bedroom 2 13'1" x 11'7" (4.00m x 3.54m)

En-Suite

Bedroom 3 13'10" x 11'5" (4.23m x 3.50m)

Bedroom 4 12'8" x 11'2" (3.87m x 3.42m)

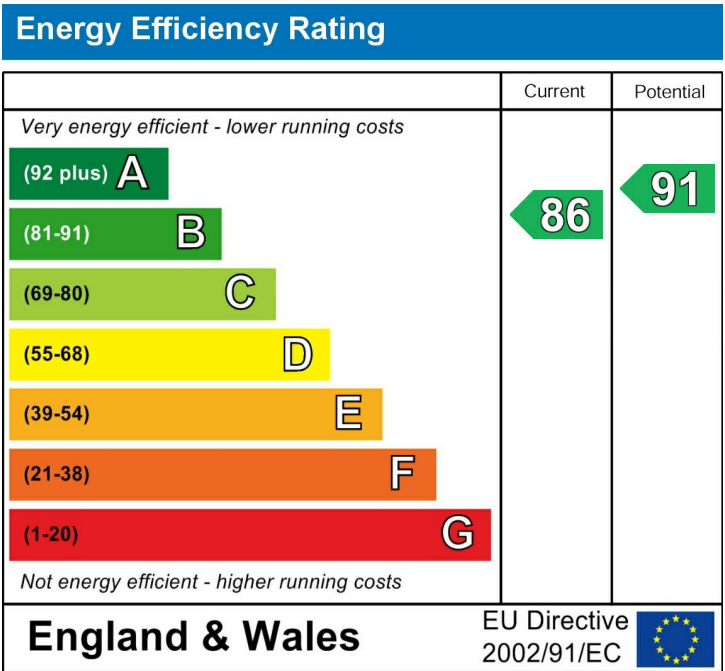
Bedroom 5 11'5" x 9'10" (3.50m x 3.02m)

Family Bathroom

EXTERNALLY

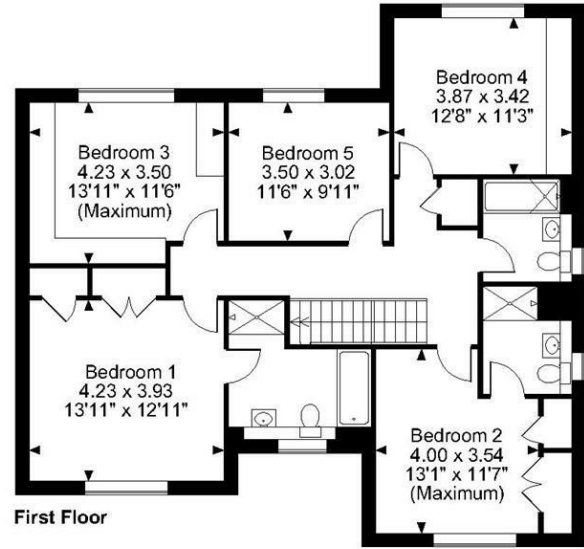
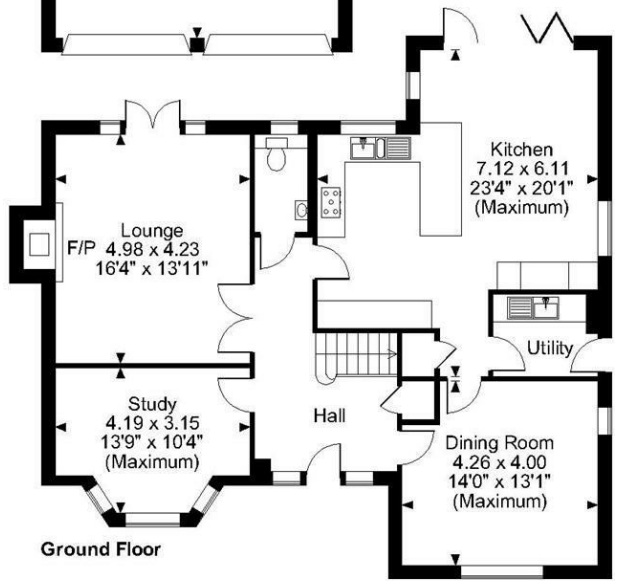
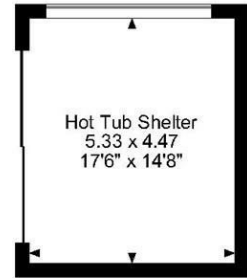
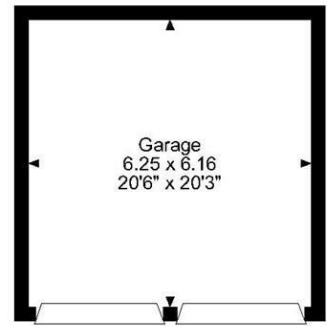
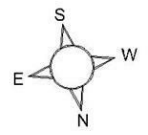
Garage 20'6" x 20'2" (6.25m x 6.16m)

Hot Tub Shelter 17'5" x 14'7" (5.33m x 4.47m)



Page & Wells limited for themselves and for the vendors of this property whose agents they are give notice that: 1. These particulars do not constitute any part of, an offer or a contract. 2. All statements contained in these particulars as to this property are made without responsibility on the part of Page & Wells Limited or the Vendor. 3. None of the statements contained in these particulars as to the property is to be relied on as statements or representations of fact. 4. Any intending purchaser must satisfy himself by inspection or otherwise as to the correctness of each of the statements contained in these particulars. 5. The vendor does not make or give, and neither Page & Wells Limited nor any person in their employment has any authority to make or give any representation whatsoever in relation to this property. These particulars are supplied on the understanding that all negotiations are carried out throughout Page & Wells Limited. Properties with a reference prefixes EAA are those which Page & Wells Limited disclose an interest in accordance with the provisions of the Estates Agents Act 1979

Saxon Way, Tovil, Maidstone, Kent
 Approximate Gross Internal Area
 Main House = 2249 Sq Ft/209 Sq M
 Garage = 414 Sq Ft/39 Sq M
 Hot Tub Shelter = 256 Sq Ft/24 Sq M
 Total = 2919 Sq Ft/272 Sq M



FOR ILLUSTRATIVE PURPOSES ONLY - NOT TO SCALE

The position & size of doors, windows, appliances and other features are approximate only.
 © ehouse. Unauthorised reproduction prohibited. Drawing ref. dig/8584727/TOW

