



Springhead Salts Lane, Loose, Maidstone, Kent, ME15 0BD
Price £975,000



*****RARELY AVAILABLE***CHARMING DETACHED 19TH CENTURY KENTISH RAGSTONE PROPERTY SITUATED IN THE DESIRABLE LOOSE CONSERVATION AREA**

This most fabulous period property retains many of original features, nestled on a generous plot in the sought after Loose Valley. The home offers a blend of classic charm with modern convenience. The ground floor features a welcoming reception hall, cosy sitting room with stunning fireplace and access to a south facing conservatory, a light filled kitchen breakfast room with wood burning stove, a useful home study, formal dining room, all with lovely views of the surrounding gardens. The lower ground floor presents a cellar with various possibilities for use. The first floor accommodates three well proportioned bedrooms with two bedrooms sharing the family bathroom and the main bedroom benefitting from an ensuite shower room with underfloor heating. Externally, the property is complemented by a sweeping driveway providing ample off road parking, beautiful gardens with a variety of trees, wild life, shrubs, flowers and a vegetable patch, and offering views over the Loose Valley Conservation Area. Noteworthy additions include a detached double garage and outside store.

Set in the charming Loose Conservation Area, this family home is ideally located being within walking distance of local amenities including Sainsbury's local and a variety of take away outlets. The general area is well served with a wide range of private and state schools catering for children of all ages including Dulwich Preparatory School, Sutton Valence, Bethany, Benenden as well as grammar schools in Maidstone and Tonbridge. For the commuter, Staplehurst Station is within easy reach offering frequent mainline services to London.

If you are on the market for a period home with an abundance of character in an impressive outdoor setting the call Page and Wells today and book your viewing to avoid missing out.



GROUND FLOOR

Entrance Hall

Lounge 13'5" x 12'3" (4.10m x 3.75m)

Study 10'6" x 9'1" (3.22m x 2.78m)

Music Room 13'5" x 12'3" (4.10m x 3.74m)

Dining Room 12'3" x 10'5" (3.74m x 3.19m)

Conservatory 12'9" x 10'4" (3.90m x 3.15m)

Kitchen 14'3" x 7'2" (4.36m x 2.19m)

W/C

Cellar 28'9" x 12'11" (8.77m x 3.94m)

FIRST FLOOR

Landing

Bedroom 1 13'5" x 12'3" (4.10m x 3.74m)

En-Suite

Bedroom 2 13'5" x 12'3" (4.10m x 3.75m)

Bedroom 3 12'3" x 10'5" (3.74m x 3.19m)

Family Bathroom

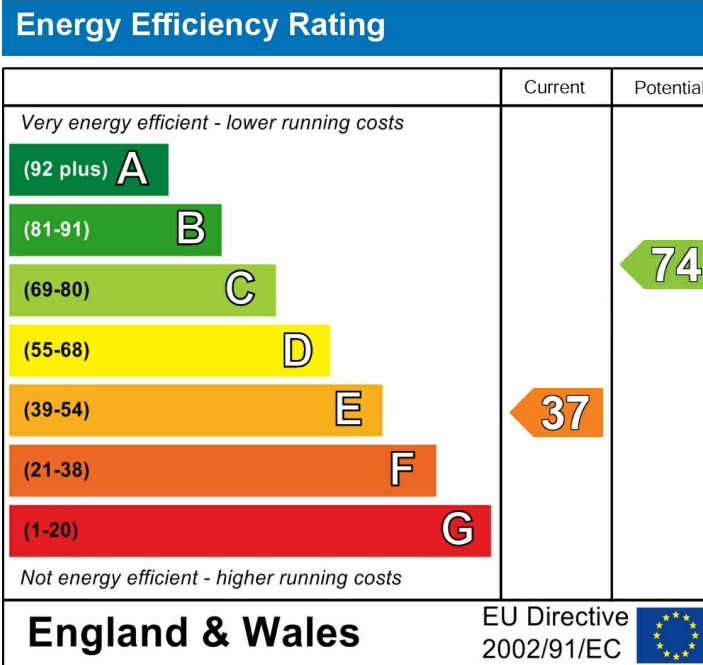
EXTERNALLY

Greenhouse 6'0" x 4'2" (1.84m x 1.28m)

Potting Shed 10'5" x 10'5" (3.19m x 3.19m)

Wendy House 8'0" x 5'11" (2.46m x 1.81m)

Garage 17'5" x 17'1" (5.33m x 5.22m)



Page & Wells limited for themselves and for the vendors of this property whose agents they are give notice that: 1. These particulars do not constitute any part of, an offer or a contract. 2. All statements contained in these particulars as to this property are made without responsibility on the part of Page & Wells Limited or the Vendor. 3. None of the statements contained in these particulars as to the property is to be relied on as statements or representations of fact. 4. Any intending purchaser must satisfy himself by inspection or otherwise as to the correctness of each of the statements contained in these particulars. 5. The vendor does not make or give, and neither Page & Wells Limited nor any person in their employment has any authority to make or give any representation whatsoever in relation to this property. These particulars are supplied on the understanding that all negotiations are carried out throughout Page & Wells Limited. Properties with a reference prefixes EAA are those which Page & Wells Limited disclose an interest in accordance with the provisions of the Estates Agents Act 1979

Springhead, Salts Lane Loose, Maidstone

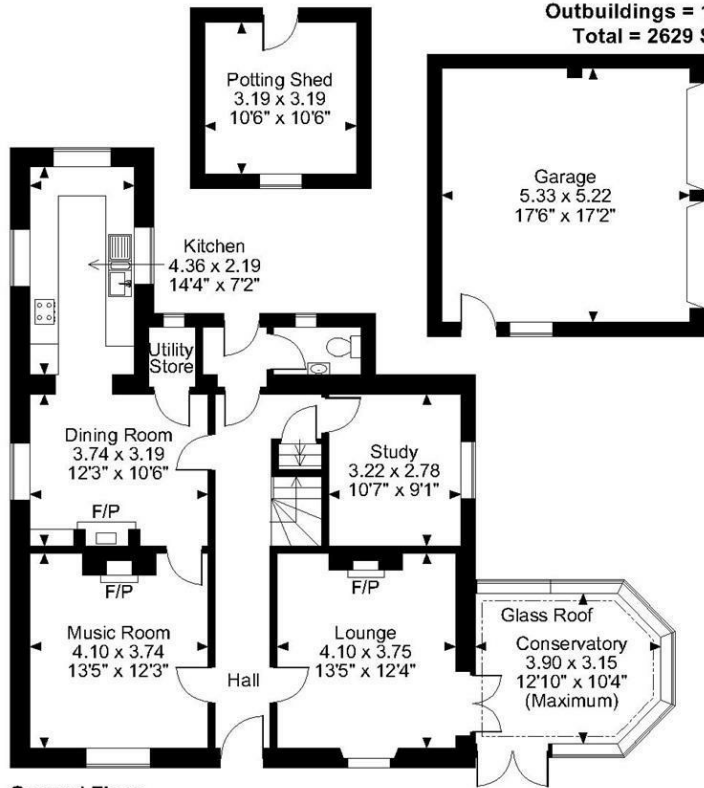
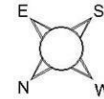
Approximate Gross Internal Area

Main House = 2147 Sq Ft/199 Sq M

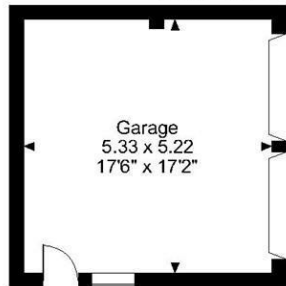
Garage = 299 Sq Ft/28 Sq M

Outbuildings = 183 Sq Ft/17 Sq M

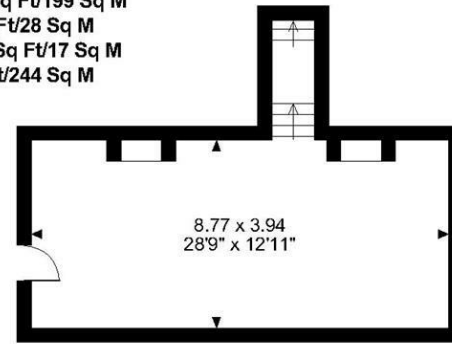
Total = 2629 Sq Ft/244 Sq M



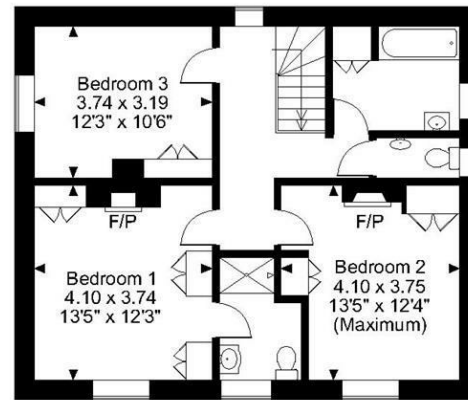
Ground Floor



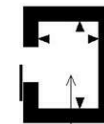
Garage
5.33 x 5.22
17'6" x 17'2"



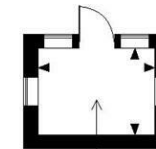
Cellar



First Floor



Greenhouse
1.84 x 1.28
6'0" x 4'2"



Wendy House
2.46 x 1.81
8'1" x 5'11"

FOR ILLUSTRATIVE PURPOSES ONLY - NOT TO SCALE

The position & size of doors, windows, appliances and other features are approximate only.

© ehouse. Unauthorised reproduction prohibited. Drawing ref. dig/8575367/SS

