



**1 Alchins Cottages Heath Road, Linton, Maidstone, Kent, ME17 4NT**  
**Offers In Excess Of £350,000**



This charming four-bedroom home is situated within the highly coveted Linton Village. Linton Village boasts a variety of picturesque countryside walking routes, a charming Church, and the renowned Bull Inn pub, which features a delightful garden with far reaching views of the surrounding countryside. The nearby village of Coxheath offers practical amenities such as Tesco Express, various take-away outlets, and a Post Office. Noteworthy schools include Coxheath Primary School and Cornwallis Academy. For the commuter, both Staplehurst and Marden Stations are conveniently accessible by a short drive with direct links to London

The home provides generously proportioned and adaptable living spaces spread across four floors. The lower ground floor encompasses a functional cellar, while the ground floor offers a dining area, kitchen, a spacious living room, and a ground floor bathroom. On the first floor there is the main bedroom a single bedroom currently used as an office and a convenient w/c. The second floor comprises two additional double bedrooms.

Outside, there is ample parking to the front and side of the property for four cars. The rear of the home offers a magnificent garden that stretches over 200 feet and enjoys a tranquil backdrop of open fields.

Given the size and flexibility of this property, we anticipate a high level of interest. To ensure you do not miss this exceptional opportunity, contact Page and Wells Loose Office to schedule a viewing.



**GROUND FLOOR**

**Entrance Hall**

**Lounge 11'11" x 11'3" (3.65m x 3.44m)**

**Dining Room 13'9" x 11'11" (4.21m x 3.65m)**

**Kitchen 15'1" x 7'1" (4.60m x 2.16m)**

**Bathroom**

**FIRST FLOOR**

**Bedroom 1 11'11" x 11'3" (3.65m x 3.44m)**

**Bedroom 4/Study 8'6" x 7'10" (2.60m x 2.41m)**

**SECOND FLOOR**

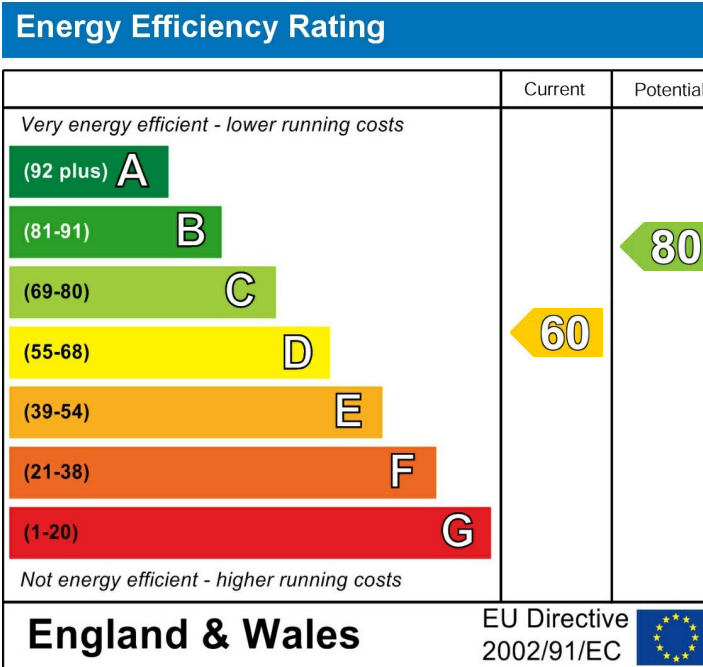
**Bedroom 2 13'9" x 11'11" (4.21m x 3.65m)**

**Bedroom 3 11'11" x 11'3" (3.65m x 3.44m)**

**EXTERNALLY**

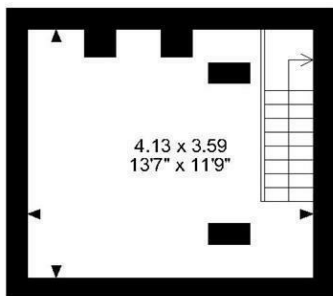
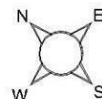
**Parking to the Front and Side**

**Over 200ft Rear Garden**

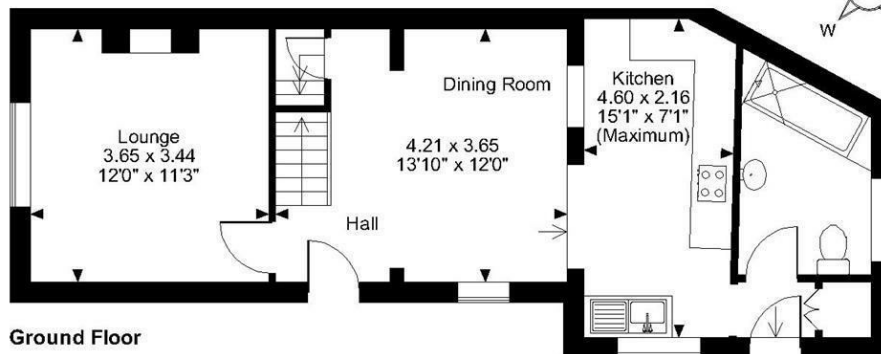


Page & Wells limited for themselves and for the vendors of this property whose agents they are give notice that: 1. These particulars do not constitute any part of, an offer or a contract. 2. All statements contained in these particulars as to this property are made without responsibility on the part of Page & Wells Limited or the Vendor. 3. None of the statements contained in these particulars as to the property is to be relied on as statements or representations of fact. 4. Any intending purchaser must satisfy himself by inspection or otherwise as to the correctness of each of the statements contained in these particulars. 5. The vendor does not make or give, and neither Page & Wells Limited nor any person in their employment has any authority to make or give any representation whatsoever in relation to this property. These particulars are supplied on the understanding that all negotiations are carried out throughout Page & Wells Limited. Properties with a reference prefixes EAA are those which Page & Wells Limited disclose an interest in accordance with the provisions of the Estates Agents Act 1979

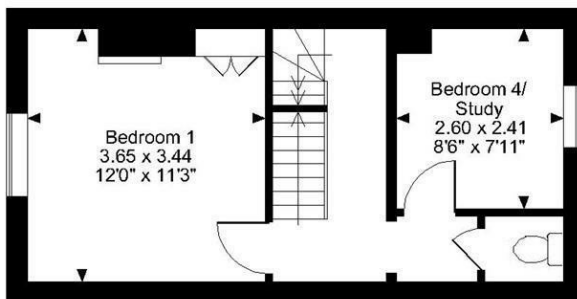
**Alchins Cottages, Heath Road, Linton, Maidstone**  
**Approximate Gross Internal Area**  
**1199 Sq Ft/111 Sq M**



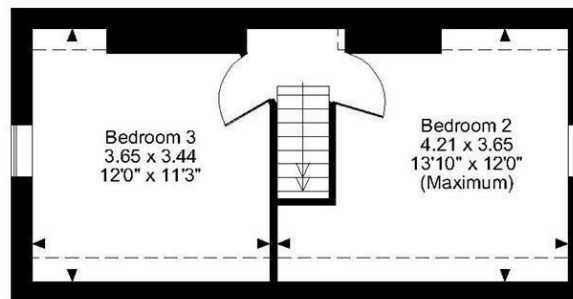
**Basement**



**Ground Floor**



**First Floor**



**Second Floor**

**FOR ILLUSTRATIVE PURPOSES ONLY - NOT TO SCALE**

The position & size of doors, windows, appliances and other features are approximate only.

--- Denotes restricted head height

© ehouse. Unauthorised reproduction prohibited. Drawing ref. dig/8575417/SLU

