



Gascoyne Close, Bearsted, Maidstone, , ME15 8EX

Guide Price £350,000



**** GUIDE PRICE £350,000 - £375,000 **** Introducing a delightful three-bedroom terraced house with a detached garage and driveway, nestled on a sought-after road in Bearsted, just moments from the scenic Len Valley nature reserve.

As you enter, you are greeted by a welcoming hallway that leads to a contemporary kitchen and a spacious sitting/dining area. This inviting space flows seamlessly into a conservatory that opens out onto a generous rear garden. Completing the ground floor is a convenient W.C.

On the first floor, you will find three well-proportioned bedrooms. The principal bedroom and the second bedroom both feature built-in wardrobes, and all three are served by a stylish family bathroom.

Outside, the front garden is lawned, with a path leading to the front door. The detached garage and driveway are conveniently located just a stone's throw from the property, accessible via a rear gate. The rear garden is thoughtfully designed with half laid to lawn and half decked over two tiers, offering plenty of space for entertaining and relaxation. Tenure: Freehold. Council Tax Band: D. EPC rating: C.



LOCATION

The property is located next to the charming Len Valley and Mallard's Park, which offer an array of recreational facilities, including lovely walking trails. The vibrant village of Bearsted provides a wide range of amenities, such as outstanding schools, shops, pubs, restaurants, cafe's, a parish church, a doctors' surgery, and a London line station. Additionally, residents benefit from easy access to the M20 and M2 motorways, while the picturesque grounds of both Leeds Castle and Mote Park are just a short distance away.

GROUND FLOOR

Entrance Hall

Sitting/Dining Room

Conservatory

Kitchen

W.C.

FIRST FLOOR

Landing

Bedroom One

Bedroom Two

Bedroom Three

Family Bathroom

Externally

Detached Garage

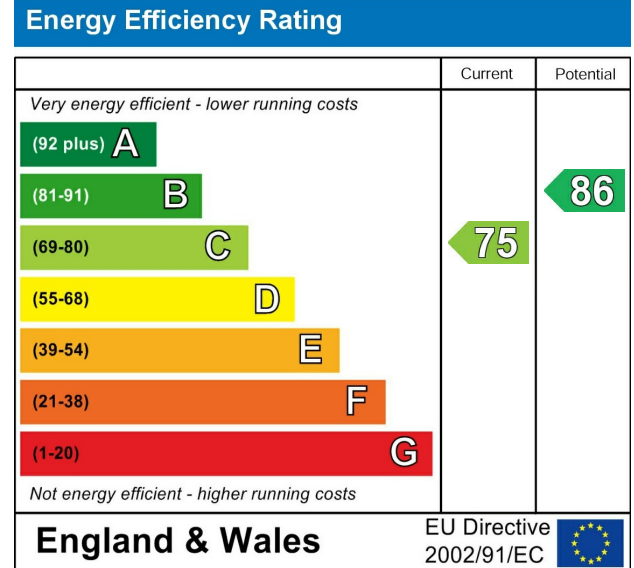
Driveway

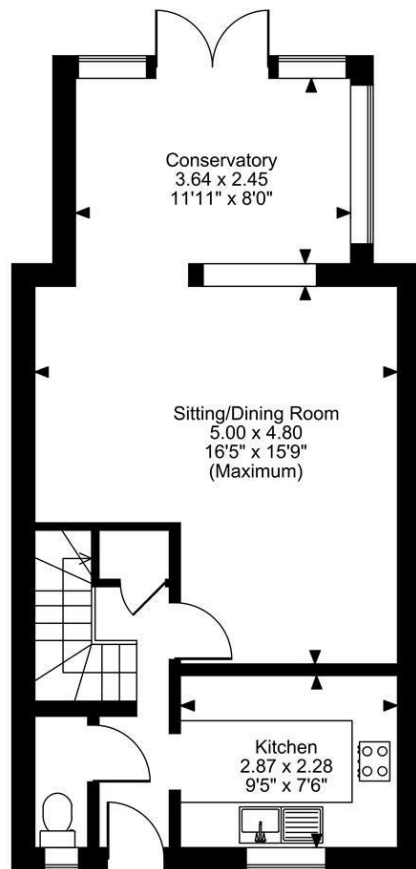
Front Garden

Rear Garden

VIEWING

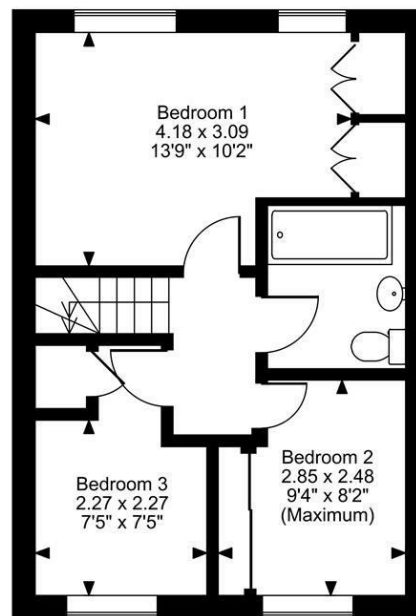
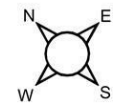
Strictly by arrangement with the Agent's Bearsted Office, 132 Ashford Road, Bearsted, Maidstone, Kent ME14 4LX. Tel: 01622 739574.



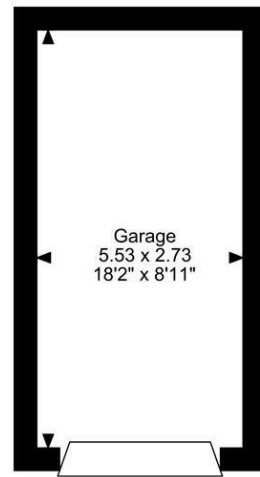


Ground Floor

Gascoyne Close, Bearsted, Maidstone
Approximate Gross Internal Area
Main House = 879 Sq Ft/82 Sq M
Garage = 163 Sq Ft/15 Sq M
Total = 1042 Sq Ft/97 Sq M



First Floor



FOR ILLUSTRATIVE PURPOSES ONLY - NOT TO SCALE
 The position & size of doors, windows, appliances and other features are approximate only.
 © ehouse. Unauthorised reproduction prohibited. Drawing ref. dig/8661689/TOW

