



Discovery Road, Bearsted, Maidstone, , ME15 8HF

Price £825,000



Nestled on the sought-after Discovery Road in Bearsted, Maidstone, this impressive detached house offers a perfect blend of space, comfort, and modern living. Spanning an expansive 2,038 square feet in total, this five-bedroom residence is ideal for families seeking a spacious home in a tranquil setting.

Upon entering, you are greeted by an inviting entrance hall with convenient cloakroom, leading to three generous reception rooms, including a charming sitting room, a formal dining room, and a versatile office, perfect for working from home, or use as a gym. The kitchen/breakfast room adjoins a rear hall with access to a W.C., utility room, and provides access to the integral garage ensuring convenience for daily living. Upstairs, you will find five bedrooms, with the principal benefitting from a space en-suite, whilst the remainder have used of the family bathroom.

Set on a large plot, the home features a beautifully established private rear garden, providing a serene outdoor space for relaxation and entertaining. The front garden is lawned, enhancing the property's curb appeal, while a double-width driveway to the side offers ample parking for up to four vehicles, leading to a double garage for additional storage or vehicle accommodation.

This delightful home is not only spacious but also situated in a desirable location, making it an excellent choice for those looking to enjoy the best of Bearsted living. With its combination of modern amenities and charming features, this property is sure to impress. Don't miss the opportunity to make this wonderful house your new home. Tenure: Freehold. Council Tax Band: G. EPC rating: C.



LOCATION

The property is conveniently located to take advantage of local amenities within Bearsted including local shops and doctors surgery. There are excellent transport links via the nearby mainline train station and easy access to the M20 & M2 motorways together with close proximity to the superb Thurnham, Roseacre & Madginford schools, the picturesque village green with a choice of cafe's, pubs and restaurants. Leisure facilities include golf, bowls and tennis clubs, nearby leisure centres, whilst the beautiful grounds of both Leeds Castle and Mote park are nearby.

GROUND FLOOR

Entrance Hall

Cloakroom

Sitting Room

Dining Room

Office

Kitchen/Breakfast Room

Utility Room

W.C.

FIRST FLOOR

Landing

Principal Bedroom

En-suite Bathroom

Bedroom Two

Bedroom Three

Bedroom Four

Bedroom Five

Family Bathroom

EXTERNALLY

Front Garden

Driveway


Double Garage

Rear Garden

VIEWING

Strictly by arrangement with the Agent's Bearsted Office, 132 Ashford Road, Bearsted, Maidstone, Kent ME14 4LX . Tel: 01622 739574.

Energy Efficiency Rating

	Current	Potential
Very energy efficient - lower running costs		
(92 plus) A		
(81-91) B		
(69-80) C	74	81
(55-68) D		
(39-54) E		
(21-38) F		
(1-20) G		
Not energy efficient - higher running costs		
England & Wales	EU Directive 2002/91/EC	

Discovery Road, Bearsted, Maidstone, Kent

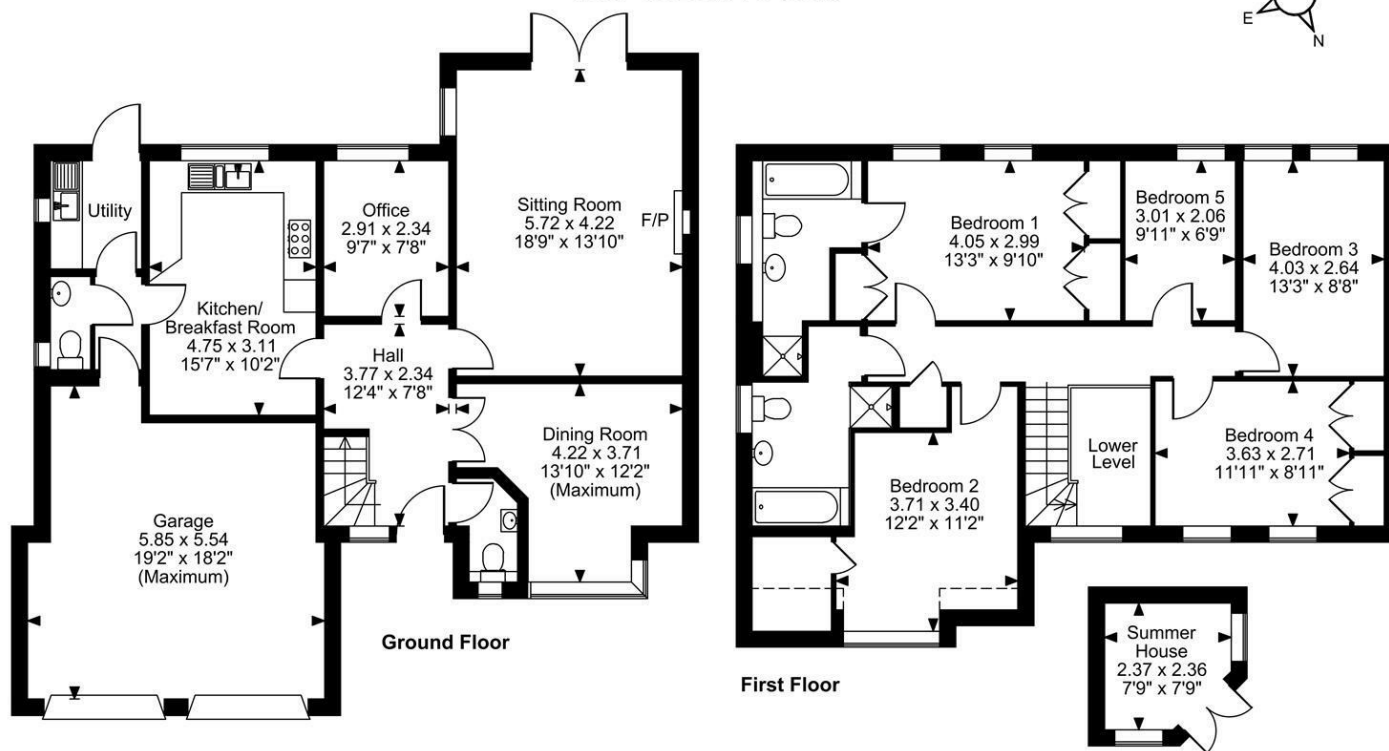
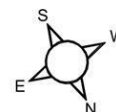
Approximate Gross Internal Area

Main House = 1732 Sq Ft/161 Sq M

Garage = 306 Sq Ft/28 Sq M

Summer House = 54 Sq Ft/5 Sq M

Total = 2092 Sq Ft/194 Sq M



FOR ILLUSTRATIVE PURPOSES ONLY - NOT TO SCALE

The position & size of doors, windows, appliances and other features are approximate only.

□ □ □ Denotes restricted head height

© ehous. Unauthorised reproduction prohibited. Drawing ref. dig/8649832/SS

