



**Pennine Way, Downswood, Maidstone, , ME15 8UG**  
**Offers In Excess Of £475,000**





Presenting an exceptional four-bedroom, two bathroom detached residence nestled in the sought-after development of Downswood, Maidstone.

As you approach the property, a spacious driveway leads you to the welcoming front door, revealing a bright and airy hallway that features a convenient WC. The cosy sitting room seamlessly transitions into the generous dining room through elegant bi-fold doors, which open up to the enchanting garden through French doors at the rear. The contemporary galley kitchen is equipped with ample cupboard space and offers a generous layout, large enough to accommodate an American-style fridge/freezer, leading into a delightful conservatory that connects to a versatile office/playroom, an innovative conversion of part of the former garage. On the upper level, you will find four well-proportioned bedrooms, with the principal suite enjoying the luxury of a modern en-suite shower room, while the remaining three bedrooms share a stylish family bathroom.

Externally, the property boasts a substantial concrete imprinted driveway with parking for up to five vehicles, along with a convenient storage area featuring an electric roller shutter door, part of the former garage. The low-maintenance rear garden is an entertainer's dream, complete with an inviting seating area perfect for gatherings, a generous expanse of artificial lawn bordered by vibrant flower planters, and an additional patio with a modern pergola, providing an idyllic setting for entertaining. Tenure: Freehold. EPC Rating: C. Council Tax Band: E.



## LOCATION

Downswood is served by a small parade of shops and is within close proximity of the reputable Madginford Primary, Thurnham Infants and Roseacre Junior Schools. The picturesque village centre of Bearsted is close by where there is a delightful Green, surrounded by historic buildings, sports/leisure clubs, pubs, cafe's, restaurants, parish church and London line station. The beautiful grounds of Mote Park are within walking distance, and there is a frequent bus service to Maidstone town centre, which is approximately 3-miles distance.

## ACCOMMODATION

### Ground Floor:

Entrance Hall

Cloakroom

Sitting Room

Dining Room

Kitchen

Conservatory

Office/Playroom

### First Floor:

## Principal Bedroom

• En-suite Shower Room

Bedroom Two

Bedroom Three

Bedroom Four

Family Bathroom

## EXTERNALLY

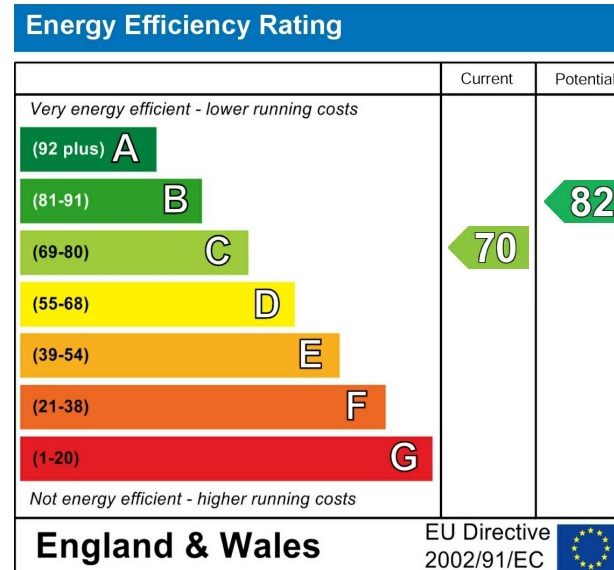
Driveway

Store

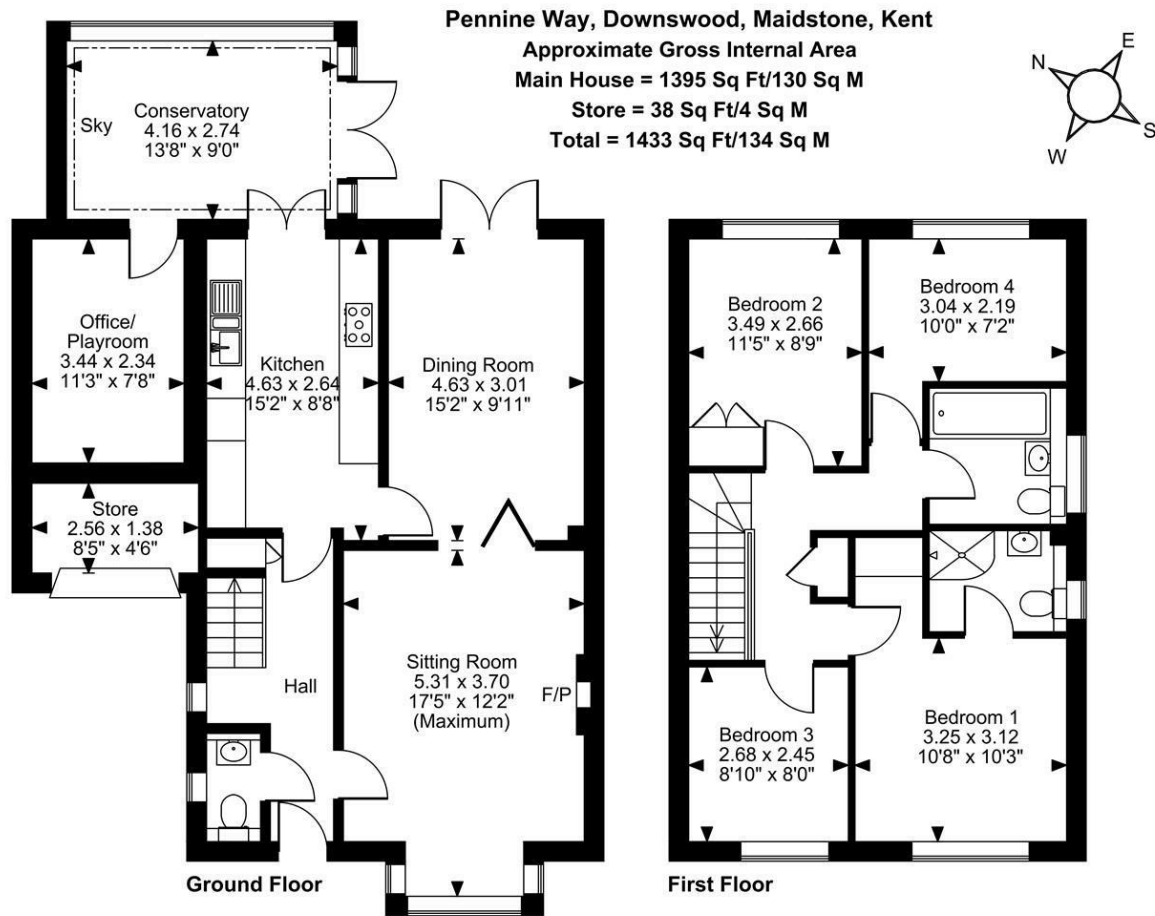
Rear Garden

## VIEWING

Strictly by arrangement with the Agent's Bearsted  
Office: 132 Ashford Road, Bearsted, Maidstone, Kent  
ME14 4LX. Tel: 01622 739574.







**FOR ILLUSTRATIVE PURPOSES ONLY - NOT TO SCALE**

The position & size of doors, windows, appliances and other features are approximate only.

© ehouse. Unauthorised reproduction prohibited. Drawing ref. dig/8648470/SS

