



**Birling Avenue, Bearsted, Maidstone, , ME14 4AT**

**Offers In Excess Of £575,000**





This spacious link-detached family house is situated in a sought after established position enjoying a secluded 60' approx. rear garden. The light and airy rooms are approached by an imposing entrance hall and features 4 double bedrooms, spacious landing and modern bathroom. It has gas warm air central heating and double glazed windows and doors throughout. There is a full sized garage and parking facilities for two vehicles. NO FORWARD CHAIN. Tenure: Freehold. EPC Rating: D. Council Tax Band: F.



## LOCATION

The popular village of Bearsted has a wide range of amenities including excellent shops, pubs, restaurants, schools, leisure facilities, picturesque village green and London line station. Mote Park, a local beauty spot, is close by where fine recreational facilities are available.

## ACCOMMODATION

**Ground Floor:**

**Entrance Hall**

**Cloakroom**

**Sitting Room**

**Dining Room**

**Kitchen**

**First Floor:**

**Bedroom One**

**Bedroom Two**

**Bedroom Three**

**Bedroom Four**

**Family Bathroom**

## EXTERNALLY

**Front Garden**

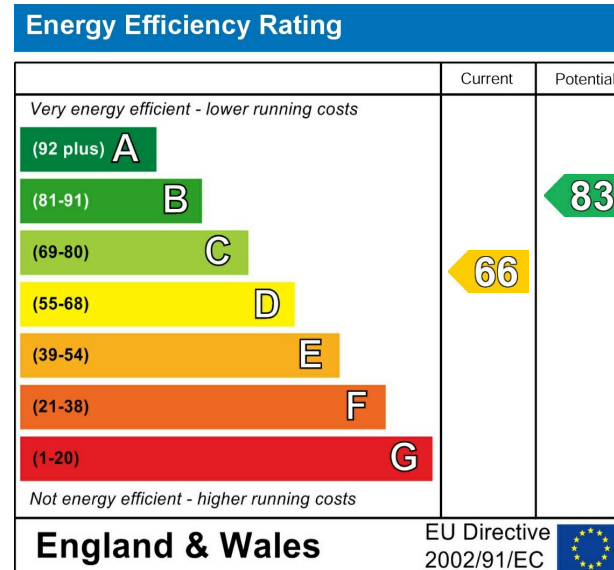
**Driveway**

**Garage**

**Rear Garden**

## VIEWING

Strictly by arrangement with the Agent's Bearsted Office, 132 Ashford Road, Bearsted, Maidstone, Kent ME14 4LX. Tel: 01622 739574.



Page & Wells limited for themselves and for the vendors of this property whose agents they are give notice that: 1. These particulars do not constitute any part of, an offer or a contract. 2. All statements contained in these particulars as to this property are made without responsibility on the part of Page & Wells Limited or the Vendor. 3. None of the statements contained in these particulars as to the property is to be relied on as statements or representations of fact. 4. Any intending purchaser must satisfy himself by inspection or otherwise as to the correctness of each of the statements contained in these particulars. 5. The vendor does not make or give, and neither Page & Wells Limited nor any person in their employment has any authority to make or give any representation whatsoever in relation to this property. These particulars are supplied on the understanding that all negotiations are carried out throughout Page & Wells Limited. Properties with a reference prefixes EAA are those which Page & Wells Limited disclose an interest in accordance with the provisions of the Estates Agents Act 1979



**Birling Avenue, Bearsted, Maidstone, Kent**

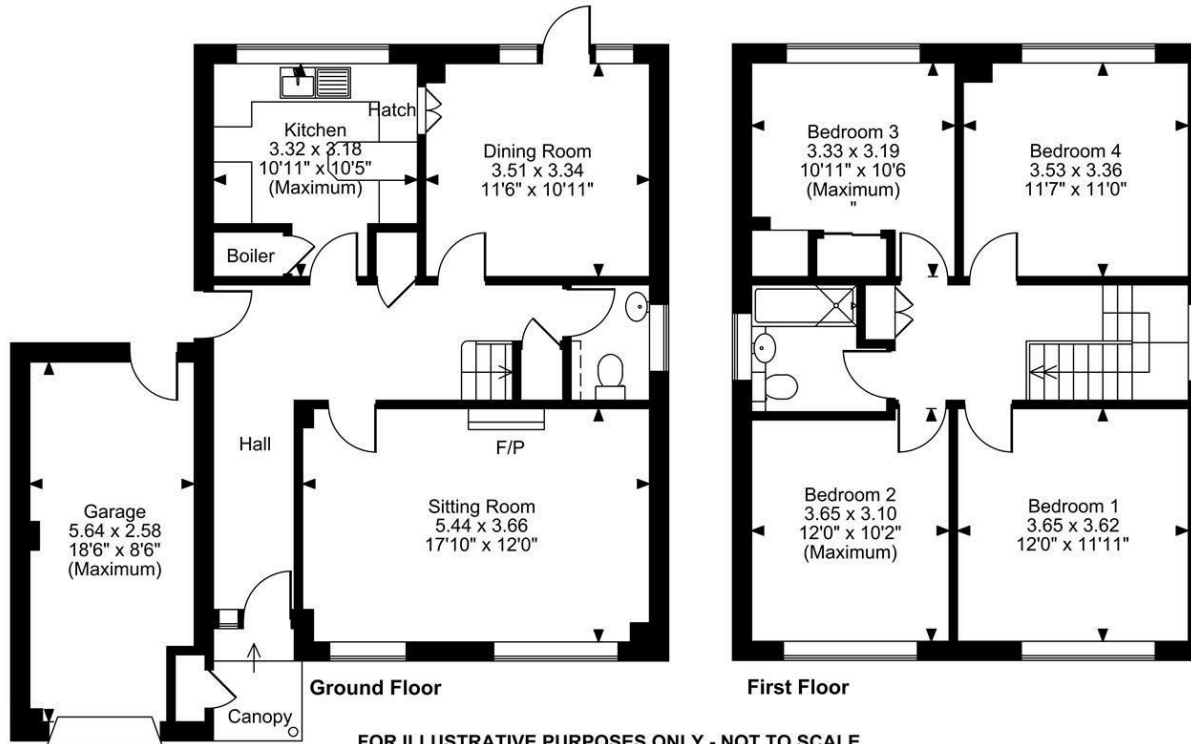
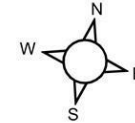
**Approximate Gross Internal Area**

**Main House = 1325 Sq Ft/123 Sq M**

**Garage = 151 Sq Ft/14 Sq M**

**Total = 1476 Sq Ft/137 Sq M**

Quoted Area Excludes 'External C/B'



**FOR ILLUSTRATIVE PURPOSES ONLY - NOT TO SCALE**

The position & size of doors, windows, appliances and other features are approximate only.

□□□ Denotes restricted head height

© ehous. Unauthorised reproduction prohibited. Drawing ref. dig/8646247/SS

