



Willington Street, Maidstone, , ME15 8ED
Offers In The Region Of £550,000



Los Zancos is a unique detached contemporary style property directly overlooking Mote Park, a local beauty spot with a lake.

The property is approximately 65 years old and set back from Willington Street with extensive parking for 4-5 vehicles plus a double garage and double carport. The accommodation is of good size and features an attractive living room with balcony overlooking the park. It has the benefit of gas fired central heating and mainly double glazed windows.

Situated in a convenient position close to schools and shops. Maidstone, the county town of Kent, is approximately 3.5 miles distance. The adjoining village of Bearsted also has excellent facilities including a picturesque Green, leisure facilities and London line station. The property is situated on a good sized plot. The rear garden is laid mainly to lawn with various trees, shrubs and flower borders, and has a depth of approximately 50'. Paved area and canopy. The front garden comprises numerous trees and shrubs. NO FORWARD CHAIN. Tenure: Freehold. EPC Rating: E. Council Tax Band: E.



ACCOMMODATION

Ground Floor:

Entrance Hall

Toilet

Utility Room

Garden Room

First Floor:

Landing

Living Room

Kitchen

Bedroom One

Bedroom Two

Bedroom Three

Bedroom Four/Study

Bathroom

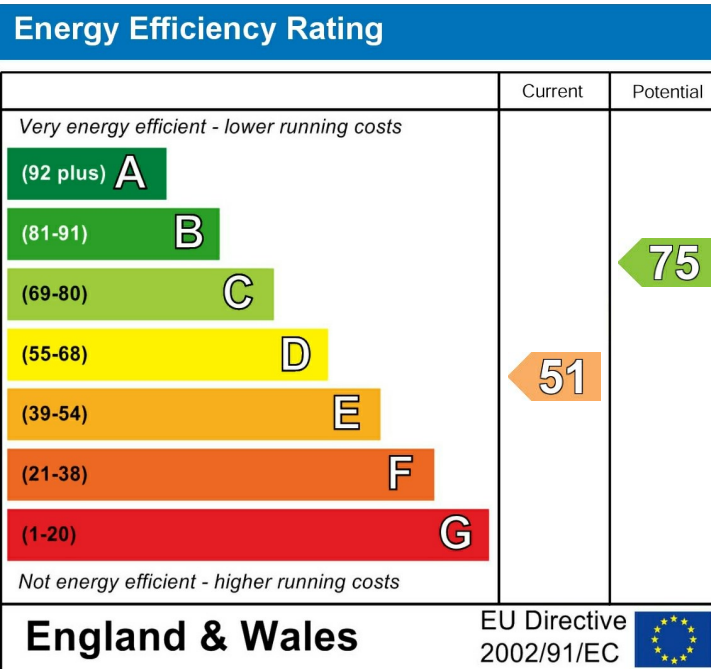
EXTERNALLY

Double Garage

Double Carport

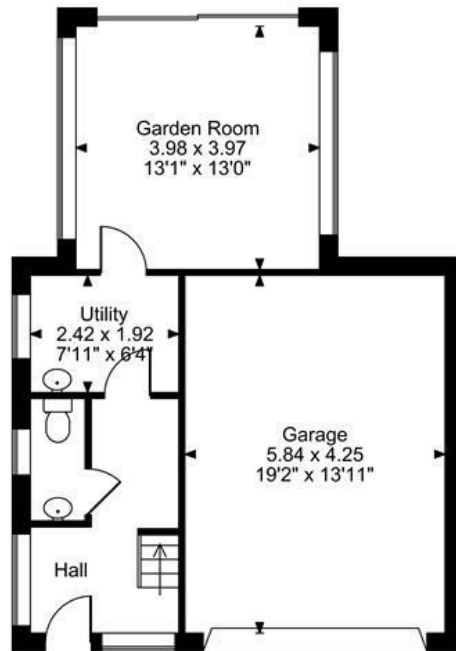
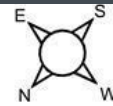
VIEWING

Strictly by arrangement with the Agent's Bearsted
Office, 132 Ashford Road, Bearsted, Maidstone, Kent
ME14 4LX. Tel: 01622 739574.

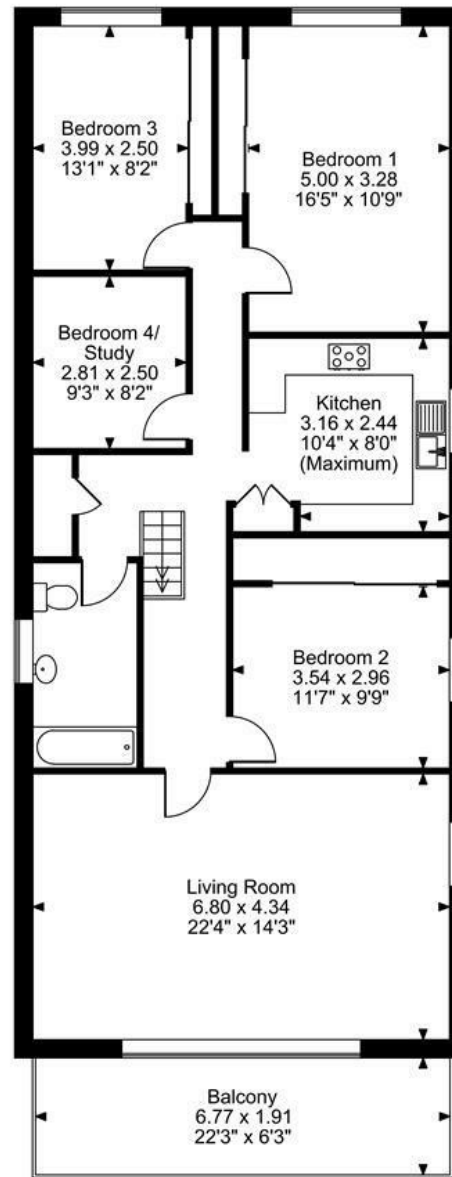


Page & Wells limited for themselves and for the vendors of this property whose agents they are give notice that: 1. These particulars do not constitute any part of, an offer or a contract. 2. All statements contained in these particulars as to this property are made without responsibility on the part of Page & Wells Limited or the Vendor. 3. None of the statements contained in these particulars as to the property is to be relied on as statements or representations of fact. 4. Any intending purchaser must satisfy himself by inspection or otherwise as to the correctness of each of the statements contained in these particulars. 5. The vendor does not make or give, and neither Page & Wells Limited nor any person in their employment has any authority to make or give any representation whatsoever in relation to this property. These particulars are supplied on the understanding that all negotiations are carried out throughout Page & Wells Limited. Properties with a reference prefixes EAA are those which Page & Wells Limited disclose an interest in accordance with the provisions of the Estates Agents Act 1979

Willington Street, Maidstone, Kent
 Approximate Gross Internal Area
 Main House = 1536 Sq Ft/143 Sq M
 Garage = 267 Sq Ft/25 Sq M
 Balcony external area = 139 Sq Ft/13 Sq M
 Total = 1803 Sq Ft/168 Sq M



Ground Floor



First Floor

FOR ILLUSTRATIVE PURPOSES ONLY - NOT TO SCALE

The position & size of doors, windows, appliances and other features are approximate only.
 © ehouse. Unauthorised reproduction prohibited. Drawing ref. dig/8641055/TOW

