



**The Landway, Bearsted, Maidstone, , ME14 4BE**  
**Offers In The Region Of £775,000**





Explore this wonderful opportunity to acquire a four bedroom detached family home, situated on a sizable plot spanning 0.28 acres, with significant potential for expansion and the possibility of building an additional dwelling at the rear, subject to planning permission.

The property features a walled and block-paved driveway that can accommodate up to seven vehicles. Upon entering through the solid wood front door, you will find a welcoming entrance hall that leads to a spacious sitting room with sliding patio doors to the side garden, a generous dining room, a kitchen overlooking the rear garden, and a convenient downstairs shower room. Upstairs, the spacious landing offers stunning views of the North Downs, leading to four comfortable double bedrooms, as well as a dressing room or nursery connected to the principal. A family bathroom and separate WC serve all bedrooms and can potentially be combined into a larger bathroom with both a bath and shower.

Outside, the front garden features a lawn bordered by mature shrubs for added privacy. The large side garage, equipped with an electric roller shutter door, provides parking for at least two vehicles and extra storage. The tiered rear garden, with its lawned area and mature borders, offers potential for development or multi-generational living, pending planning approval.

This rare opportunity to make this house your family's forever home is not to be missed. NO FORWARD CHAIN. Tenure: Freehold. EPC Rating: D. Council Tax Band: G.



## LOCATION

The property is superbly positioned to take full advantage of all local amenities within Bearsted, including the close proximity to the renowned Thurnham Junior & Roseacre Primary schools, being just a 10 minute walk from the picturesque Village Green with a selection of gastro pubs, cafe's and restaurants. The excellent transport links include mainline train station into Victoria and access to the M2 & M20 motorways. Leisure facilities include Bearsted golf, bowls and tennis clubs, whilst the beautiful grounds of both Leeds Castle and Mote Park are also close by.

## ACCOMMODATION

### Ground Floor:

Entrance Hall

Shower Room

Sitting Room

Dining Room

Kitchen

### First Floor:

Principal Bedroom

• Dressing Room

Bedroom Two

Bedroom Three

Bedroom Four

Bathroom

Separate WC

EXTERNALLY

Front Garden

Driveway

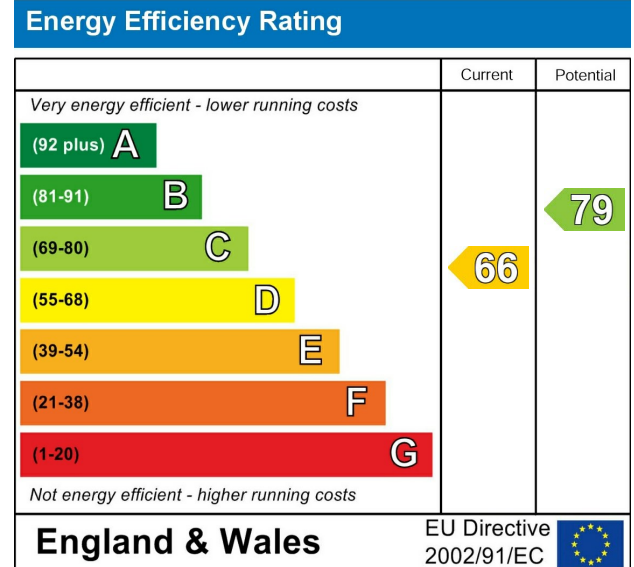
Garage

Rear Garden

Summerhouse

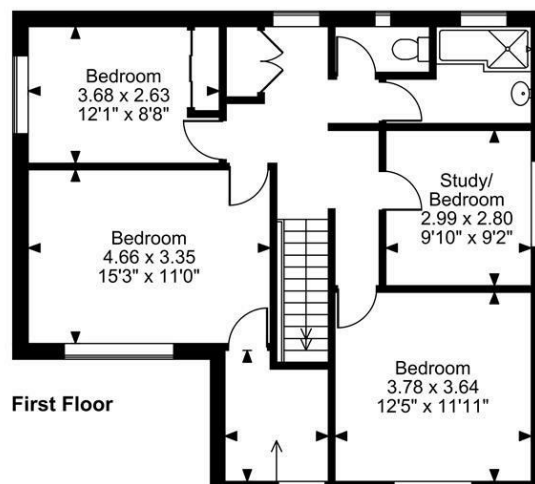
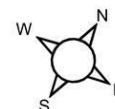
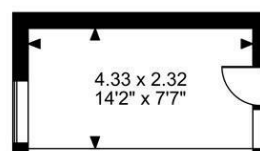
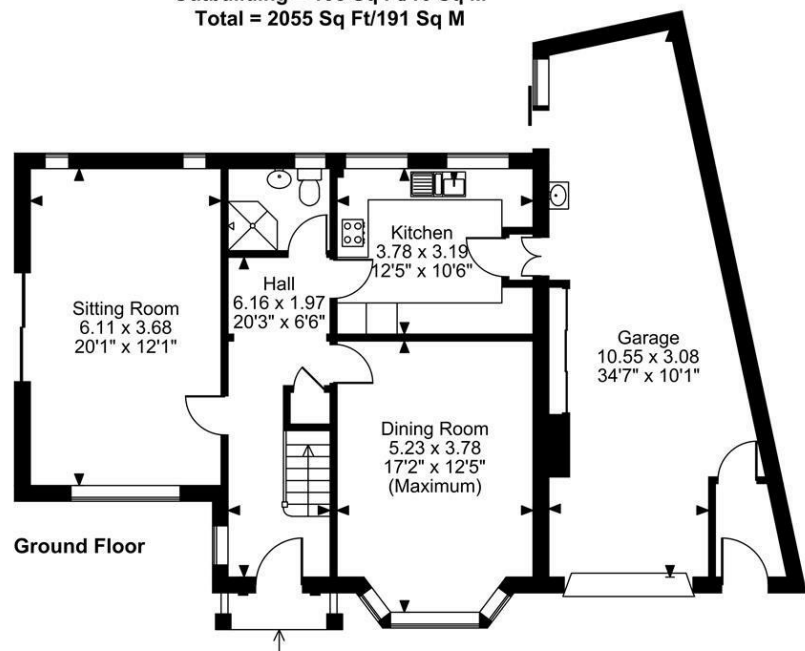
## VIEWING

Strictly by arrangement with the Agent's Bearsted Office: 132 Ashford Road, Bearsted, Maidstone, Kent ME14 4LX. Tel: 01622 739574.





**The Landway, Bearsted, Maidstone, Kent**  
**Approximate Gross Internal Area**  
**Main House = 1555 Sq Ft/145 Sq M**  
**Garage = 392 Sq Ft/36 Sq M**  
**Outbuilding = 108 Sq Ft/10 Sq M**  
**Total = 2055 Sq Ft/191 Sq M**



Dressing Room  
 2.52 x 1.99  
 8'3" x 6'6"  
 (Maximum)

**FOR ILLUSTRATIVE PURPOSES ONLY - NOT TO SCALE**

The position & size of doors, windows, appliances and other features are approximate only.  
 © ehouse. Unauthorised reproduction prohibited. Drawing ref. dig/8635175/SS

