



4 Mote Villas The Green, Bearsted, Maidstone, Kent, ME14 4EB
Price £800,000

Discover this stunning semi-detached Victorian villa, ideally located overlooking the picturesque Bearsted Village Green. This exquisite home harmoniously blends contemporary elegance with timeless period features, such as intricate picture rails and beautiful fireplaces, and boasts a substantial later extension that provides spacious and well-presented accommodation.

Accessed through an enchanting wrought iron gate, a block-paved pathway leads to the inviting front door. Upon entry, you are greeted by a bright hallway that flows into a sophisticated sitting room featuring a cozy log burner, built-in storage, and a delightful window seat. The heart of the home offers a charming family room with an exposed brick fireplace, leading to a bespoke open-plan kitchen/dining area with elegant granite work surfaces. The bi-fold doors open to an inviting patio, perfect for outdoor entertaining. Additionally, a modern shower room completes the ground floor.

Upstairs, you will find four generous double bedrooms, with the principal boasting stunning views over Bearsted Green and a period fireplace. The second bedroom also features an attractive fireplace, while the other two bedrooms offer pleasant aspects and are served by a traditional family bathroom.

Externally, the front garden is lushly laid to lawn with beautiful shrub borders, while the rear garden invites entertaining with a spacious patio, a well-kept lawn, a side access with store to side, and a pathway leading to a parking area and shed. This exceptional Victorian villa combines the charm of village life with modern comfort, making it a remarkable place to call home. Tenure: Freehold. EPC Rating: D. Council Tax Band: F.



LOCATION

The property is ideally positioned on the highly desirable Green, in the heart of Bearsted, providing excellent access to London via the mainline train station and the M20 motorway. It is also conveniently close to top-rated schools, including Sutton Valence private school, local grammar schools, and the prestigious Thurnham and Roseacre junior schools. The charming Village Green has a fantastic selection of gastro pubs and restaurants. Residents can enjoy a range of leisure activities at Bearsted's golf, bowls, and tennis clubs. Additionally, the breath-taking landscapes of The Woodland Trust, Leeds Castle, and Mote Park are all within easy reach, further enhancing the appeal of this exceptional location.

ACCOMMODATION

Ground Floor:

Entrance Hall

Shower Room

Sitting Room

Family Room

Kitchen/Breakfast/Dining Room

First Floor:

Bedroom 1

Bedroom 2

Bedroom 3

Bedroom 4

Family Bathroom

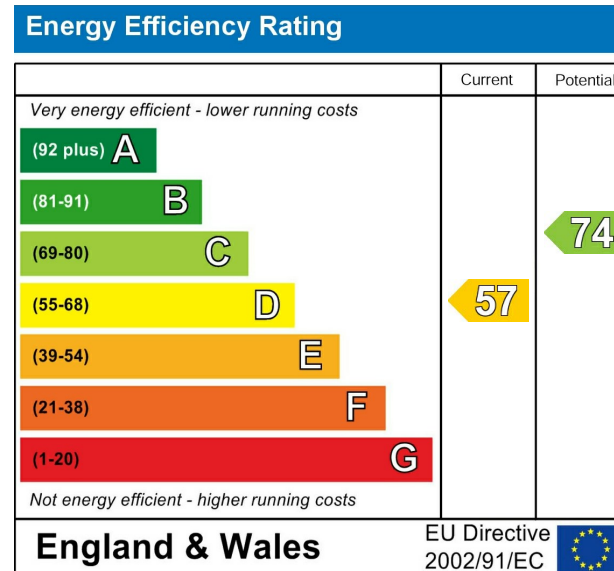
EXTERNALLY

Front & Rear Gardens

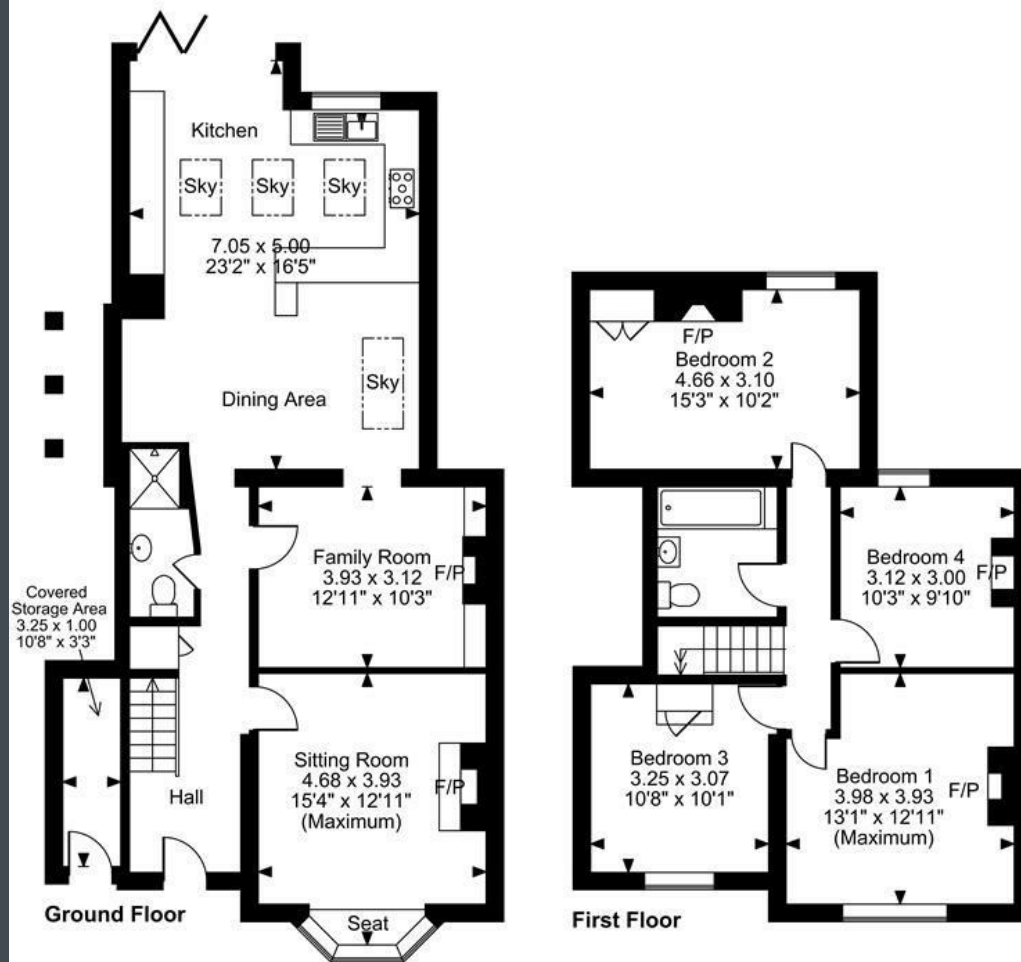
Parking Bay to Rear

VIEWING

Strictly by arrangement with the Agent's Bearsted
Office: 132 Ashford Road, Bearsted, Maidstone, Kent
ME14 4LX. Tel: 01622 739574.



The Green, Bearsted, Maidstone, Kent
Approximate Gross Internal Area
Main House = 1524 Sq Ft/142 Sq M
Covered Storage Area = 35 Sq Ft/3 Sq M
Total = 1559 Sq Ft/145 Sq M



FOR ILLUSTRATIVE PURPOSES ONLY - NOT TO SCALE

The position & size of doors, windows, appliances and other features are approximate only.
 © ehouse. Unauthorised reproduction prohibited. Drawing ref. dig/8629084/LCO

