



Caris Brooke Lakelands, Harrietsham, Maidstone, Kent, ME17 1AR
Offers In Excess Of £625,000



This remarkable bungalow is a detached residence located in a prime position in Harrietsham, boasting an exceptionally large and secluded rear garden spanning approximately one third of an acre. The property features well-designed and spacious interiors, including a generous double aspect lounge with French doors leading to the rear garden, a double aspect dining room, a modern fitted kitchen with breakfast bar, a contemporary bathroom, stylish oak internal doors, and tasteful décor throughout.

The property benefits from ample parking with a driveway large enough to accommodate 4 vehicles, plus a detached garage.

Situated in the sought-after village of Harrietsham, the property benefits from convenient access to various amenities such as a general store, supermarket, primary school, parish church, doctors surgery, and a London line station. Additionally, the larger village of Lenham is within a distance of approximately 2 miles, offering further amenities. Maidstone, the county town of Kent, is also easily accessible, being approximately 8 miles away. Tenure: Freehold. EPC Rating: D. Council Tax Band: F.



INTERNALLY

Large Entrance Porch

Exceptionally spacious L-Shaped Entrance Hall

Cloakroom

Attractive well-proportioned Lounge

Dining Room

Modern Kitchen

Utility Room

Bedroom One

Bedroom Two

Bedroom Three

Luxury Modern Bathroom

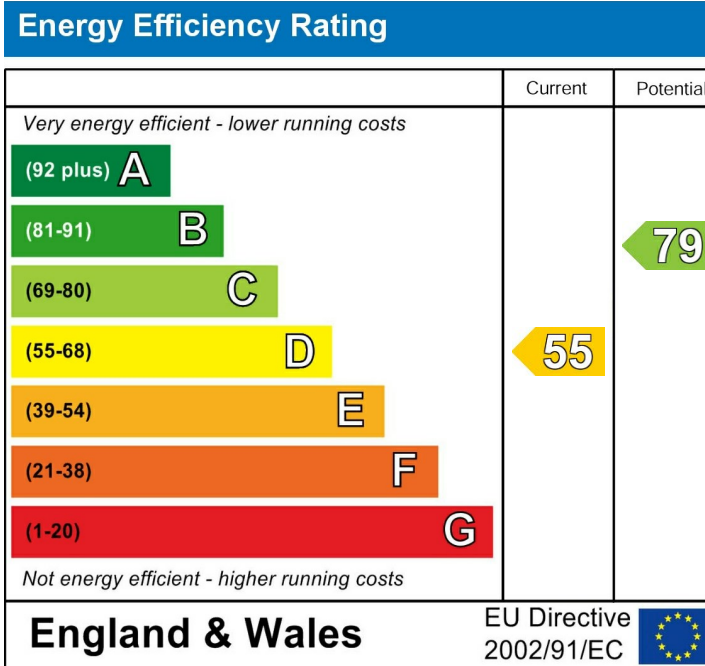
EXTERNALLY

Good sized Garage

Gardens

VIEWING

Strictly by arrangement with the Agent's Bearsted Office, 132 Ashford Road, Bearsted, Maidstone, Kent ME14 4LX. Tel: 01622 739574.



Page & Wells limited for themselves and for the vendors of this property whose agents they are give notice that: 1. These particulars do not constitute any part of, an offer or a contract. 2. All statements contained in these particulars as to this property are made without responsibility on the part of Page & Wells Limited or the Vendor. 3. None of the statements contained in these particulars as to the property is to be relied on as statements or representations of fact. 4. Any intending purchaser must satisfy himself by inspection or otherwise as to the correctness of each of the statements contained in these particulars. 5. The vendor does not make or give, and neither Page & Wells Limited nor any person in their employment has any authority to make or give any representation whatsoever in relation to this property. These particulars are supplied on the understanding that all negotiations are carried out throughout Page & Wells Limited. Properties with a reference prefixes EAA are those which Page & Wells Limited disclose an interest in accordance with the provisions of the Estates Agents Act 1979

Caris Brooke, LakelandsHarrietsham, Maidstone, Kent

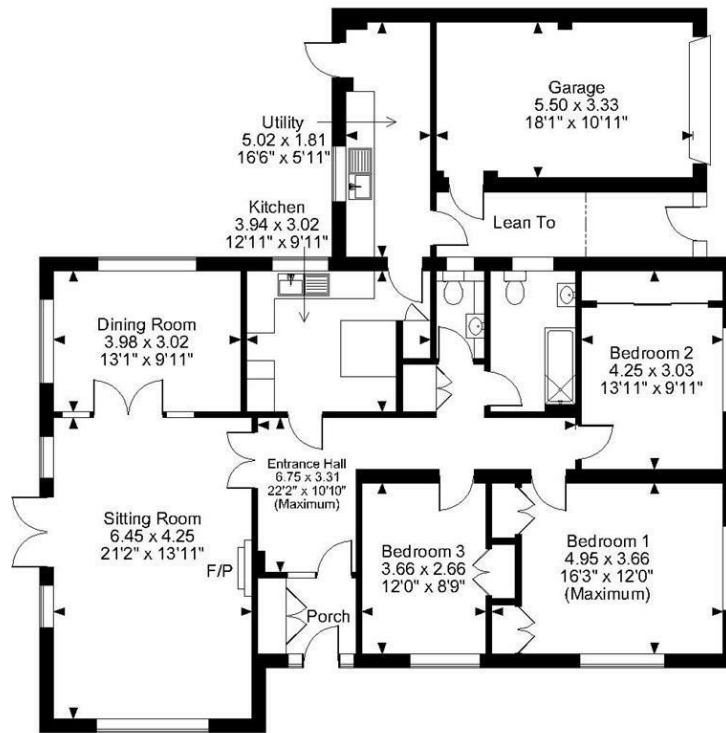
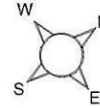
Approximate Gross Internal Area

Main House = 1435 Sq Ft/133 Sq M

Garage = 197 Sq Ft/18 Sq M

Total = 1632 Sq Ft/151 Sq M

Quoted Area Excludes 'External Lean To'



Ground Floor

FOR ILLUSTRATIVE PURPOSES ONLY - NOT TO SCALE

The position & size of doors, windows, appliances and other features are approximate only.

© ehouse. Unauthorised reproduction prohibited. Drawing ref. dig/8624214/SS

