



**9 Horseshoes Lane, Langley, Maidstone, Kent, ME17 1SR**  
**Price £475,000**



Nestled in the picturesque community of Langley, this enchanting detached chalet-style bungalow offers a serene lifestyle across 1,433 square feet and benefits from a beautifully established and maintained rear garden.

The well designed interior boasts a welcoming atmosphere with a spacious entrance hall, sitting room, study, dining room, kitchen, utility room, conservatory, bedroom 3, and a modern shower room on the ground floor. Upstairs, the impressive principal bedroom features a dressing room and en-suite bathroom, whilst bedroom 2 provides a peaceful retreat.

The exterior is equally inviting, with a front driveway for three vehicles and a landscaped rear garden with a patio seating area, pond, shed, and established borders. This property's ideal blend of living accommodation and relaxing outdoor space, along with its convenient location near amenities and transport links, offers a real sense of quality living.

Langley is served by numerous shops including an Aldi supermarket, doctors surgery, schools, parish church and several pubs. There is easy access to the motorway network and mainline stations can be found in the nearby villages of Hollingbourne and Bearsted. Maidstone, the county town of Kent, is c5 miles distance. Tenure: Freehold. Council Tax Band: D. EPC Rating: C.



**ACCOMMODATION**

Ground Floor:

Entrance Hall

Inner Hall

Cloakroom

Dining Room

Sitting Room

Study

Kitchen

Conservatory

Utility Room

Bedroom Three

First Floor:

Principal Bedroom

Dressing Area

En-suite Bathroom

Bedroom Two

**EXTERNALLY**

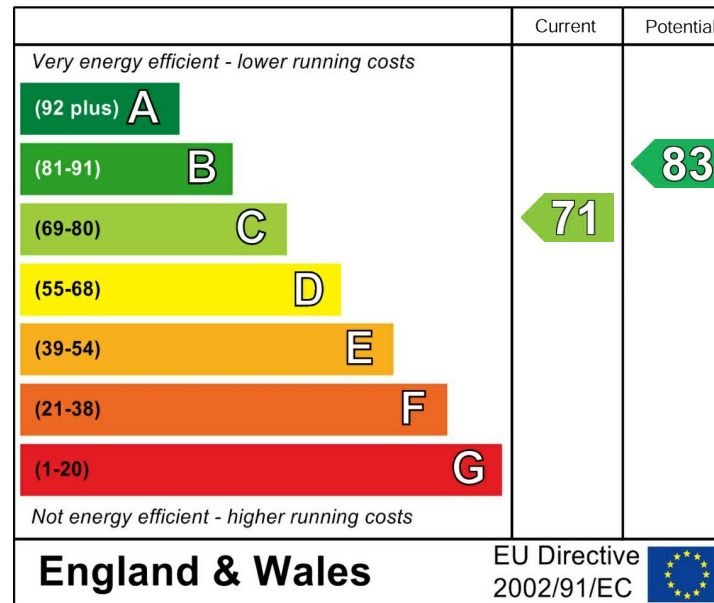
Driveway

Rear Garden

**VIEWING**

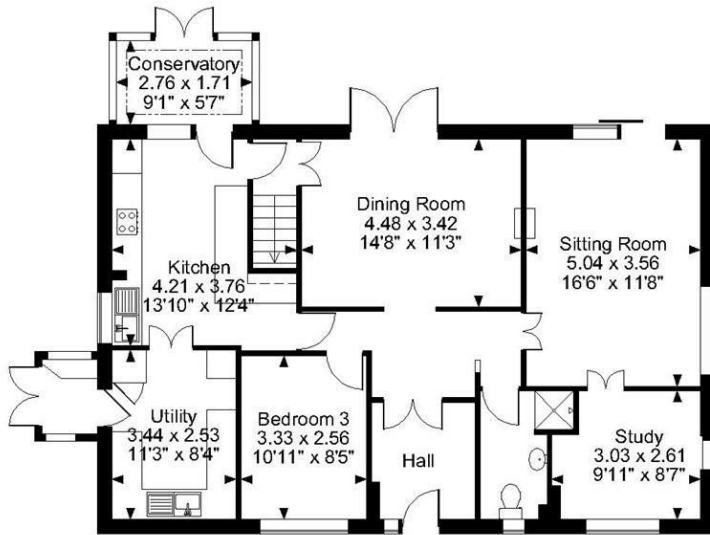
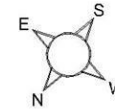
Strictly by arrangement with the Agent's Bearsted  
Office: 132 Ashford Road, Bearsted, Maidstone, Kent  
ME14 4LX. Tel: 01622 739574.

**Energy Efficiency Rating**

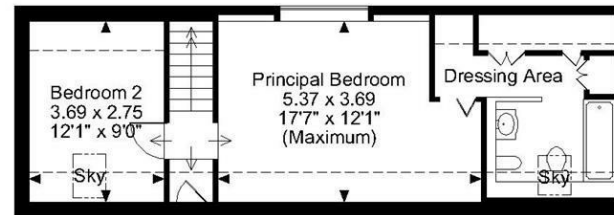


Page & Wells limited for themselves and for the vendors of this property whose agents they are give notice that: 1. These particulars do not constitute any part of, an offer or a contract. 2. All statements contained in these particulars as to this property are made without responsibility on the part of Page & Wells Limited or the Vendor. 3. None of the statements contained in these particulars as to the property is to be relied on as statements or representations of fact. 4. Any intending purchaser must satisfy himself by inspection or otherwise as to the correctness of each of the statements contained in these particulars. 5. The vendor does not make or give, and neither Page & Wells Limited nor any person in their employment has any authority to make or give any representation whatsoever in relation to this property. These particulars are supplied on the understanding that all negotiations are carried out throughout Page & Wells Limited. Properties with a reference prefixes EAA are those which Page & Wells Limited disclose an interest in accordance with the provisions of the Estates Agents Act 1979

Horseshoes Lane, Langley, Maidstone  
 Approximate Gross Internal Area  
 1433 Sq Ft/133 Sq M



Ground Floor



First Floor

**FOR ILLUSTRATIVE PURPOSES ONLY - NOT TO SCALE**

The position & size of doors, windows, appliances and other features are approximate only.

□ □ □ □ Denotes restricted head height

© ehouse. Unauthorised reproduction prohibited. Drawing ref. dig/8621962/SLU

