



Ware Street, Weaving, Maidstone, , ME14 5LA
Offers In The Region Of £775,000



A stunning exceptionally spacious detached bungalow set well back from Ware Street in a sought after position. The property has recently been extended and refurbished to a high specification which features a superb fully fitted kitchen/breakfast/dining room with corian worktops, luxury en-suite shower room and bathroom.

The light and airy accommodation has the benefit of newly installed gas fired central heating, double glazed windows and bi-fold doors. The bungalow is situated on a good sized secluded plot and is approached by an extensive drive with turning area providing parking facilities for 5-6 vehicles. The rear garden measures approximately 70' x 50' and is laid mainly to lawn with numerous trees, shrubs and paved patio, ideal for entertaining. Tenure: Freehold. EPC Rating: D. Council Tax Band: F.



LOCATION

The property is ideally located to take full advantage of all local amenities within Bearsted, particularly the excellent transport links via mainline train station and access to the M20 motorway, together with its close proximity to the renowned Thurnham & Roseacre Schools and picturesque village green with a selection of pubs and restaurants. Leisure facilities include Bearsted golf, bowls and tennis clubs, nearby leisure centres, whilst the beautiful grounds of both Leeds Castle and Mote Park are also close by.

ACCOMMODATION

Entrance Hall

Sitting Room

Open Plan Kitchen/Breakfast/Dining Room

Principal Bedroom

Dressing Room En-suite

Shower Room En-suite

Bedroom 2

Bedroom 3

Bedroom 4

Bedroom 5

Family Bathroom

EXTERNALLY

Garage

Driveway

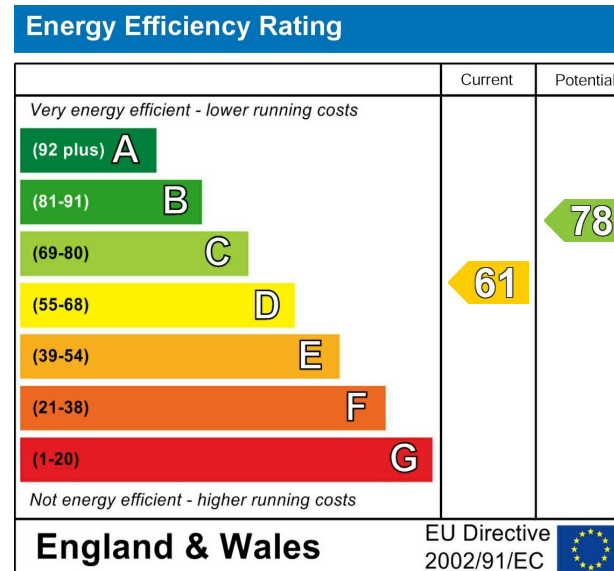
Rear Garden

VIEWING

Strictly by arrangement with the Agent's Bearsted Office: 132 Ashford Road, Bearsted, Maidstone, Kent ME14 4LX. Tel: 01622 739574.

DIRECTIONS

From the Agent's Bearsted Office turn right onto the A20 Ashford Road and immediately turn left into Yeoman Lane. At the Village Green, turn left into Ware Street, where the property will be found after approximately three quarters of a mile on the left hand side, almost opposite Birling House.



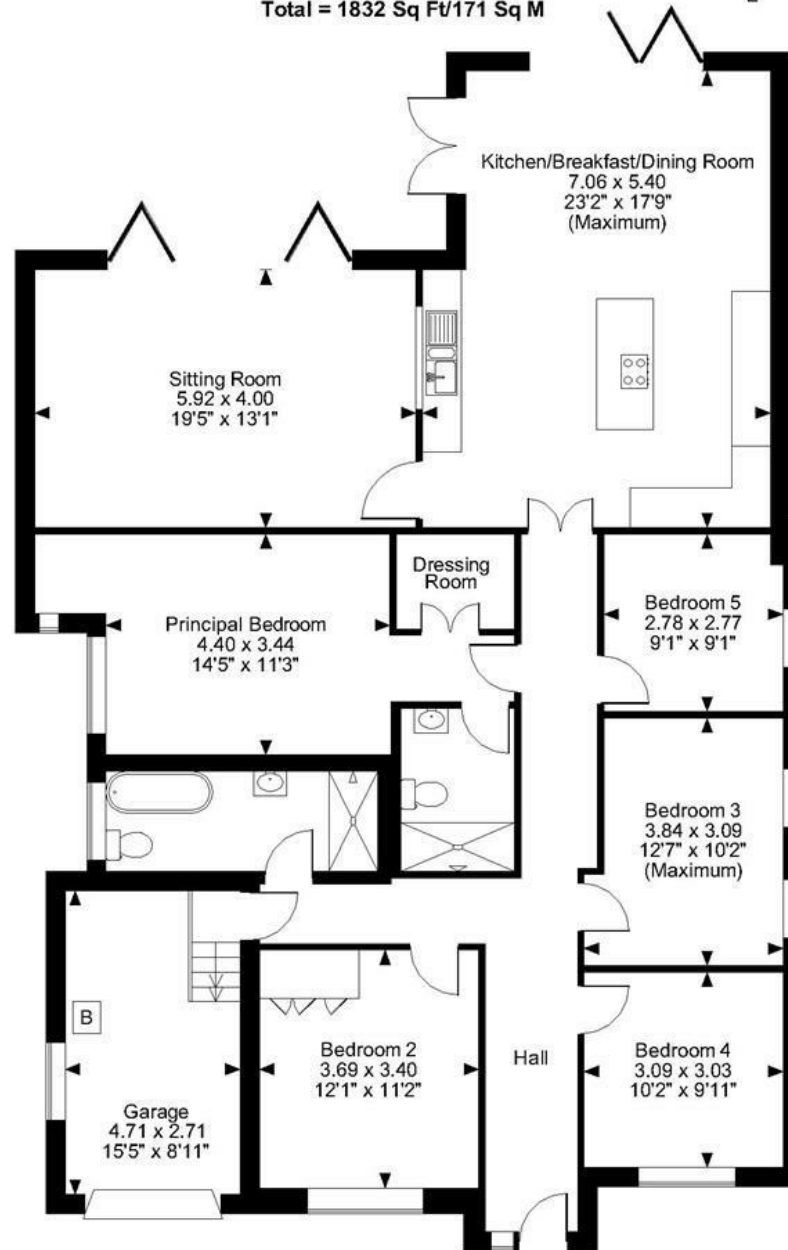
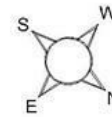
High Chymes, Ware Street Weaving, Maidstone

Approximate Gross Internal Area

Main House = 1695 Sq Ft/158 Sq M

Garage = 137 Sq Ft/13 Sq M

Total = 1832 Sq Ft/171 Sq M



FOR ILLUSTRATIVE PURPOSES ONLY - NOT TO SCALE

The position & size of doors, windows, appliances and other features are approximate only.

© ehouse. Unauthorised reproduction prohibited. Drawing ref. dig/8615833/SLU

