



**High Chymes Ware Street, Weaving, Maidstone, ME14 5LA**  
**Offers In The Region Of £775,000**



A stunning exceptionally spacious detached bungalow set well back from Ware Street in a sought after position. The property has recently been extended and refurbished to a high specification which features a superb fully fitted kitchen/breakfast/dining room with corian worktops, luxury en-suite shower room and bathroom.

The light and airy accommodation has the benefit of newly installed gas fired central heating, double glazed windows and bi-fold doors. The bungalow is situated on a good sized secluded plot and is approached by an extensive drive with turning area providing parking facilities for 5-6 vehicles. The rear garden measures approximately 70' x 50' and is laid mainly to lawn with numerous trees, shrubs and paved patio, ideal for entertaining. Tenure: Freehold. EPC Rating: D. Council Tax Band: F.



## LOCATION

The property is ideally located to take full advantage of all local amenities within Bearsted, particularly the excellent transport links via mainline train station and access to the M20 motorway, together with its close proximity to the renowned Thurnham & Roseacre Schools and picturesque village green with a selection of pubs and restaurants. Leisure facilities include Bearsted golf, bowls and tennis clubs, nearby leisure centres, whilst the beautiful grounds of both Leeds Castle and Mote Park are also close by.

## ACCOMMODATION

Entrance Hall

Sitting Room

Open Plan Kitchen/Breakfast/Dining Room

Principal Bedroom

Dressing Room En-suite

Shower Room En-suite

Bedroom 2

Bedroom 3

Bedroom 4

Bedroom 5

Family Bathroom

## EXTERNALLY

Garage

Driveway

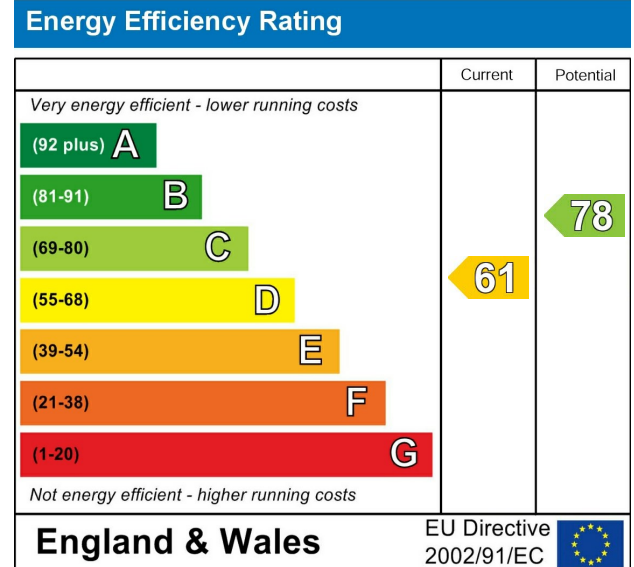
Rear Garden

## VIEWING

Strictly by arrangement with the Agent's Bearsted Office: 132 Ashford Road, Bearsted, Maidstone, Kent ME14 4LX. Tel: 01622 739574.

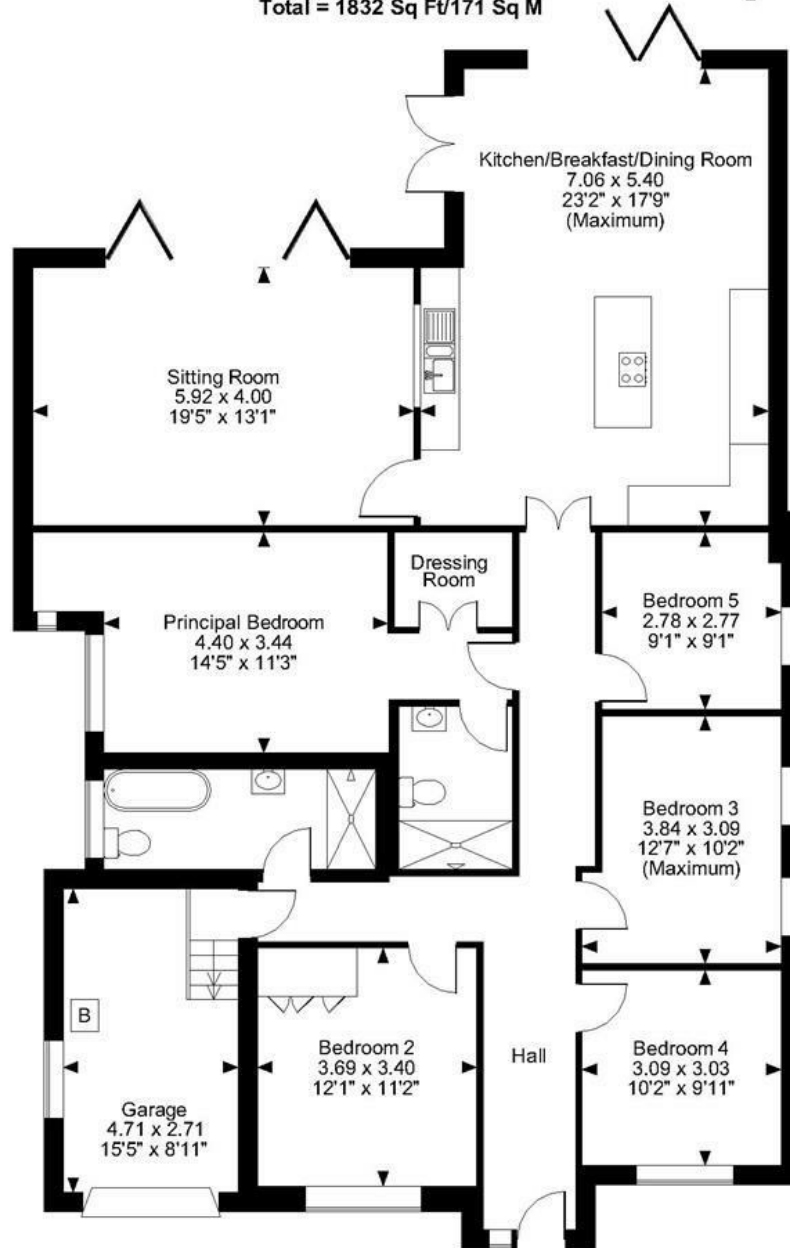
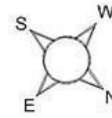
## DIRECTIONS

From the Agent's Bearsted Office turn right onto the A20 Ashford Road and immediately turn left into Yeoman Lane. At the Village Green, turn left into Ware Street, where the property will be found after approximately three quarters of a mile on the left hand side, almost opposite Birling House.



Page & Wells limited for themselves and for the vendors of this property whose agents they are give notice that: 1. These particulars do not constitute any part of, an offer or a contract. 2. All statements contained in these particulars as to this property are made without responsibility on the part of Page & Wells Limited or the Vendor. 3. None of the statements contained in these particulars as to the property is to be relied on as statements or representations of fact. 4. Any intending purchaser must satisfy himself by inspection or otherwise as to the correctness of each of the statements contained in these particulars. 5. The vendor does not make or give, and neither Page & Wells Limited nor any person in their employment has any authority to make or give any representation whatsoever in relation to this property. These particulars are supplied on the understanding that all negotiations are carried out throughout Page & Wells Limited. Properties with a reference prefixes EAA are those which Page & Wells Limited disclose an interest in accordance with the provisions of the Estates Agents Act 1979

**High Chymes, Ware Street Weaving, Maidstone**  
 Approximate Gross Internal Area  
 Main House = 1695 Sq Ft/158 Sq M  
 Garage = 137 Sq Ft/13 Sq M  
 Total = 1832 Sq Ft/171 Sq M



**FOR ILLUSTRATIVE PURPOSES ONLY - NOT TO SCALE**

The position & size of doors, windows, appliances and other features are approximate only.

© ehouse. Unauthorised reproduction prohibited. Drawing ref. dig/8615833/SLU

