



**11 Plumpton Walk, Maidstone, Kent, ME15 8UQ**  
**Offers In The Region Of £300,000**

A beautifully presented and modernised 2-bedroom end-of-terrace house, nestled within a popular residential development. The property showcases a brand-new kitchen and bathroom suite, and has been impeccably redecorated throughout.

Upon entering, the accommodation greets you with an inviting entrance hall, a stylish modern kitchen, and a comfortable sitting room on the ground floor. Upstairs, you will find 2 double bedrooms, a contemporary bathroom and a separate W.C. Outside, the front garden is enclosed by a charming fence and features a well-maintained lawn with a delightful border. Meanwhile, the rear garden benefits from a blend of lawn and patio, complete with a border and an outbuilding for storage. Additionally, the double gate at the rear provides convenient vehicle access.

The property enjoys a convenient location within walking distance to local shops, schools, and a bus service to Maidstone town centre, approximately 3 miles away. It is also near the picturesque Mote Park, which offers recreational facilities such as walking trails, a miniature railway, and a boating lake. Tenure: Freehold. EPC Rating: C. Council Tax Band: B.



**Ground Floor:**

Front Porch

Entrance Hall

Kitchen

Sitting Room

Rear Porch

**First Floor:**

Bedroom One

Bedroom Two

Bathroom

Separate WC

EXTERNALLY

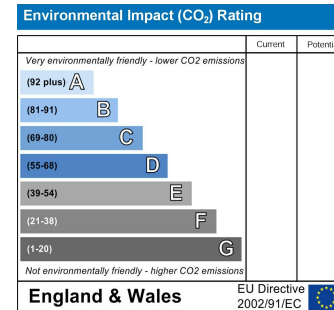
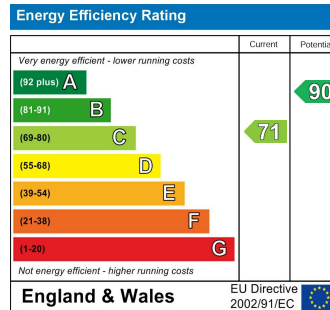
Front Garden

Rear Garden

Garden Store

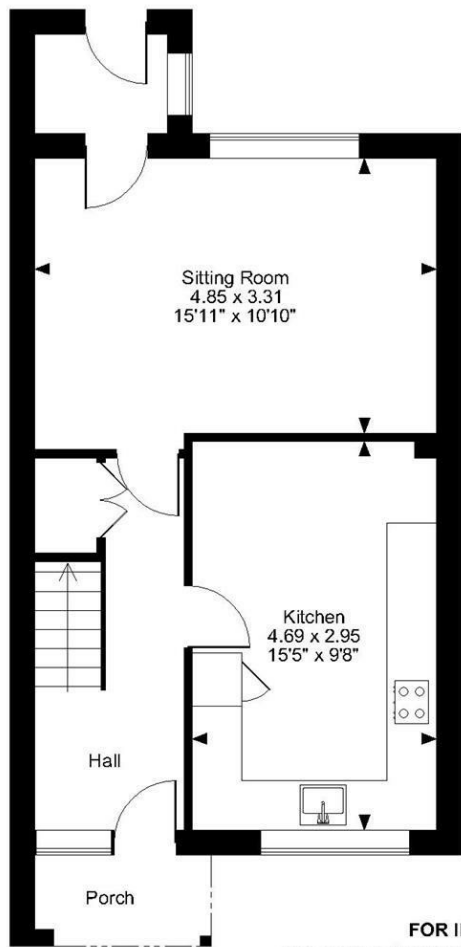
**VIEWING**

Strictly by arrangement with the Agent's Bearsted  
Office: 132 Ashford Road, Bearsted, Maidstone,  
Kent ME14 4LX . Tel: 01622 739574.



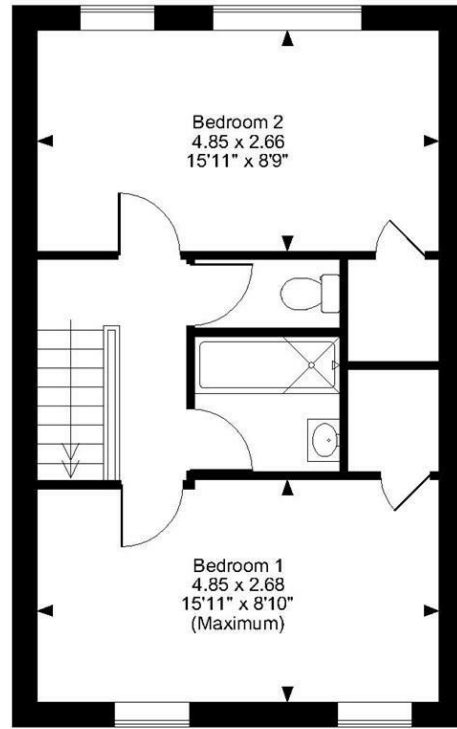
Page & Wells limited for themselves and for the vendors of this property whose agents they are give notice that: 1. These particulars do not constitute any part of, an offer or a contract. 2. All statements contained in these particulars as to this property are made without responsibility on the part of Page & Wells Limited or the Vendor. 3. None of the statements contained in these particulars as to the property is to be relied on as statements or representations of fact. 4. Any intending purchaser must satisfy himself by inspection or otherwise as to the correctness of each of the statements contained in these particulars. 5. The vendor does not make or give, and neither Page & Wells Limited nor any person in their employment has any authority to make or give any representation whatsoever in relation to this property. These particulars are supplied on the understanding that all negotiations are carried out throughout Page & Wells Limited. Properties with a reference prefixes EAA are those which Page & Wells Limited disclose an interest in accordance with the provisions of the Estates Agents Act 1979



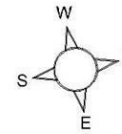
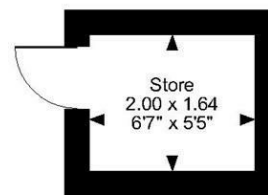


**Ground Floor**

**Plumpton Walk, Maidstone, Kent**  
**Approximate Gross Internal Area**  
**Main House = 865 Sq Ft/80 Sq M**  
**Store = 35 Sq Ft/3 Sq M**  
**Total = 900 Sq Ft/83 Sq M**



**First Floor**



**FOR ILLUSTRATIVE PURPOSES ONLY - NOT TO SCALE**

The position & size of doors, windows, appliances and other features are approximate only.  
 © ehouse. Unauthorised reproduction prohibited. Drawing ref. dig/8608400/SLU

