



32 The Grove, Bearsted, Maidstone, Kent, ME14 4JB
Offers In The Region Of £600,000

Introducing this beautiful extended and modernised 1930's art deco family home, spanning in excess of 1,400 sqft internally, and situated on one of the most desirable roads within Bearsted.

The stylishly presented home benefits from a generous plot boasting a 90ft rear garden. Over the past four years, the current owners have meticulously refurbished the house, including re-plastering, updating the heating system, re-wiring, and installing new windows.

The property is accessed via a spacious driveway capable of accommodating 2 vehicles, with the potential for further expansion across the front lawn, which is adorned with charming shrub borders. Upon entering, you are greeted by an inviting entrance porch leading to the entrance hall, which provides access to the spacious sitting room, dining room featuring French doors opening to the rear garden, a contemporary L-shaped kitchen with a breakfast bar, a cosy snug/bedroom 4 in the garage conversion, and a large downstairs shower room. Upstairs, a bright and airy landing connects to 3 double bedrooms and a modern family bathroom.

The impressive 90ft rear garden presents a delightful landscape, predominantly laid to lawn with well-established shrub and flower borders. Additionally, the paved and decked seating areas are thoughtfully positioned to provide ideal spots for enjoying the sunshine. Tenure: Freehold. EPC Rating: C. Council Tax Band: E.



LOCATION

Situated in the catchment areas for renowned Roseacre and Thurnham primary schools, Bearsted is perfect for families and young professionals alike with direct train links into London and Ashford International, as well as close proximity to M2 and M20 motorways. The village of Bearsted offers multiple attractions such as superb restaurants, pubs and cafés, with community events held on the Green throughout the year.

ACCOMMODATION

Ground Floor:-

Entrance Porch

Entrance Hall

Sitting Room

Dining Room

Kitchen

Snug/Bedroom 4

Shower Room

First Floor:-

Landing

Bedroom 1

Bedroom 2

Bedroom 3

Bathroom

EXTERNALLY

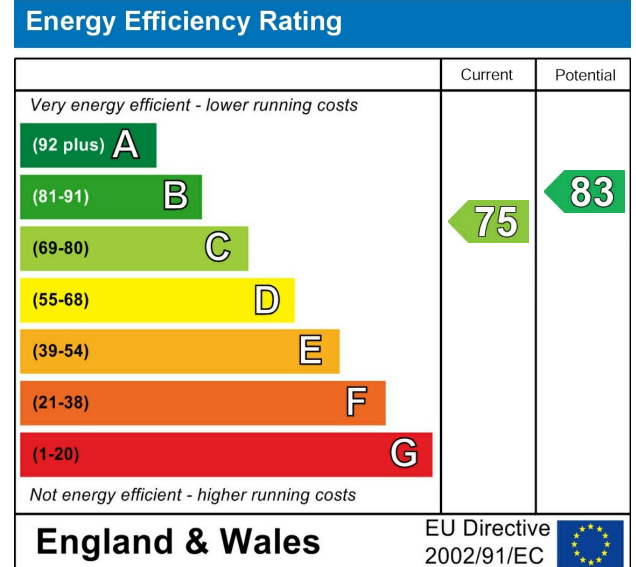
Front Garden

Driveway

Rear Garden

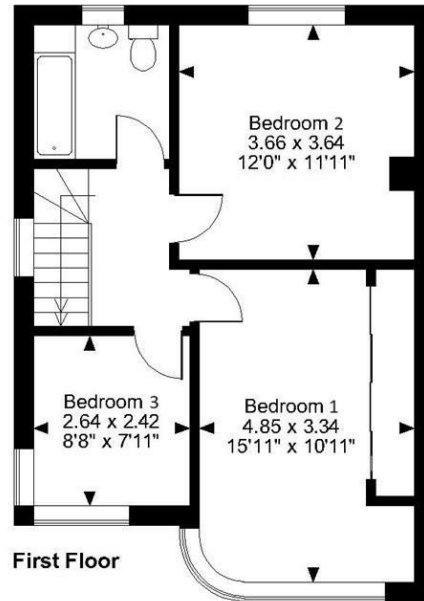
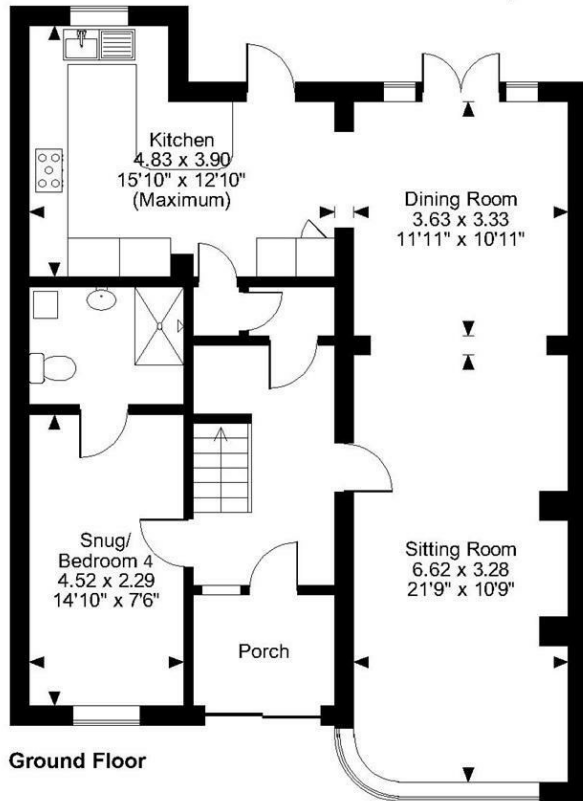
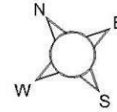
VIEWING

Strictly by arrangement with the Agent's Bearsted Office: 132 Ashford Road, Bearsted, Maidstone, Kent ME14 4LX. Tel: 01622 739574.



Page & Wells limited for themselves and for the vendors of this property whose agents they are give notice that: 1. These particulars do not constitute any part of, an offer or a contract. 2. All statements contained in these particulars as to this property are made without responsibility on the part of Page & Wells Limited or the Vendor. 3. None of the statements contained in these particulars as to the property is to be relied on as statements or representations of fact. 4. Any intending purchaser must satisfy himself by inspection or otherwise as to the correctness of each of the statements contained in these particulars. 5. The vendor does not make or give, and neither Page & Wells Limited nor any person in their employment has any authority to make or give any representation whatsoever in relation to this property. These particulars are supplied on the understanding that all negotiations are carried out throughout Page & Wells Limited. Properties with a reference prefixes EAA are those which Page & Wells Limited disclose an interest in accordance with the provisions of the Estates Agents Act 1979

Bearsted, Maidstone, Kent
Approximate Gross Internal Area
1413 Sq Ft/131 Sq M



FOR ILLUSTRATIVE PURPOSES ONLY - NOT TO SCALE

The position & size of doors, windows, appliances and other features are approximate only.
© ehouse. Unauthorised reproduction prohibited. Drawing ref. dig/8609761/SLU

