



**22 Elder Close, Kingswood, Maidstone, Kent, ME17 3PR**  
**Guide Price £300,000**

**\*\* GUIDE PRICE £300,000 - £325,000 \*\*** This charming three bedroom family home, boasting ample space both inside and out is nestled in the sought-after village of Kingswood.

The three-bedroom property opens with an inviting entrance porch leading into a spacious living room, perfect for family relaxation. At the rear, a superb open-plan kitchen and dining area feature doors that open to an enclosed rear garden. The first floor comprises two double bedrooms, a single bedroom, and a separate bathroom and cloakroom. Additional amenities include parking via a garage en-block.

Located in the picturesque village of Kingswood, positioned below the North Downs and South East of Maidstone, this property benefits from a vibrant community. The village offers a primary school, Post Office, local stores, and a Village Hall. Tenure: Freehold. EPC Rating: C. Council Tax Band: C.



**GROUND FLOOR**

Entrance Porch

Sitting Room

Kitchen/Diner

**FIRST FLOOR**

Landing

Bedroom 1

Bedroom 2

Bedroom 3

Family Bathroom

Separate W.C.

**EXTERNALLY**

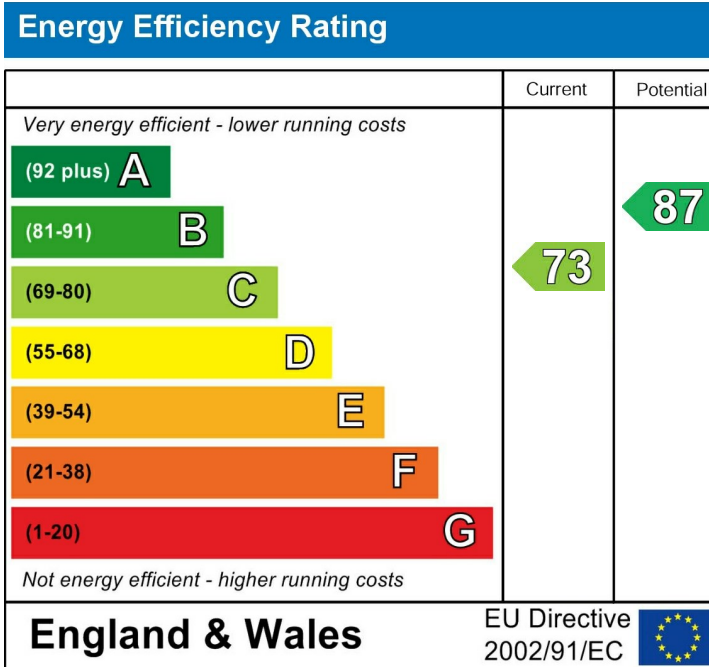
Front Garden

Rear Garden

Garage En-bloc

**VIEWING**

Strictly by arrangement with the Agent's Bearsted  
Office, 132 Ashford Road, Bearsted, Maidstone, Kent  
ME14 4LX. Tel: 01622 739574.



Page & Wells limited for themselves and for the vendors of this property whose agents they are give notice that: 1. These particulars do not constitute any part of, an offer or a contract. 2. All statements contained in these particulars as to this property are made without responsibility on the part of Page & Wells Limited or the Vendor. 3. None of the statements contained in these particulars as to the property is to be relied on as statements or representations of fact. 4. Any intending purchaser must satisfy himself by inspection or otherwise as to the correctness of each of the statements contained in these particulars. 5. The vendor does not make or give, and neither Page & Wells Limited nor any person in their employment has any authority to make or give any representation whatsoever in relation to this property. These particulars are supplied on the understanding that all negotiations are carried out throughout Page & Wells Limited. Properties with a reference prefixes EAA are those which Page & Wells Limited disclose an interest in accordance with the provisions of the Estates Agents Act 1979

Elder Close, Kingswood, Maidstone, Kent

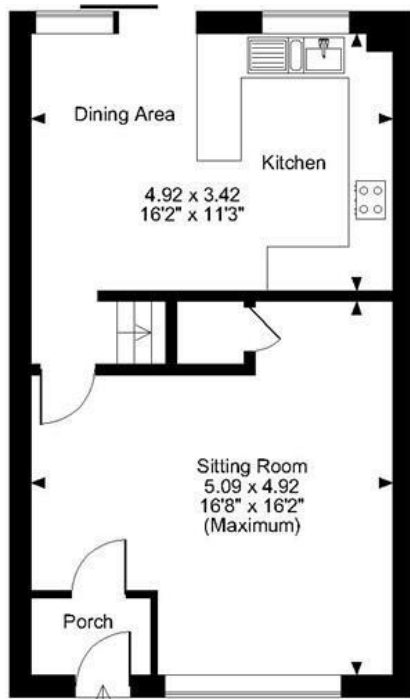
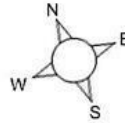
Approximate Gross Internal Area

Main House = 922 Sq Ft/86 Sq M

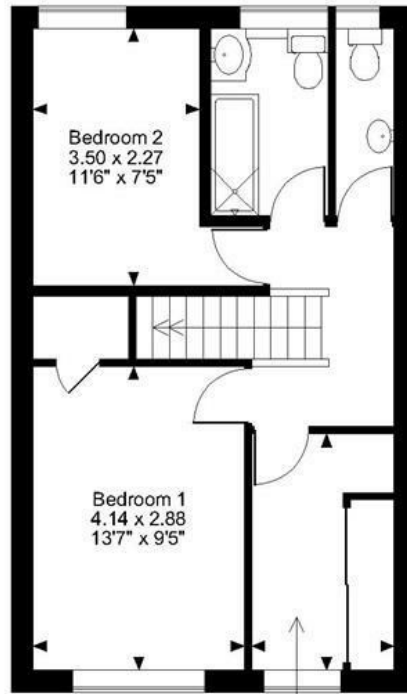
Garage = 121 Sq Ft/11 Sq M

Outbuilding = 47 Sq Ft/4 Sq M

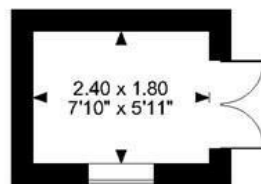
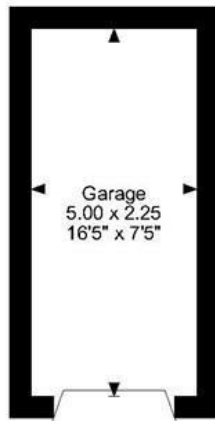
Total = 1090 Sq Ft/101 Sq M



Ground Floor



First Floor



FOR ILLUSTRATIVE PURPOSES ONLY - NOT TO SCALE

The position & size of doors, windows, appliances and other features are approximate only.

© ehouse. Unauthorised reproduction prohibited. Drawing ref. dig/8603359/LCO

