



10 Freeman Way, Maidstone, ME15 8AN
Guide Price £350,000



**** GUIDE PRICE £350,000 - 375,000 **** A beautiful example of a 2 bedroom semi-detached bungalow with a delightful secluded rear garden, situated on a desirable residential road in Maidstone.

The property features a generous sitting room that leads into a well-built conservatory overlooking an expansive rear garden. It also includes a modern fitted kitchen, a shower room, and two double bedrooms with built-in wardrobes. Notable enhancements are the contemporary internal doors and feature radiators.

Externally, the private west-facing rear garden includes a detached garage, and there is ample off-road parking for two vehicles at the front.

The property enjoys a convenient location within walking distance to local shops, schools, and a bus service to Maidstone town centre, approximately 3 miles away. It is also near the picturesque Mote Park, which offers recreational facilities such as walking trails, a miniature railway, and a boating lake. **NO FORWARD CHAIN.** Tenure: Freehold. EPC Rating: C. Council Tax Band: D.



INTERNALLY

Entrance Hall

Sitting Room

Conservatory

Kitchen

Bedroom 1

Bedroom 2

Shower Room

EXTERNALLY

Front Garden

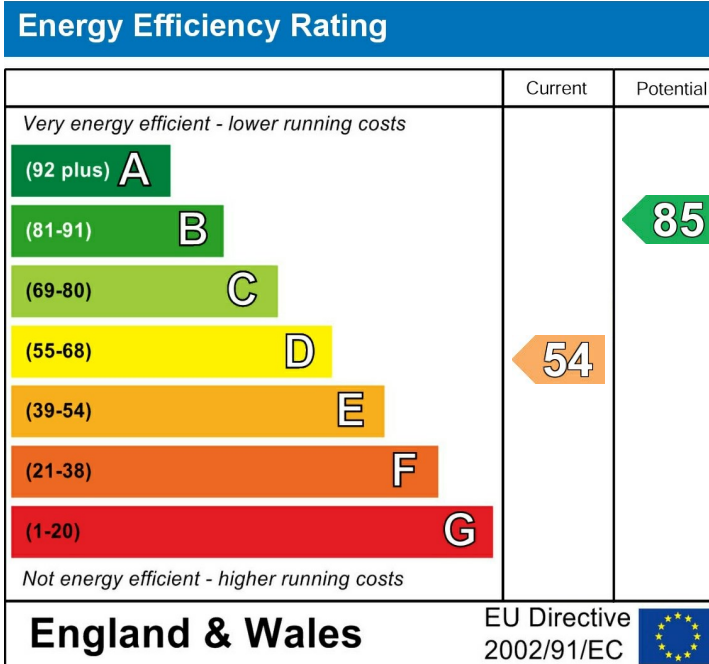
Driveway

Rear Garden

Detached Garage

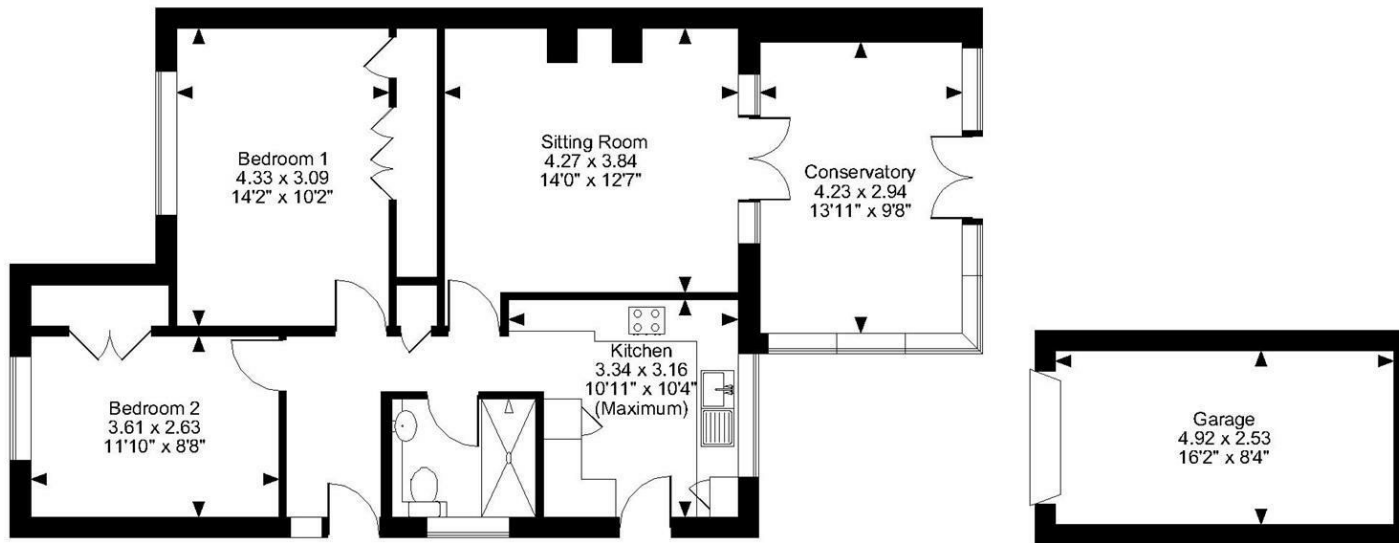
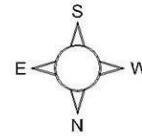
VIEWING

Strictly by arrangement with the Agent's Bearsted Office, 132 Ashford Road, Bearsted, Maidstone, Kent ME14 4LX. Tel: 01622 739574.



Page & Wells limited for themselves and for the vendors of this property whose agents they are give notice that: 1. These particulars do not constitute any part of, an offer or a contract. 2. All statements contained in these particulars as to this property are made without responsibility on the part of Page & Wells Limited or the Vendor. 3. None of the statements contained in these particulars as to the property is to be relied on as statements or representations of fact. 4. Any intending purchaser must satisfy himself by inspection or otherwise as to the correctness of each of the statements contained in these particulars. 5. The vendor does not make or give, and neither Page & Wells Limited nor any person in their employment has any authority to make or give any representation whatsoever in relation to this property. These particulars are supplied on the understanding that all negotiations are carried out throughout Page & Wells Limited. Properties with a reference prefixes EAA are those which Page & Wells Limited disclose an interest in accordance with the provisions of the Estates Agents Act 1979

Freeman Way, Maidstone, Kent
Approximate Gross Internal Area
Main House = 851 Sq Ft/79 Sq M
Garage = 134 Sq Ft/12 Sq M
Total = 985 Sq Ft/91 Sq M



Ground Floor

FOR ILLUSTRATIVE PURPOSES ONLY - NOT TO SCALE

The position & size of doors, windows, appliances and other features are approximate only.

© ehouse. Unauthorised reproduction prohibited. Drawing ref. dig/8603852/SS

