



12 Longfields Drive, Bearsted, Maidstone, ME14 4PD
Offers In Excess Of £375,000

**** CHAIN FREE ** PERFECT FOR FIRST TIME BUYERS **** Nestled in a serene no-through road within Bearsted Park, this charming three-bedroom link detached home with private rear garden, is ideal for first time buyers or families with a park being within a five minute walk.

The home features a spacious living room and an inviting kitchen-dining area that opens effortlessly to a south-easterly facing rear garden backing onto woodland. It includes three well-appointed bedrooms, one with a built-in wardrobe, and a tiled bathroom with white suite, offering both comfort and functionality. Additionally, the property includes a garage to side with rear access and a driveway that accommodates two vehicles.

The property enjoys an enviable location near several primary and secondary schools, whilst commuters will find Bearsted mainline station conveniently situated within a short 15 minute walk. Easy access to the M20 and M2 motorways further add to the convenience. The charming village green with its selection of cafes, pubs, and restaurants is within walking distance. Nearby leisure options include golf, bowls, and tennis clubs. Nature enthusiasts will enjoy the stunning grounds of Leeds Castle and Mote Park which are close by. Limited time to secure this property, viewing strongly advised.

Tenure: Freehold. EPC Rating: D. Council Tax Band: E.



GROUND FLOOR

Entrance Porch

Sitting Room

Kitchen/Diner

FIRST FLOOR

Landing

Bedroom 1

Bedroom 2

Bedroom 3

Bathroom

EXTERNALLY

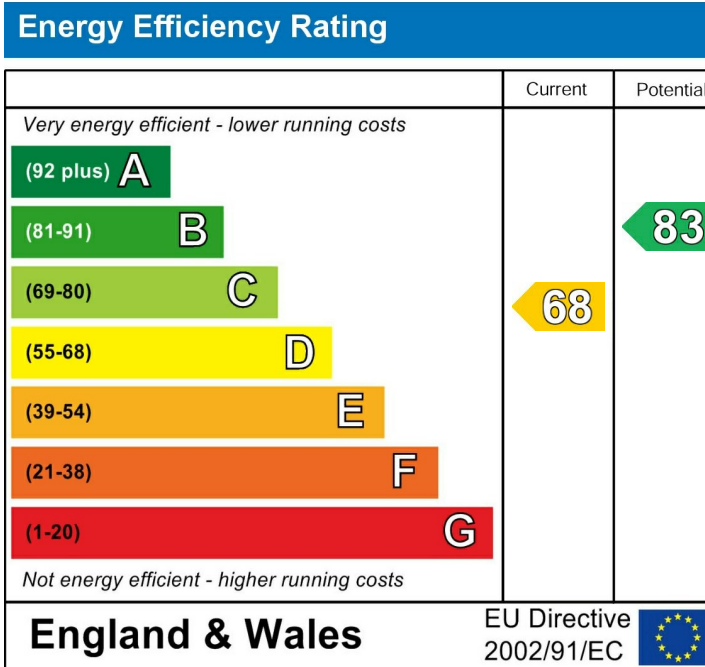
Driveway

Garage

Rear Garden

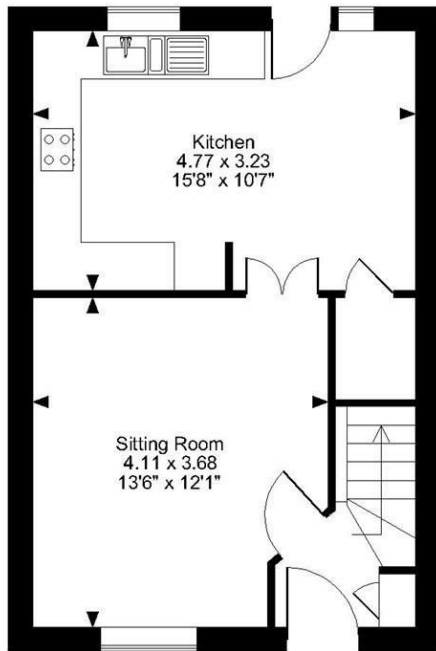
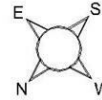
VIEWING

Strictly by arrangement with the Agent's Bearsted
Office: 132 Ashford Road, Bearsted, Maidstone, Kent
ME14 4LX. Tel: 01622 739574.

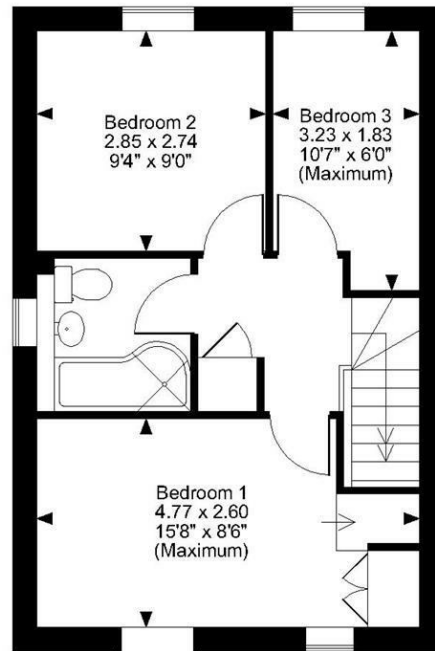


Page & Wells limited for themselves and for the vendors of this property whose agents they are give notice that: 1. These particulars do not constitute any part of, an offer or a contract. 2. All statements contained in these particulars as to this property are made without responsibility on the part of Page & Wells Limited or the Vendor. 3. None of the statements contained in these particulars as to the property is to be relied on as statements or representations of fact. 4. Any intending purchaser must satisfy himself by inspection or otherwise as to the correctness of each of the statements contained in these particulars. 5. The vendor does not make or give, and neither Page & Wells Limited nor any person in their employment has any authority to make or give any representation whatsoever in relation to this property. These particulars are supplied on the understanding that all negotiations are carried out throughout Page & Wells Limited. Properties with a reference prefixes EAA are those which Page & Wells Limited disclose an interest in accordance with the provisions of the Estates Agents Act 1979

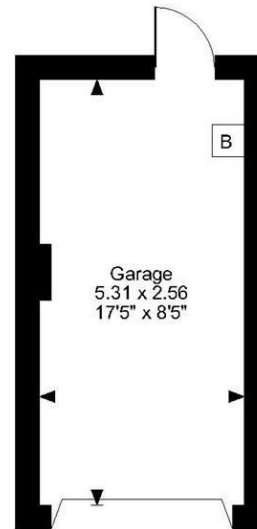
Longfields Drive, Bearsted, Maidstone, Kent,
 Approximate Gross Internal Area
 Main House = 752 Sq Ft/70 Sq M
 Garage = 146 Sq Ft/14 Sq M
 Total = 898 Sq Ft/84 Sq M



Ground Floor



First Floor



FOR ILLUSTRATIVE PURPOSES ONLY - NOT TO SCALE

The position & size of doors, windows, appliances and other features are approximate only.
 © ehouse. Unauthorised reproduction prohibited. Drawing ref. dig/8604997/SS