



21 Alexander Court, Mote Park, Maidstone, ME15 8WY
Price £375,000



This superbly designed two-bedroom, first-floor apartment offers approximately 900 sq ft of living space and is set within a Regency-style complex. Audley Mote House Retirement Village is nestled in the picturesque 450-acre Mote Park, near the village of Bearsted, which offers a wide array of amenities.

At the village's core is the Grade II Listed Mote House, a beautifully restored Victorian mansion that has been transformed into luxury apartments. This mansion also houses the Audley Club, which includes a restaurant, bistro, swimming pool, gym, and library, all of which you will gain membership to upon residence.

These properties are exclusively available to individuals aged 55 and over. The apartment is located in an appealing two-storey building featuring a communal entrance hall with a secure entry door and boasts a high-end finish, including a luxury fitted kitchen and bathroom, as well as an en-suite shower room to the main bedroom. **** HOME CARER AND 24/7 ASSISTANCE SERVICE AVAILABLE ** NO FORWARD CHAIN ****

There is an annual ground rent of £500. The current management charge is £1,025 per calendar month, which includes a credit of £83.63 in the restaurant / bar-bistro. A deferred management charge also applies to this property. Tenure: Leasehold. Council Tax Band: E. EPC Rating: B.



LOCATION

The property is within close proximity of Bearsted, which has excellent transport links via mainline train station and access to the M20 motorway, and the picturesque Village Green with a selection of pubs and restaurants. Leisure facilities include Bearsted golf, bowls and tennis clubs, nearby leisure centres, whilst the beautiful grounds of Leeds Castle are close by.

INTERNALLY

Entrance Hall

Sitting Room

Kitchen

Bedroom One

En-suite Shower Room

Bedroom Two

Bathroom

EXTERNALLY

Communal Gardens

Parking

There is one allocated parking space plus a number of visitors parking areas.

OTHER INFORMATION

Leasehold Details


The property is leasehold with 109 years remaining.

Charges

There is an annual ground rent of £500. The current management charge is £1,025 per calendar month, which includes a credit of £83.63 in the restaurant / bar-bistro. A deferred management charge also applies to this property.

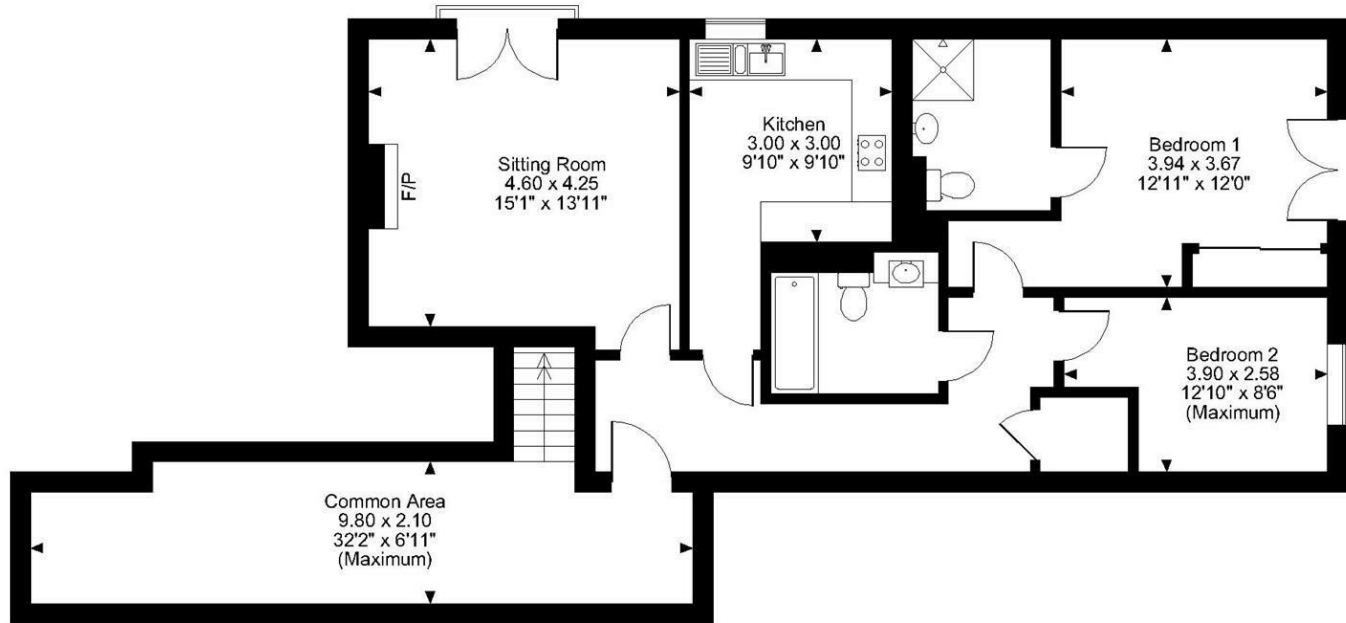
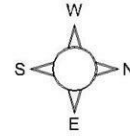
VIEWING

Strictly by arrangement with the Agent's Bearsted Office: 132 Ashford Road, Bearsted, Maidstone, Kent ME14 4LX. Tel: 01622 739574.

Energy Efficiency Rating		
	Current	Potential
<i>Very energy efficient - lower running costs</i>		
(92 plus) A		
(81-91) B	84	84
(69-80) C		
(55-68) D		
(39-54) E		
(21-38) F		
(1-20) G		
<i>Not energy efficient - higher running costs</i>		
England & Wales	EU Directive 2002/91/EC	

Page & Wells limited for themselves and for the vendors of this property whose agents they are give notice that: 1. These particulars do not constitute any part of, an offer or a contract. 2. All statements contained in these particulars as to this property are made without responsibility on the part of Page & Wells Limited or the Vendor. 3. None of the statements contained in these particulars as to the property is to be relied on as statements or representations of fact. 4. Any intending purchaser must satisfy himself by inspection or otherwise as to the correctness of each of the statements contained in these particulars. 5. The vendor does not make or give, and neither Page & Wells Limited nor any person in their employment has any authority to make or give any representation whatsoever in relation to this property. These particulars are supplied on the understanding that all negotiations are carried out throughout Page & Wells Limited. Properties with a reference prefixes EAA are those which Page & Wells Limited disclose an interest in accordance with the provisions of the Estates Agents Act 1979

MotePark, Maidstone
Approximate Gross Internal Area
900 Sq Ft/84 Sq M
Quoted Common Area = 221 Sq Ft/21 Sq M



FOR ILLUSTRATIVE PURPOSES ONLY - NOT TO SCALE

The position & size of doors, windows, appliances and other features are approximate only.

© ehouse. Unauthorised reproduction prohibited. Drawing ref. dig/8599569/LCO

