



**23 Plantation Lane, Bearsted, Maidstone, Kent, ME14 4BH**  
**Guide Price £475,000**





**\*\* GUIDE PRICE £475,000 - £500,000 \*\*** Introducing this enchanting 1930's semi-detached house boasting 3 bedrooms and a sprawling rear garden of approximately 120 feet. Nestled on a coveted street in Bearsted, this home offers huge potential for modernisation, as well as the possibility of extending and converting the loft space if desired.

The ground floor welcomes you with an inviting entrance hall, leading to a comfortable sitting room, a charming dining room, a fitted kitchen, and a convenient shower room. Upstairs, two generous double bedrooms, a cosy single bedroom, and a family bathroom await.

Outside, the driveway accommodates at least two vehicles and presents an opportunity for expansion over the lush front lawn. The extensive rear garden, adorned with established borders, is predominantly laid to lawn and features a detached garage, a large vegetable patch, a greenhouse, and two storage sheds. Tenure: Freehold. EPC Rating: D. Council Tax Band: D.



## LOCATION

Situated in the centre of Bearsted, ideally located to take full advantage of all local amenities, including convenient transport links via a mainline train station and access to the M2 & M20 motorways, together with its close proximity to the highly regarded Thurnham Junior & Roseacre Primary Schools, and just a short walk from the picturesque Village Green with a selection of excellent pubs and restaurants. Leisure facilities include Bearsted golf, bowls and tennis clubs, nearby leisure centres, whilst the beautiful grounds of both Leeds Castle and Mote Park are easily accessible.

## ACCOMMODATION

### Ground Floor:

Entrance Hall

Shower Room

Dining Room

Sitting Room

Kitchen

### First Floor:

Bedroom One

Bedroom Two

Bedroom Three

Bathroom

## EXTERNALLY

Front Garden

Driveway

Garage

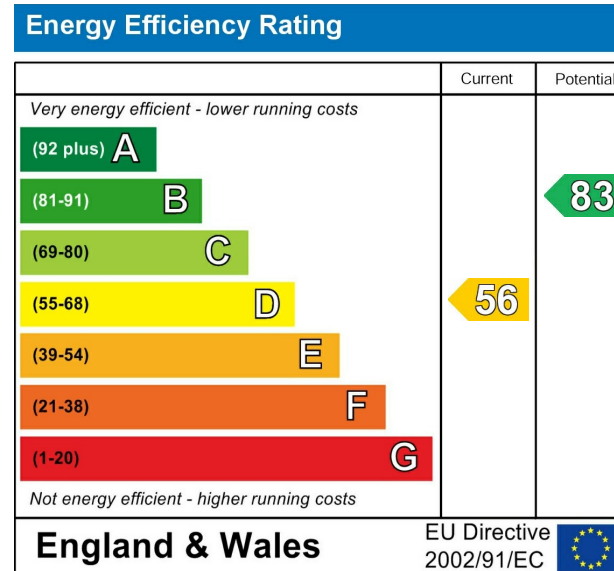
Rear Garden

Shed x 2

Greenhouse

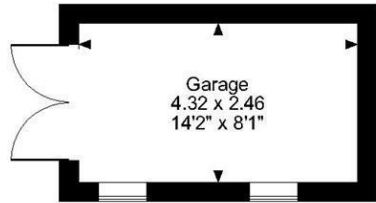
## VIEWING

Strictly by arrangement with the Agent's Bearsted Office, 132 Ashford Road, Bearsted, Maidstone, Kent ME14 4LX . Tel: 01622 739574.

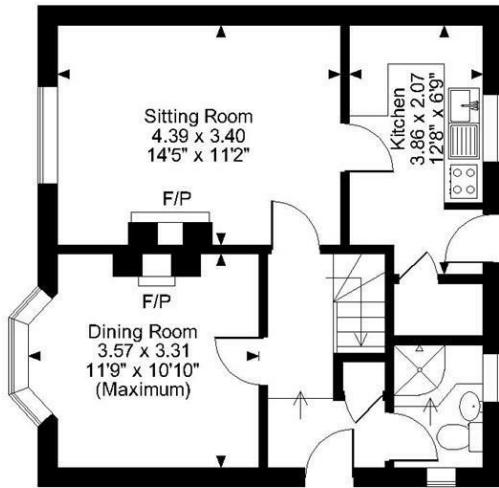
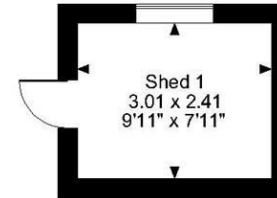
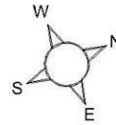


Page & Wells limited for themselves and for the vendors of this property whose agents they are give notice that: 1. These particulars do not constitute any part of, an offer or a contract. 2. All statements contained in these particulars as to this property are made without responsibility on the part of Page & Wells Limited or the Vendor. 3. None of the statements contained in these particulars as to the property is to be relied on as statements or representations of fact. 4. Any intending purchaser must satisfy himself by inspection or otherwise as to the correctness of each of the statements contained in these particulars. 5. The vendor does not make or give, and neither Page & Wells Limited nor any person in their employment has any authority to make or give any representation whatsoever in relation to this property. These particulars are supplied on the understanding that all negotiations are carried out throughout Page & Wells Limited. Properties with a reference prefixes EAA are those which Page & Wells Limited disclose an interest in accordance with the provisions of the Estates Agents Act 1979

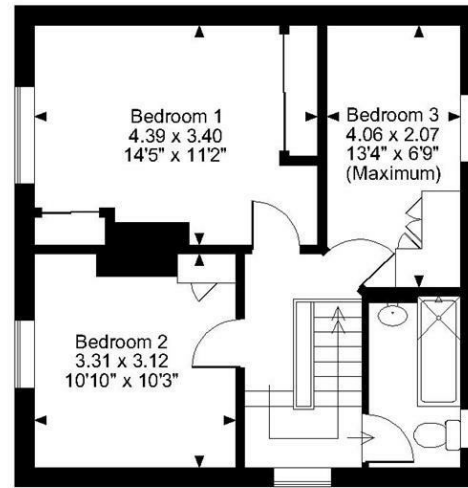




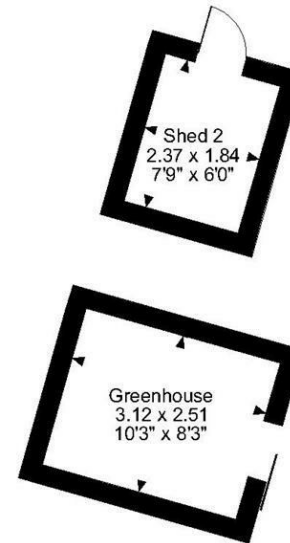
**Plantation Lane, Bearsted, Maidstone**  
**Approximate Gross Internal Area**  
 Main House = 970 Sq Ft/90 Sq M  
 Garage = 114 Sq Ft/11 Sq M  
 Sheds & Greenhouse = 209 Sq Ft/19 Sq M  
 Total = 1293 Sq Ft/120 Sq M



Ground Floor



First Floor



**FOR ILLUSTRATIVE PURPOSES ONLY - NOT TO SCALE**  
 The position & size of doors, windows, appliances and other features are approximate only.  
 © ehouse. Unauthorised reproduction prohibited. Drawing ref. dig/8594571/SS

