



1 Woodchurch Court Station Road, Harrietsham, Maidstone, ME17 1JA
Guide Price £475,000

**** GUIDE PRICE: £475,000 - £500,000 **** An expansive, five-bedroom, three-bathroom detached house located in a small private gated development in the heart of Harrietsham village.

The property spans three floors, featuring a welcoming entrance hall, a well-lit sitting room, a fitted kitchen adjacent to the spacious dining room which has the potential to be knocked through into one large sociable space, and a convenient WC. The first floor includes a double bedroom with a modern en-suite shower room, three additional good-sized bedrooms, and a family bathroom. The second floor showcases an impressive principal bedroom suite with built-in wardrobes, a generous en-suite shower room, and impressive under eaves storage.

Externally, the property is accessed via electric gates shared with one neighbouring property. The driveway leads to a single garage and three additional parking spaces. The front of the property features a spacious paved private seating area, while the rear offers a mainly lawned garden with a patio seating area and a garden shed. Furthermore, the property is equipped with an electric car charge point attached to the garage. Tenure: Freehold. EPC Rating: C. Council Tax Band: E.



LOCATION

The property is conveniently situated within a short walk of Harrietsham mainline station and the centre of Harrietsham village. The village is served by a general store, supermarket, primary school, parish church and doctors surgery. The larger village of Lenham is c2 miles distance where a further range of amenities are available and Maidstone, the county town of Kent, is c8 miles distance.

ACCOMMODATION

Ground Floor:

Entrance Hall

Cloakroom

Sitting Room

Dining Room

Kitchen

First Floor:

Bedroom Two

En-suite Shower Room

Bedroom Three

Bedroom Four

Bedroom Five/Office

Family Bathroom

Second Floor:

Principal Bedroom

En-suite Shower Room

EXTERNALLY

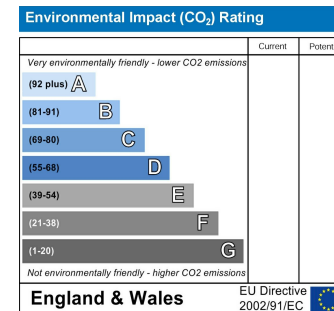
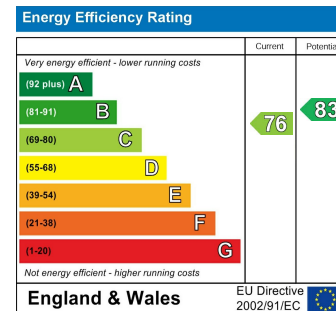
Front & Rear Garden

Driveway

Garage

VIEWING

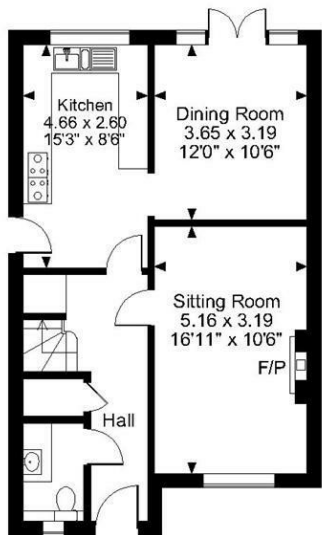
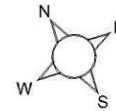
Strictly by arrangement with the Agent's Bearsted Office, 132 Ashford Road, Bearsted, Maidstone, Kent ME14 4LX . Tel: 01622 739574.



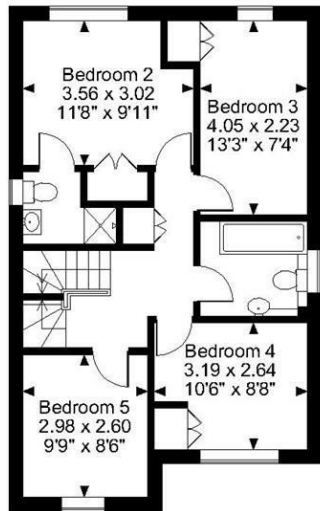
Page & Wells limited for themselves and for the vendors of this property whose agents they are give notice that: 1. These particulars do not constitute any part of, an offer or a contract. 2. All statements contained in these particulars as to this property are made without responsibility on the part of Page & Wells Limited or the Vendor. 3. None of the statements contained in these particulars as to the property is to be relied on as statements or representations of fact. 4. Any intending purchaser must satisfy himself by inspection or otherwise as to the correctness of each of the statements contained in these particulars. 5. The vendor does not make or give, and neither Page & Wells Limited nor any person in their employment has any authority to make or give any representation whatsoever in relation to this property. These particulars are supplied on the understanding that all negotiations are carried out throughout Page & Wells Limited. Properties with a reference prefixes EAA are those which Page & Wells Limited disclose an interest in accordance with the provisions of the Estates Agents Act 1979



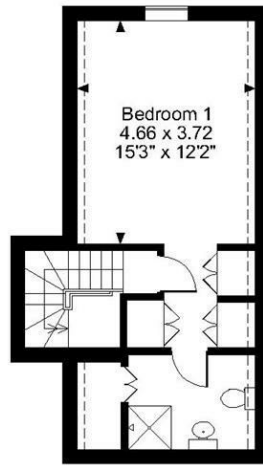
Station Road, Harrietsham, Maidstone, Kent
 Approximate Gross Internal Area
 Main House = 1531 Sq Ft/142 Sq M
 Garage = 176 Sq Ft/16 Sq M
 Shed = 34 Sq Ft/3 Sq M
 Total = 1741 Sq Ft/161 Sq M



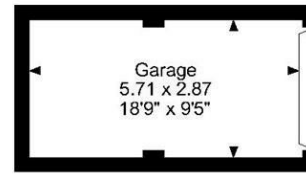
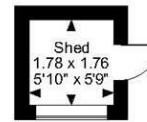
Ground Floor



First Floor



Second Floor



FOR ILLUSTRATIVE PURPOSES ONLY - NOT TO SCALE
 The position & size of doors, windows, appliances and other features are approximate only.
 □□□□ Denotes restricted head height
 © ehouse. Unauthorised reproduction prohibited. Drawing ref. dig/8596114/SS

