



28 Roseacre Lane, Bearsted, Maidstone, ME14 4HZ
Offers In The Region Of £450,000



A charming 18th century Grade II Listed end of terrace period cottage situated in a choice position approached by a private drive off Roseacre Lane leading to an extensive gravelled hard standing area suitable for three vehicles.

The exceptionally well-presented accommodation has a wealth of period features including exposed timbers, a well-fitted kitchen, modern bathroom, gas fired central heating and part oak flooring. The good sized mature gardens are a distinct feature of the cottage and enjoy a high degree of seclusion and are well-stocked with shrubs, trees and flower borders.

Situated in the catchment area for the renowned Roseacre & Thurnham primary schools, Bearsted also has direct train links into London and Ashford International, as well as a close proximity to the M2 & M20 motorways. The village of Bearsted offers multiple attractions such as superb restaurants, pubs and cafes with community events held on The Green throughout the year. Tenure: Freehold. Council Tax Band: E. EPC Exempt.



ACCOMMODATION

Ground Floor:

Sitting Room

Kitchen

Dining Room

First Floor:

Bedroom One

Bedroom Two

Bathroom

EXTERNALLY

Front & Rear Gardens

Driveway

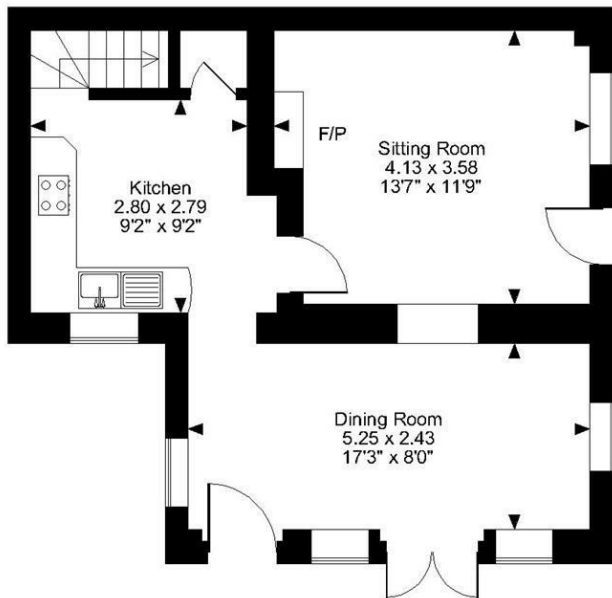
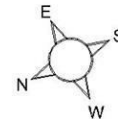
VIEWING

Strictly by arrangement with the Agent's Bearsted
Office, 132 Ashford Road, Bearsted, Maidstone, Kent
ME14 4LX . Tel: 01622 739574.

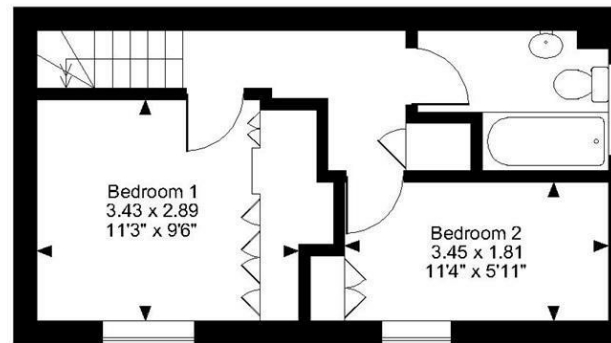
ENERGY PERFORMANCE

The property is exempt from EPC requirements.

Roseacre Lane, Bearsted, Maidstone
Approximate Gross Internal Area
746 Sq Ft/69 Sq M



Ground Floor



First Floor

FOR ILLUSTRATIVE PURPOSES ONLY - NOT TO SCALE

The position & size of doors, windows, appliances and other features are approximate only.
© ehouse. Unauthorised reproduction prohibited. Drawing ref. dig/8595847/SS

