



The Tannery Goddington Lane, Harrietsham, Maidstone, Kent, ME17 1JX
Guide Price £625,000

**** GUIDE PRICE £625,000 - £650,000 **** This impressive barn conversion boasts contemporary living spaces and expansive gardens, located on a tranquil no-through road in the charming village of Harrietsham. Meticulously presented to a high standard, this modern property is a must-see.

Upon entering, the property features an open-plan layout encompassing a bright and airy lounge with skylights and feature log burner, a contemporary kitchen, and dining area. The ground floor also includes a modern wet room/WC. The first floor hosts two bedrooms and a family bathroom, while the second floor is dedicated to the master bedroom.

Nestled on a generous plot spanning almost 1/3 of an acre in a peaceful, secluded setting surrounded by countryside and lakes, this property offers more than ample off-road parking, a single garage, and extra storage space.

Ideally situated close to the amenities of Harrietsham, this location offers access to the nearby train station, which takes you to London and other major destinations whilst junction 8 of the M20 is a couple of minutes drive away. Families will also benefit from the proximity to reputable schools, and a diverse selection of local shops, pubs, and restaurants are nearby. Tenure: Freehold: EPC Rating: C. Council Tax Band: E.



GROUND FLOOR

Sitting Room

Dining Area

Kitchen

Wetroom/WC

FIRST FLOOR

Landing

Bedroom 2

Bedroom 3

Family Bathroom

SECOND FLOOR

Bedroom 1

EXTERNALLY

Single Garage

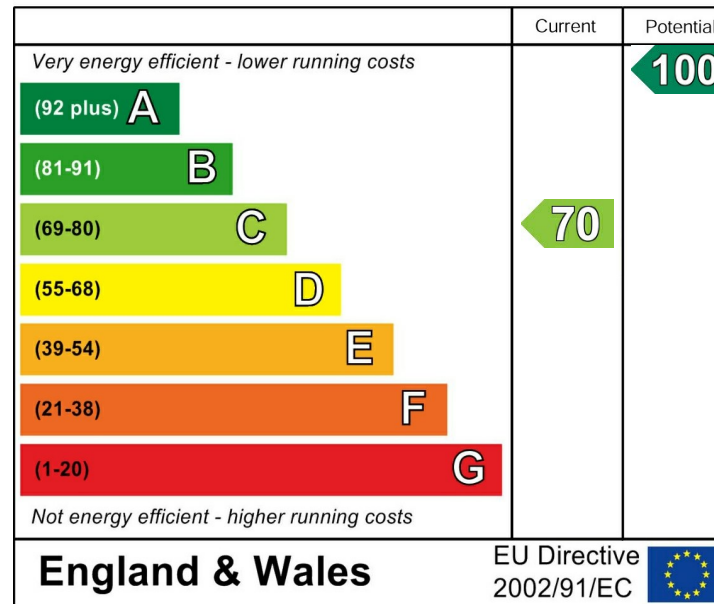
Driveway

Rear Garden

VIEWING

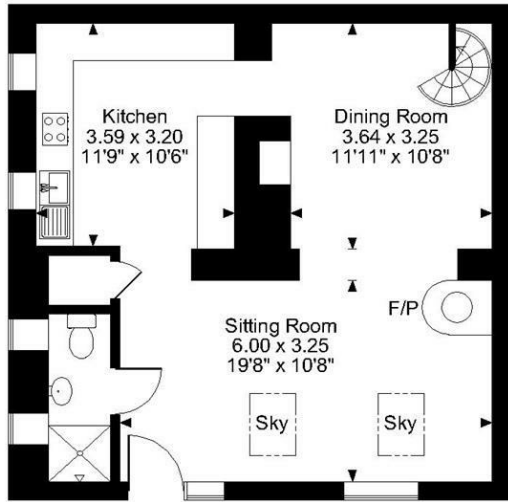
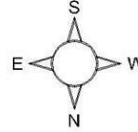
Strictly by arrangement with the Agent's Bearsted
Office: 132 Ashford Road, Bearsted, Maidstone, Kent
ME14 4LX . Tel: 01622 739574.

Energy Efficiency Rating

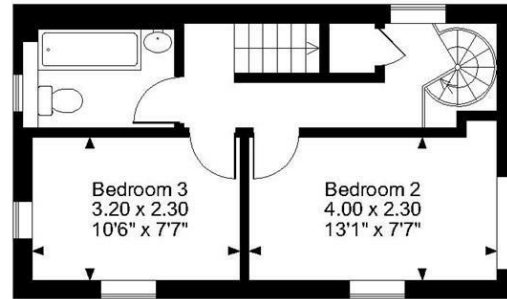


Page & Wells limited for themselves and for the vendors of this property whose agents they are give notice that: 1. These particulars do not constitute any part of, an offer or a contract. 2. All statements contained in these particulars as to this property are made without responsibility on the part of Page & Wells Limited or the Vendor. 3. None of the statements contained in these particulars as to the property is to be relied on as statements or representations of fact. 4. Any intending purchaser must satisfy himself by inspection or otherwise as to the correctness of each of the statements contained in these particulars. 5. The vendor does not make or give, and neither Page & Wells Limited nor any person in their employment has any authority to make or give any representation whatsoever in relation to this property. These particulars are supplied on the understanding that all negotiations are carried out throughout Page & Wells Limited. Properties with a reference prefixes EAA are those which Page & Wells Limited disclose an interest in accordance with the provisions of the Estates Agents Act 1979

Goddington Lane Harrietsham, Maidstone
Approximate Gross Internal Area
Main House = 1069 Sq Ft/99 Sq M
Garage = 237 Sq Ft/22 Sq M
Total = 1306 Sq Ft/121 Sq M



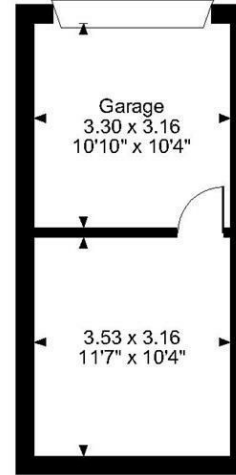
Ground Floor



First Floor



Second Floor



FOR ILLUSTRATIVE PURPOSES ONLY - NOT TO SCALE

The position & size of doors, windows, appliances and other features are approximate only.

© ehouse. Unauthorised reproduction prohibited. Drawing ref. dig/8593003/LCO

