



19 Fullers Close, Bearsted, Maidstone, Kent, ME14 4LJ
Guide Price £450,000

**** GUIDE PRICE £450,000 - £475,000 **** A newly extended and modernised three/four bedroom semi-detached house nestled within a sought-after residential development off The Landway in Bearsted. This prime location is within walking distance of the esteemed Roseacre & Thurnham schools.

Step through the newly constructed entrance porch and into the inviting sitting room, which connects to the study that could also function as a fourth bedroom if desired. The impressive open-plan kitchen/dining room at the rear features a spacious central island with additional storage and USB sockets, as well as bi-fold doors that open to the rear garden. The extension also adds a convenient utility room and a downstairs shower room. Upstairs, you'll find three bedrooms and a newly fitted bathroom. The property has been recently re-wired throughout, offering modern convenience and safety.

Outside, the property boasts a driveway with parking for two vehicles and the potential to create additional parking on the lawned area if desired. The rear garden is thoughtfully landscaped, with a generously sized lawn, a delightful patio seating area, raised beds, and a garden shed.

There are an abundance of local amenities within Bearsted, including excellent transport links via mainline train station and the picturesque Village Green with a selection of pubs and restaurants which are within walking distance. Easy access to the M20 and M2 motorways. Leisure facilities include Bearsted golf, bowls and tennis clubs and nearby leisure centres, whilst the beautiful grounds of both Leeds Castle and Mote Park are also close by. Tenure: Freehold. EPC rating: Awaiting. Council Tax Band: D.



GROUND FLOOR:

Entrance Porch

Entrance Hall

Sitting Room

Study

Dining Area

Kitchen

Utility Room

Shower Room

FIRST FLOOR:

Landing

Principal Bedroom

Bedroom Two

Bedroom Three

Family Bathroom

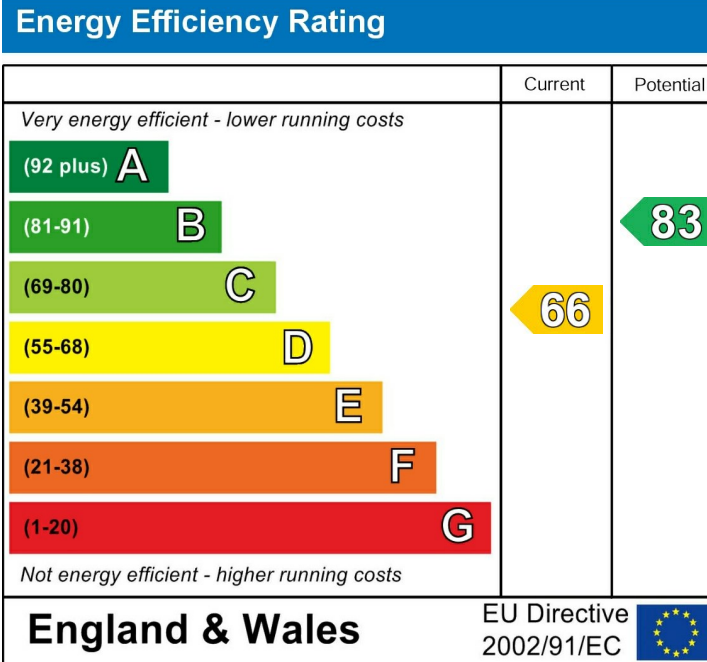
EXTERNALLY:

Driveway

Rear Garden

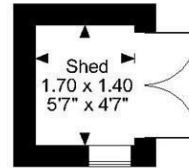
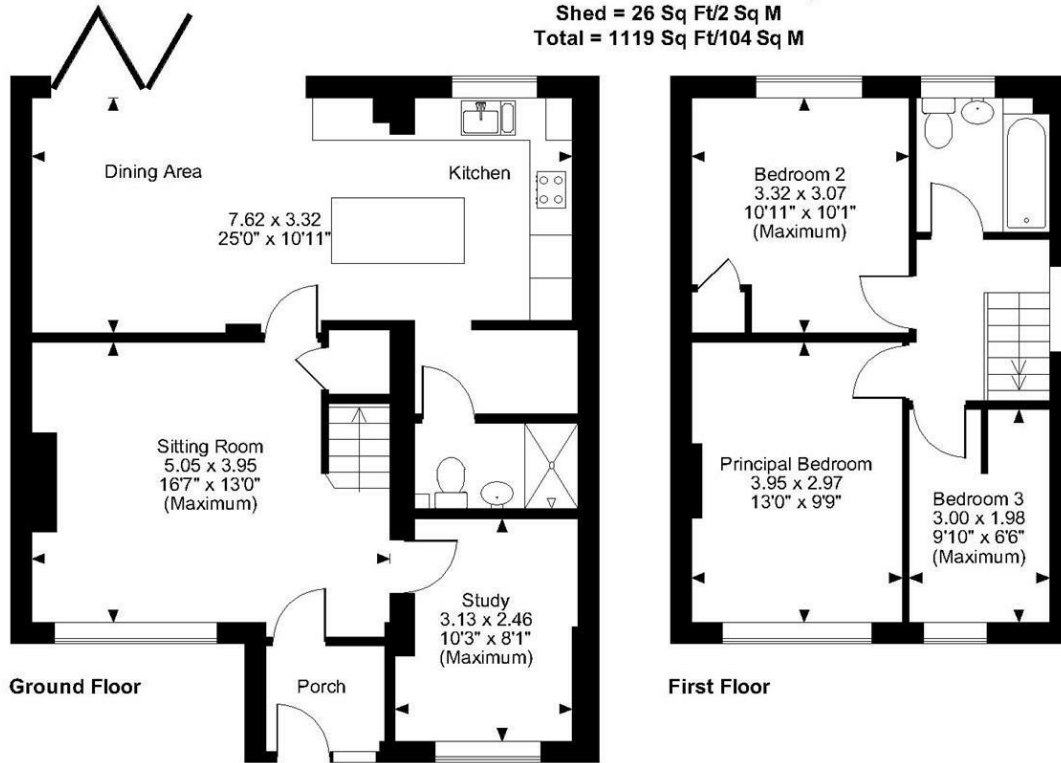
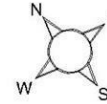
VIEWING

Strictly by arrangement with the Agent's Bearsted Office, 132 Ashford Road, Bearsted, Maidstone, Kent ME14 4LX. Tel: 01622 739574.



Page & Wells limited for themselves and for the vendors of this property whose agents they are give notice that: 1. These particulars do not constitute any part of, an offer or a contract. 2. All statements contained in these particulars as to this property are made without responsibility on the part of Page & Wells Limited or the Vendor. 3. None of the statements contained in these particulars as to the property is to be relied on as statements or representations of fact. 4. Any intending purchaser must satisfy himself by inspection or otherwise as to the correctness of each of the statements contained in these particulars. 5. The vendor does not make or give, and neither Page & Wells Limited nor any person in their employment has any authority to make or give any representation whatsoever in relation to this property. These particulars are supplied on the understanding that all negotiations are carried out throughout Page & Wells Limited. Properties with a reference prefixes EAA are those which Page & Wells Limited disclose an interest in accordance with the provisions of the Estates Agents Act 1979

Fullers Close, Bearsted, Maidstone, Kent
 Approximate Gross Internal Area
 Main House = 1093 Sq Ft/102 Sq M
 Shed = 26 Sq Ft/2 Sq M
 Total = 1119 Sq Ft/104 Sq M



FOR ILLUSTRATIVE PURPOSES ONLY - NOT TO SCALE
 The position & size of doors, windows, appliances and other features are approximate only.
 © ehouse. Unauthorised reproduction prohibited. Drawing ref. dig/8592991/SS

