



**The Oast House, Lewsome Farm Boughton Road, Maidstone, Kent, ME17 2BE  
Offers In The Region Of £990,000**

The Oast House is situated in a lovely rural setting on the outskirts of Sandway. The gardens border Pleasant Farm Woodland which will protect the setting for years and years ahead. There are excellent local amenities available in the village of Lenham, which is a few minutes drive from the property. Wider shopping and educational facilities are available in the county town of Maidstone which is about 9-miles distant. There is convenient access to the M20 motorway at junction 8 and a mainline station in Lenham providing fast London services.

The original Oast House was built in about 1820 and has been converted in more recent years to create a lovely family home with considerable period charm. The Oast itself has mellowed brick, ragstone and timber clad elevations under a tiled roof with a single square kiln. The property stands in lovely private gardens extending to about .67-acre, set within the gardens is a heated swimming pool. Internal inspection of this lovely family home is thoroughly recommended by the sole selling agents.

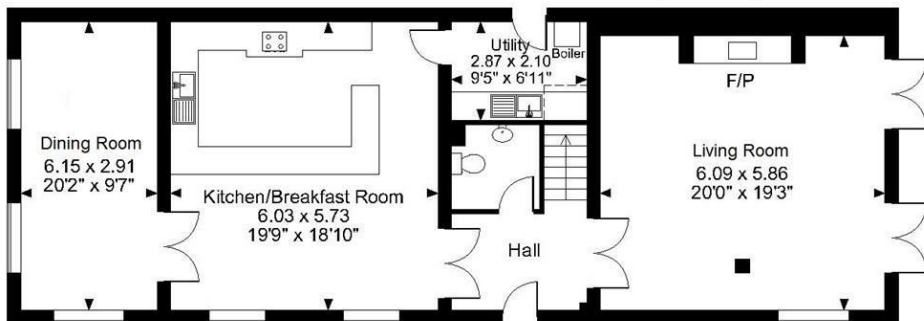
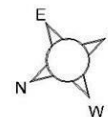
EPC rating: E  
Tenure: freehold





**Lewsome Farm, The Oast House, The Oast House, Boughton Road, Maidstone**

Approximate Gross Internal Area  
 Main House = 2440 Sq Ft/227 Sq M  
 Garage = 318 Sq Ft/30 Sq M  
 Outbuildings = 139 Sq Ft/13 Sq M  
 Total = 2897 Sq Ft/270 Sq M



**Ground Floor**



**First Floor**

**FOR ILLUSTRATIVE PURPOSES ONLY - NOT TO SCALE**

The position & size of doors, windows, appliances and other features are approximate only.

□ Denotes restricted head height

© ehouse. Unauthorised reproduction prohibited. Drawing ref. dig/8587756/SS

