



24 Bodsham Crescent, Bearsted, Maidstone, ME15 8NL
Offers In The Region Of £475,000



**** NO FORWARD CHAIN ** NEWLY RE-DECORATED **** A tranquil and rare to market 3 bedroom detached bungalow situated on a desirable South facing corner plot, on the outskirts of the River Len Nature Reserve. The property has been extended, adding a shower room and WC, and comprises L-shaped sitting/dining room, conservatory, separate kitchen, 2 double bedrooms with a further single/study, a family bathroom and has the benefit of an attached garage to side. Externally, the property is approached by a long driveway with parking for up to 3 vehicles with potential for more, and benefits from a wonderful South facing rear garden which backs onto Woodland and is side on to the nature reserve, separated by a brick wall surrounded by shrubs, bushes and trees.

The property is ideally located to take advantage of local amenities within Bearsted including local shops and doctors surgery. There are excellent transport links via the nearby mainline train station and easy access to the M20 & M2 motorways together with close proximity to the superb Thurnham and Roseacre schools, the picturesque village green with a choice of cafe's, pubs and restaurants. Leisure facilities include golf, bowls and tennis clubs, nearby leisure centres, whilst the beautiful grounds of both Leeds Castle and Mote park are nearby. Council Tax Band: E



INTERNALLY

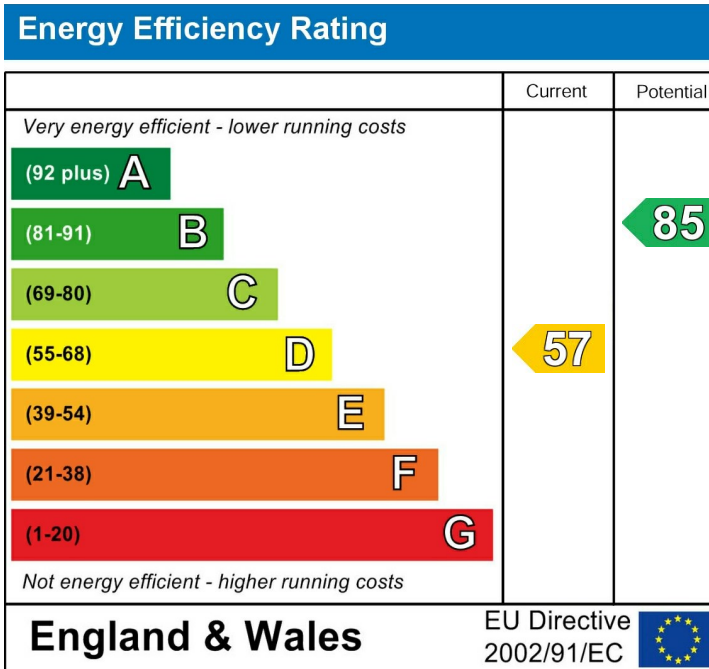
- Entrance Hall
- Sitting/Dining room
- Conservatory
- Shower room
- Kitchen
- Bedroom 1
- Bedroom 2
- Bedroom 3/Study

EXTERNALLY

- Garage
- Gardens

VIEWING

Strictly by arrangement with the Agent's Bearsted Office, 132 Ashford Road, Bearsted, Maidstone, Kent ME14 4LX . Tel: 01622 739574.



Page & Wells limited for themselves and for the vendors of this property whose agents they are give notice that: 1. These particulars do not constitute any part of, an offer or a contract. 2. All statements contained in these particulars as to this property are made without responsibility on the part of Page & Wells Limited or the Vendor. 3. None of the statements contained in these particulars as to the property is to be relied on as statements or representations of fact. 4. Any intending purchaser must satisfy himself by inspection or otherwise as to the correctness of each of the statements contained in these particulars. 5. The vendor does not make or give, and neither Page & Wells Limited nor any person in their employment has any authority to make or give any representation whatsoever in relation to this property. These particulars are supplied on the understanding that all negotiations are carried out throughout Page & Wells Limited. Properties with a reference prefixes EAA are those which Page & Wells Limited disclose an interest in accordance with the provisions of the Estates Agents Act 1979

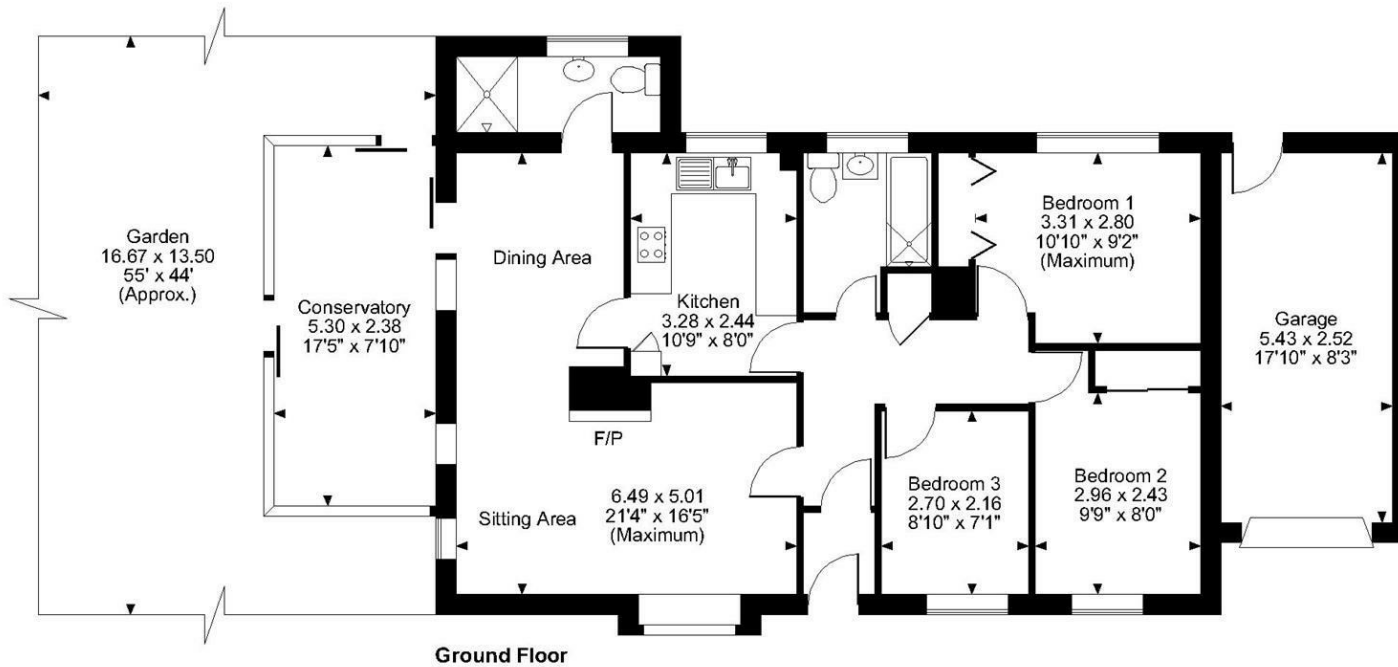
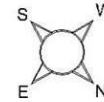
Bodsham Crescent, Bearsted, Maidstone

Approximate Gross Internal Area

Main House = 964 Sq Ft/90 Sq M

Garage = 147 Sq Ft/14 Sq M

Total = 1111 Sq Ft/104 Sq M



FOR ILLUSTRATIVE PURPOSES ONLY - NOT TO SCALE

The position & size of doors, windows, appliances and other features are approximate only.

© ehouse. Unauthorised reproduction prohibited. Drawing ref. dig/8556082/TOW

