



4 Willow Close, Harrietsham, Maidstone, ME17 1EZ
Guide Price £425,000

**** GUIDE PRICE: £425,000 - £450,000 ** HIGH-END SPECIFICATION ****

Welcome to this stunning property, ideally situated in the centre of Harrietsham, offering the perfect blend of modern living and convenience. Boasting a spacious and contemporary design, this modern built house is nestled in a small cul-de-sac, close to all the local amenities.

Step inside to discover a home that exudes elegance, with a beautifully modernised interior finished to a very high standard, the property presents a stylish and comfortable living space comprising large sitting/dining area leading to a modern conservatory, contemporary fully fitted kitchen with NEFF integrated appliances and Corian worktops, and a downstairs cloakroom completes the ground floor. Upstairs, you will find two double bedrooms, the principal benefiting from a luxurious en-suite shower room, plus two further bedrooms and a stunning family bathroom.

Externally, the property benefits from a meticulously maintained rear garden with greenhouse, shed, side access to the garage and beautifully maintained flower beds. There is ample parking for at least one vehicle alongside the shingle front garden, leading to the detached garage. Tenure: Freehold. EPC Rating: C. Council Tax Band: D.



LOCATION

Ideally situated near the amenities of Harrietsham, this location offers easy access to the nearby train station, facilitating easy access to London and other major destinations. Families will also benefit from the proximity to reputable schools. Additionally, a diverse selection of local shops, pubs, and restaurants provide convenience for everyday essentials.

ACCOMMODATION

Ground Floor:

Entrance Hall

Sitting/Dining Room

Conservatory

Kitchen

Cloakroom

First Floor:

Landing

Bedroom One

En-suite Shower Room

Bedroom Two

Bedroom Three

Bedroom Four

Family Bathroom

EXTERNALLY

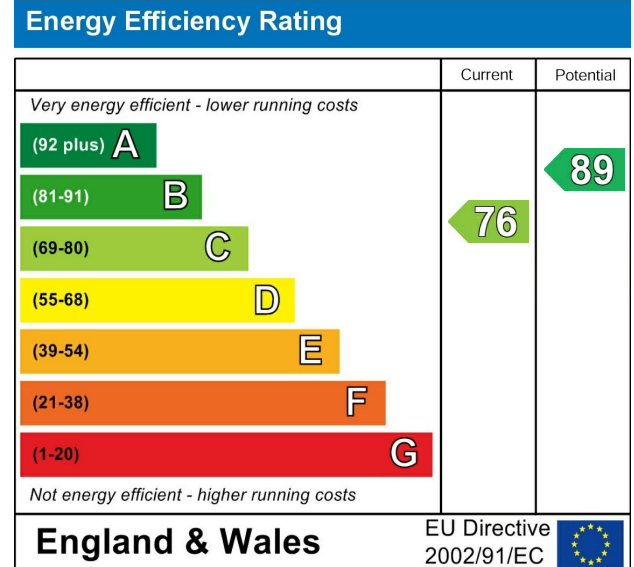
Rear Garden

Detached Garage

Driveway

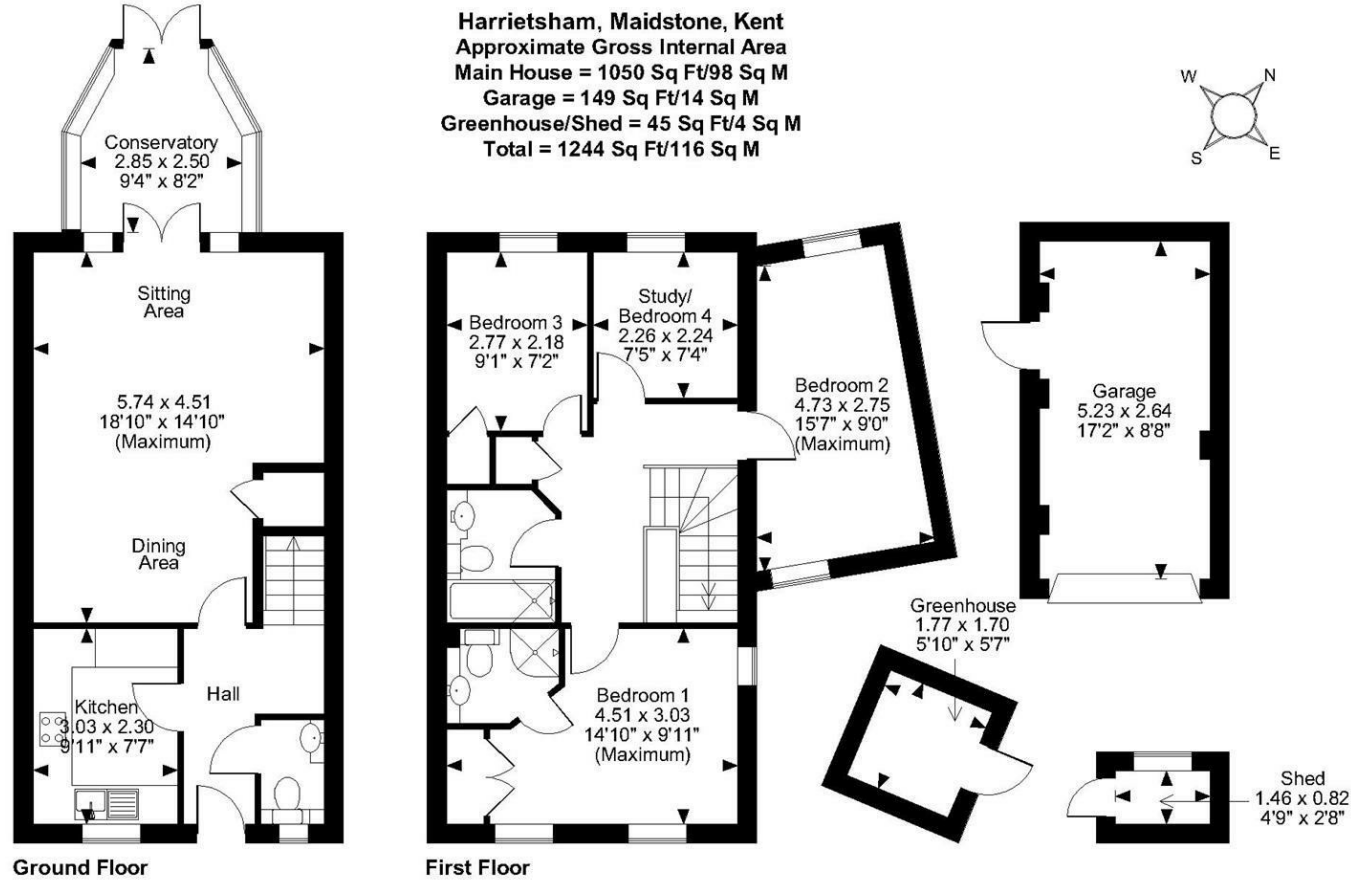
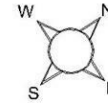
VIEWING

Strictly by arrangement with the Agent's Bearsted Office, 132 Ashford Road, Bearsted, Maidstone, Kent ME14 4LX . Tel: 01622 739574.



Page & Wells limited for themselves and for the vendors of this property whose agents they are give notice that: 1. These particulars do not constitute any part of, an offer or a contract. 2. All statements contained in these particulars as to this property are made without responsibility on the part of Page & Wells Limited or the Vendor. 3. None of the statements contained in these particulars as to the property is to be relied on as statements or representations of fact. 4. Any intending purchaser must satisfy himself by inspection or otherwise as to the correctness of each of the statements contained in these particulars. 5. The vendor does not make or give, and neither Page & Wells Limited nor any person in their employment has any authority to make or give any representation whatsoever in relation to this property. These particulars are supplied on the understanding that all negotiations are carried out throughout Page & Wells Limited. Properties with a reference prefixes EAA are those which Page & Wells Limited disclose an interest in accordance with the provisions of the Estates Agents Act 1979

Harrietsham, Maidstone, Kent
Approximate Gross Internal Area
Main House = 1050 Sq Ft/98 Sq M
Garage = 149 Sq Ft/14 Sq M
Greenhouse/Shed = 45 Sq Ft/4 Sq M
Total = 1244 Sq Ft/116 Sq M



FOR ILLUSTRATIVE PURPOSES ONLY - NOT TO SCALE

The position & size of doors, windows, appliances and other features are approximate only.

© ehouse. Unauthorised reproduction prohibited. Drawing ref. dig/8589744/SS

