



**5 Cricketers Close, Harrietsham, Maidstone, ME17 1JQ**  
**Guide Price £525,000**



**\*\* GUIDE PRICE £525,000 - £550,000 \*\* NEARLY 1,400 SQ FT \*\*** An impressively extended and beautifully modernised 4 bedroom, 2 bathroom link-detached family home boasting expansive living accommodation.

The ground floor comprises Entrance Hall with downstairs Cloakroom, Sitting Room, large Family Room with french doors out to the rear garden, modern fitted Kitchen, Dining Room, and separate Utility. Upstairs boasts a Principal Bedroom with large Luxurious En-Suite Shower Room, 3 further Bedrooms, and a family Bathroom.

Externally, the property has off-street parking for a couple of vehicles to the front, whilst the rear garden is half laid to lawn and half paved with the addition of a shed.

The property is ideally situated close to the centre of Harrietsham providing easy access to amenities including a primary school, church, shops, and a gastro pub, whilst the mainline station offering easy access to London Victoria & regular bus service, are both just a short walk away. Access to the M20 motorway and the larger villages of Bearsted and Lenham are all within a few miles. Tenure: Freehold. EPC Rating: C. Council Tax Band: E.



**GROUND FLOOR:**

Entrance Hall

Cloakroom

Sitting Room

Family Room

Dining Room

Kitchen

Utility Room

**FIRST FLOOR:**

Landing

Principal Bedroom

Shower Room En-suite

Bedroom Two

Bedroom Three

Bedroom Four

Family Bathroom

**EXTERNALLY:**

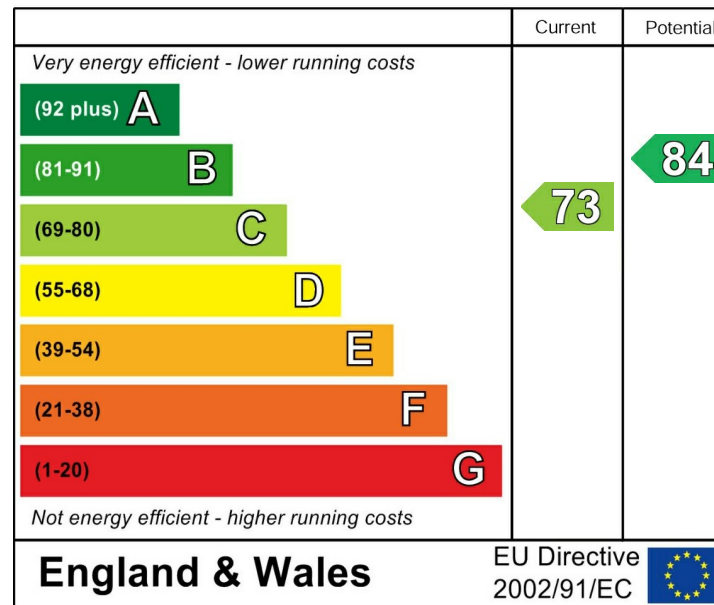
Driveway

**Rear Garden**

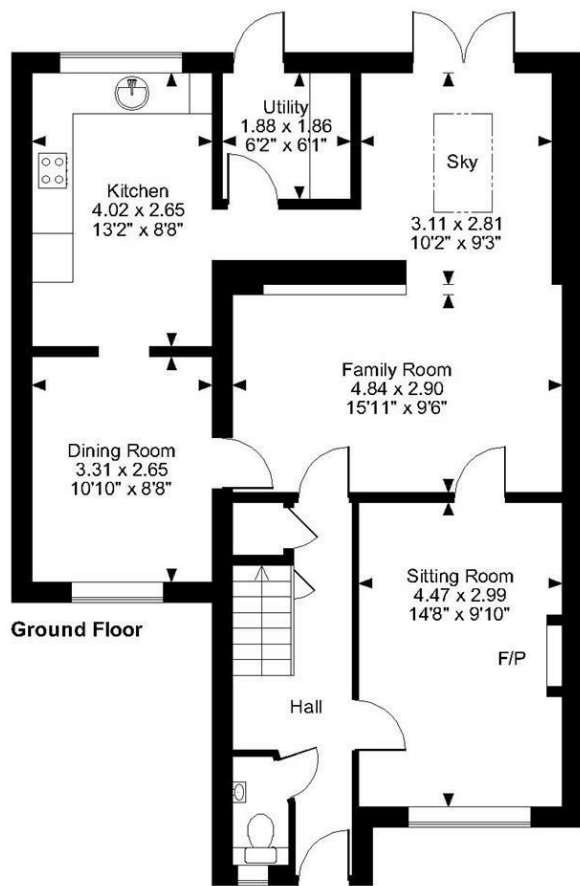
**VIEWING:**

Strictly by arrangement with the Agent's Bearsted  
Office: 132 Ashford Road, Bearsted, Maidstone, Kent  
ME14 4LX. Tel: 01622 739574.

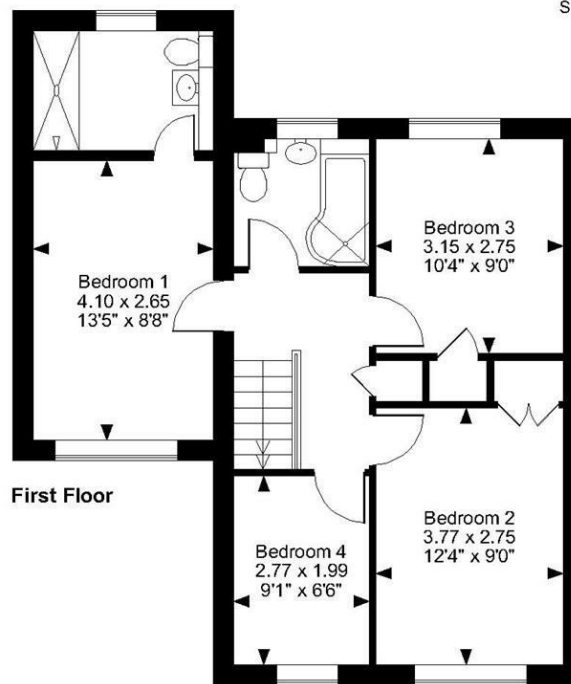
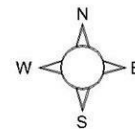
**Energy Efficiency Rating**



Page & Wells limited for themselves and for the vendors of this property whose agents they are give notice that: 1. These particulars do not constitute any part of, an offer or a contract. 2. All statements contained in these particulars as to this property are made without responsibility on the part of Page & Wells Limited or the Vendor. 3. None of the statements contained in these particulars as to the property is to be relied on as statements or representations of fact. 4. Any intending purchaser must satisfy himself by inspection or otherwise as to the correctness of each of the statements contained in these particulars. 5. The vendor does not make or give, and neither Page & Wells Limited nor any person in their employment has any authority to make or give any representation whatsoever in relation to this property. These particulars are supplied on the understanding that all negotiations are carried out throughout Page & Wells Limited. Properties with a reference prefixes EAA are those which Page & Wells Limited disclose an interest in accordance with the provisions of the Estates Agents Act 1979



**Cricketers Close, Harrietsham, Maidstone**  
**Approximate Gross Internal Area**  
**1394 Sq Ft/129 Sq M**



**FOR ILLUSTRATIVE PURPOSES ONLY - NOT TO SCALE**

The position & size of doors, windows, appliances and other features are approximate only.  
 © ehouse. Unauthorised reproduction prohibited. Drawing ref. dig/8584772/TOW

