



**Bassetts Ashford Road, Harrietsham, Maidstone, ME17 1JR**  
**Guide Price £425,000**





**\*\* GUIDE PRICE: £425,000 - £450,000 \*\* NO FORWARD CHAIN \*\*** This 3 bedroom, 2 bathroom detached bungalow situated within the desirable village of Harrietsham, on the outskirts of Maidstone is set well back from the Ashford Road and is within walking distance of all local amenities.

Upon entry, you will find an inviting entrance lobby with built in storage cupboard leading to the dining room and sitting room, a generous kitchen which overlooks the rear garden, leading to a large utility room, three bedrooms (one currently utilised as a home office), a family bathroom and a separate shower room with door leading to the internal garage.

Outside, the property features a generous driveway with potential for expansion due to the large shingle front garden, while the rear boasts a beautifully landscaped, well-established private garden with a patio seating area, ideal for entertaining. Additionally, a summer house provides an added bonus to this charming property.

The property is well located close to the centre of Harrietsham providing easy access to amenities including a primary school, church, shops, and a gastro pub, whilst the mainline station offering easy access to London Victoria & regular bus service, are both just a short walk away. Access to the M20 motorway and the larger villages of Bearsted and Lenham are all within a few miles. Tenure: Freehold. EPC Rating: E. Council Tax Band: E.



**INTERNALLY**

**Entrance Porch**

**Dining Room**

**Sitting Room**

**Shower Room**

**Kitchen**

**Utility Room**

**Bedroom 1**

**Bedroom 2**

**Study/Bedroom 3**

**Bathroom**

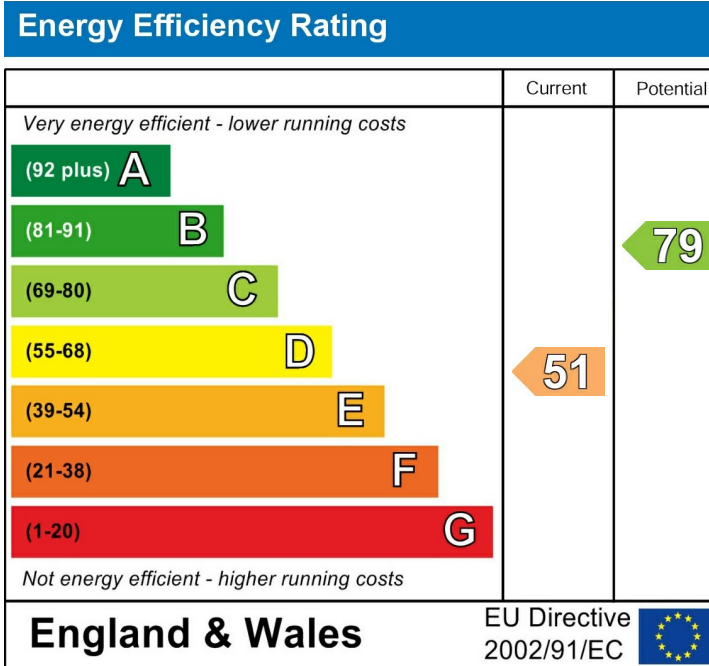
**EXTERNALLY**

**Driveway**

**Garden**

**VIEWING**

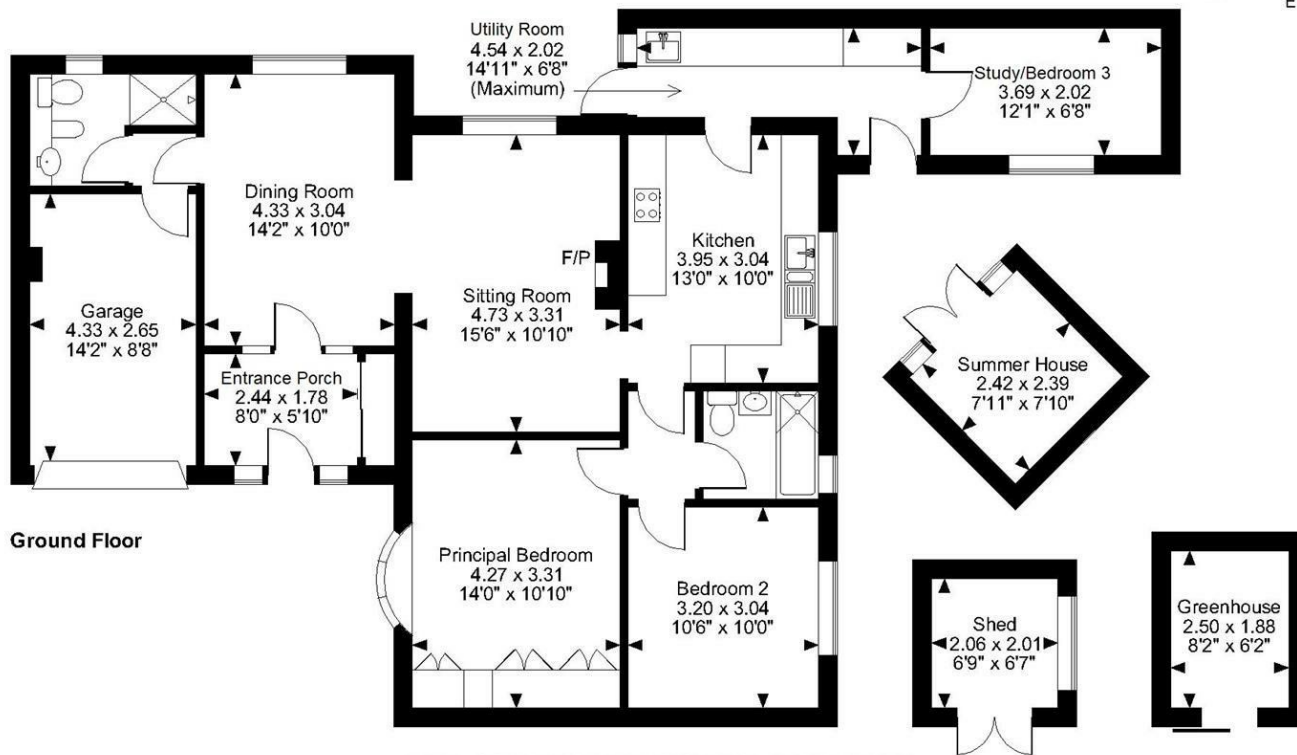
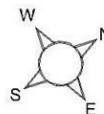
Strictly by arrangement with the Agent's Bearsted  
Office: 132 Ashford Road, Bearsted, Maidstone, Kent  
ME14 4LX. Tel: 01622 739574.



Page & Wells limited for themselves and for the vendors of this property whose agents they are give notice that: 1. These particulars do not constitute any part of, an offer or a contract. 2. All statements contained in these particulars as to this property are made without responsibility on the part of Page & Wells Limited or the Vendor. 3. None of the statements contained in these particulars as to the property is to be relied on as statements or representations of fact. 4. Any intending purchaser must satisfy himself by inspection or otherwise as to the correctness of each of the statements contained in these particulars. 5. The vendor does not make or give, and neither Page & Wells Limited nor any person in their employment has any authority to make or give any representation whatsoever in relation to this property. These particulars are supplied on the understanding that all negotiations are carried out throughout Page & Wells Limited. Properties with a reference prefixes EAA are those which Page & Wells Limited disclose an interest in accordance with the provisions of the Estates Agents Act 1979



**Ashford Road, Harrietsham, Maidstone**  
**Approximate Gross Internal Area**  
**Main House = 1082 Sq Ft/101 Sq M**  
**Garage = 124 Sq Ft/11 Sq M**  
**Shed, Greenhouse & Summer House = 158 Sq Ft/15 Sq M**  
**Total = 1364 Sq Ft/127 Sq M**



**Ground Floor**

**FOR ILLUSTRATIVE PURPOSES ONLY - NOT TO SCALE**

The position & size of doors, windows, appliances and other features are approximate only.  
 © ehouse. Unauthorised reproduction prohibited. Drawing ref. dig/8583265/SS

