



**13 Danefield Court Church Lane, Bearsted, Maidstone, ME14 4EF**  
**Offers In The Region Of £180,000**



A fabulous first floor retirement apartment (over 55's) within an esteemed development off one of the most popular roads in Bearsted, just a short walk from the Village Green.

The property benefits from being at the rear of the development, overlooking the well-maintained residents gardens, and comprises a spacious entrance hall leading to the generous living room, modern kitchen, large bedroom and a shower room. Benefits include a brand new water heater and modern UPVC double glazed windows.

Situated within Bearsted, which is a picturesque village with a central green surrounded by local amenities, including shops, pubs, cafe's and restaurants. The property is just a short walk from Bearsted station offering easy access into London whilst the M20 motorway is also close by. Leisure facilities include Bearsted golf, bowls and tennis clubs, and the beautiful Woodland Trust is a stone's throw away. Tenure: Leasehold with share of Freehold. EPC Rating: D. Council Tax Band: B.



**ACCOMMODATION**

**Entrance Hall**

**Living Room**

**Kitchen**

**Bedroom**

**Shower Room**

**EXTERNALLY**

**Communal Gardens**

**Parking**

**OTHER INFORMATION:**

**Leasehold Details**

The property is leasehold with a share of the freehold.

Lease Term: 185 years

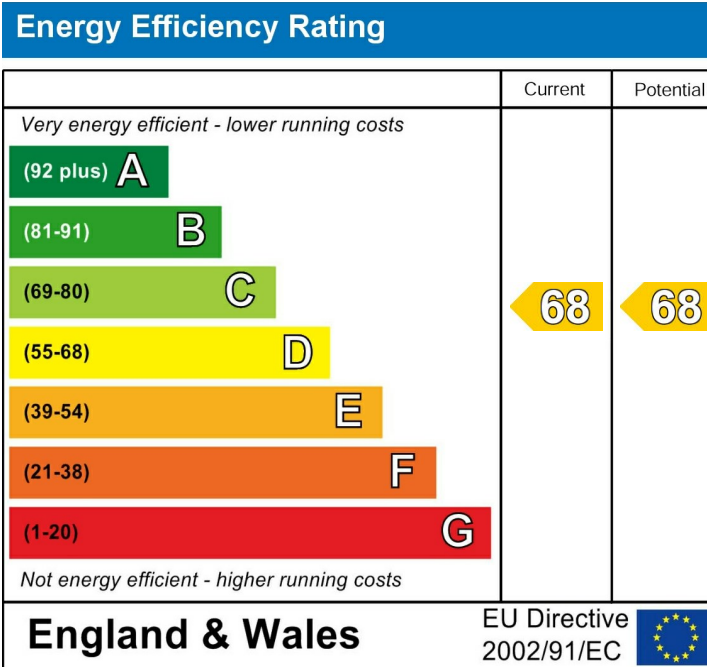
Years Remaining: 146

**Charges**

The annual service charge and ground rent is approximately £1,700.00.

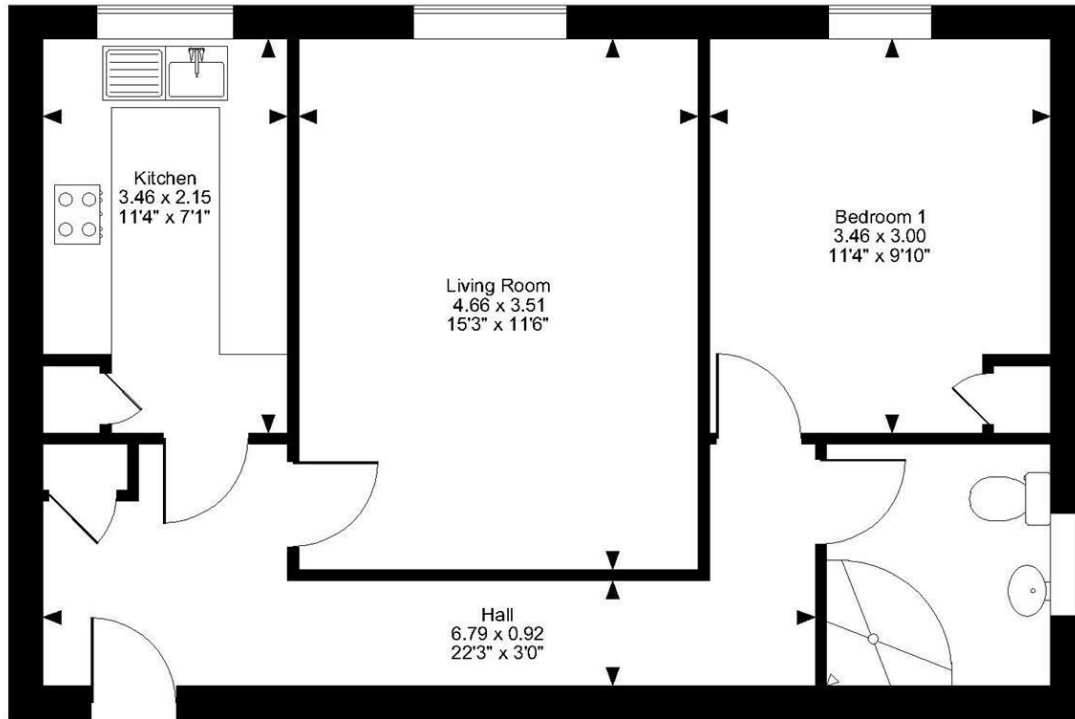
**VIEWING**

Strictly by arrangement with the Agent's Bearsted Office, 132 Ashford Road, Bearsted, Maidstone, Kent ME14 4LX. Tel: 01622 739574.



Page & Wells limited for themselves and for the vendors of this property whose agents they are give notice that: 1. These particulars do not constitute any part of, an offer or a contract. 2. All statements contained in these particulars as to this property are made without responsibility on the part of Page & Wells Limited or the Vendor. 3. None of the statements contained in these particulars as to the property is to be relied on as statements or representations of fact. 4. Any intending purchaser must satisfy himself by inspection or otherwise as to the correctness of each of the statements contained in these particulars. 5. The vendor does not make or give, and neither Page & Wells Limited nor any person in their employment has any authority to make or give any representation whatsoever in relation to this property. These particulars are supplied on the understanding that all negotiations are carried out throughout Page & Wells Limited. Properties with a reference prefixes EAA are those which Page & Wells Limited disclose an interest in accordance with the provisions of the Estates Agents Act 1979

**Church Lane Bearsted, Maidstone**  
Approximate Gross Internal Area  
474 Sq Ft/44 Sq M



**First Floor**

**FOR ILLUSTRATIVE PURPOSES ONLY - NOT TO SCALE**

The position & size of doors, windows, appliances and other features are approximate only.  
© ehouse. Unauthorised reproduction prohibited. Drawing ref. dig/8581048/TOW

