



Pen Dean Weaving Street, Weaving, Maidstone, Kent, ME14 5JP
Guide Price £450,000



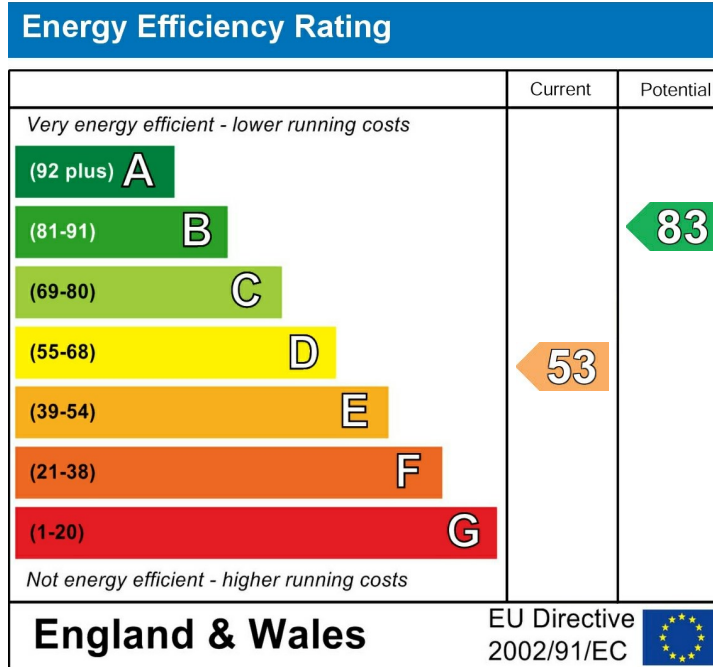
**** GUIDE PRICE £450,000 - £475,000 **** An impressively extended 3 bedroom semi-detached house situated on Weaving Street, boasting a large open-plan Kitchen/Dining room/Family room with vaulted ceiling, bi-fold doors, underfloor heating, and cosy log burner. The ground floor also benefits from a Sitting room with log burner and a modern Shower room. Upstairs, there are 3 Bedrooms and a family Bathroom.

Externally, the property is approached via a driveway with space for 2+ vehicles that runs alongside the front garden which is mainly laid to lawn with shrub borders, whilst the rear garden is approximately 100ft in length with shrub and hedge lined boundaries, large patio seating areas, lawn, greenhouse, and sheds.

The popular area of Weaving benefits from being close to the reputable St Johns primary school, large supermarket, and local pubs. The picturesque village centre of Bearsted is close by where there is an attractive Green, several shops, pubs, restaurants, parish church and mainline station serving London, Ashford International and the coast. The area is also well served by superb motorway links with the M2 & M20 close by. Tenure: Freehold. Council Tax Band: D. EPC Rating: E.



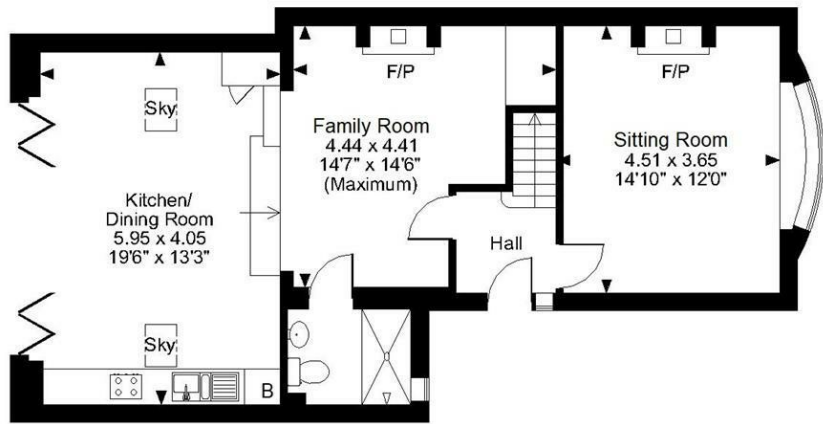
- Ground floor
- Entrance Hall
- Sitting Room
- Family Room
- Kitchen/Dining Room
- Shower Room
- First Floor
- Bedroom 1
- Bedroom 2
- Bedroom 3
- Bathroom
- Externally
- Front Garden
- Rear Garden



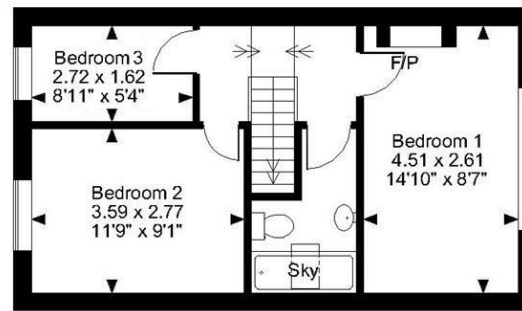
Viewing
Strictly by arrangement with the Agent's Bearsted
Office: 132 Ashford Road, Bearsted, Maidstone, Kent
ME14 4LX. Tel: 01622 739574.

Page & Wells limited for themselves and for the vendors of this property whose agents they are give notice that: 1. These particulars do not constitute any part of, an offer or a contract. 2. All statements contained in these particulars as to this property are made without responsibility on the part of Page & Wells Limited or the Vendor. 3. None of the statements contained in these particulars as to the property is to be relied on as statements or representations of fact. 4. Any intending purchaser must satisfy himself by inspection or otherwise as to the correctness of each of the statements contained in these particulars. 5. The vendor does not make or give, and neither Page & Wells Limited nor any person in their employment has any authority to make or give any representation whatsoever in relation to this property. These particulars are supplied on the understanding that all negotiations are carried out throughout Page & Wells Limited. Properties with a reference prefixes EAA are those which Page & Wells Limited disclose an interest in accordance with the provisions of the Estates Agents Act 1979

Weaving Street, Weaving, Maidstone
Approximate Gross Internal Area
1110 Sq Ft/103 Sq M



Ground Floor



First Floor

FOR ILLUSTRATIVE PURPOSES ONLY - NOT TO SCALE

The position & size of doors, windows, appliances and other features are approximate only.
© ehouse. Unauthorised reproduction prohibited. Drawing ref. dig/8576983/SLU

